

適

情

錄

通雅
卷九

外篇

永嘉林

應龍著

要遮部一

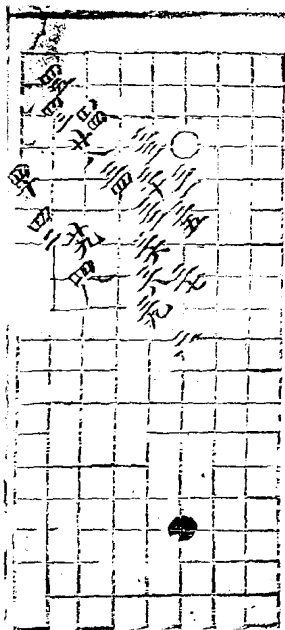
要遮部二

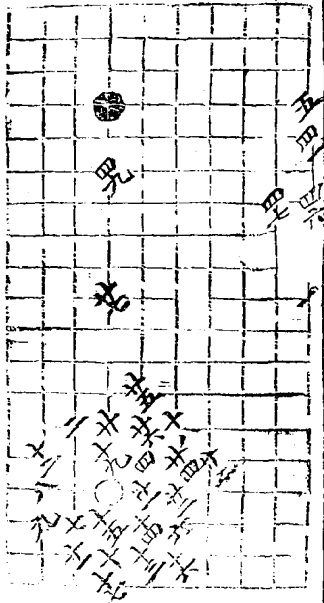
背擊部一

背擊部二

要遮部一

凡十局以下起於一主先舉威如吉
第一局四十九舉



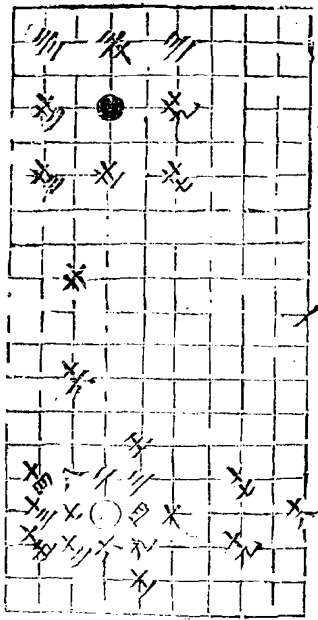


第二局六十舉

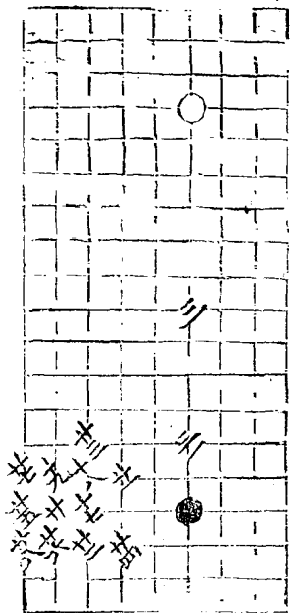


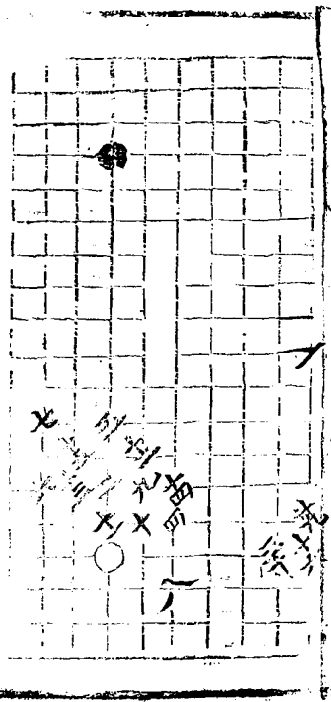
卷之三

四

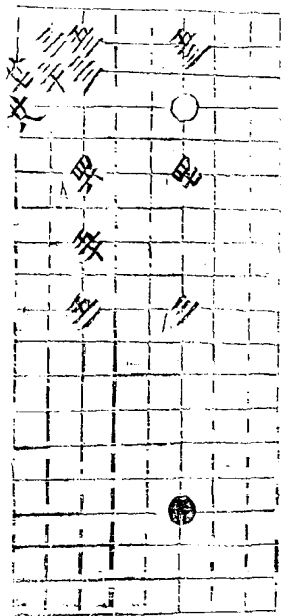


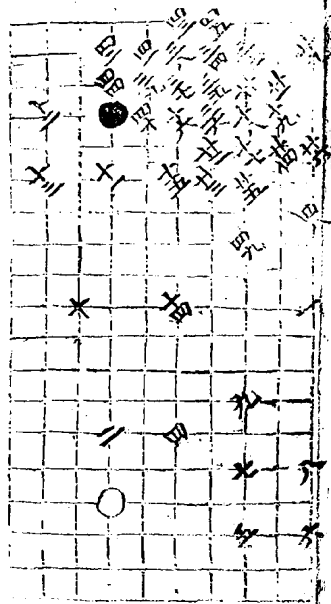
第三局三十一變



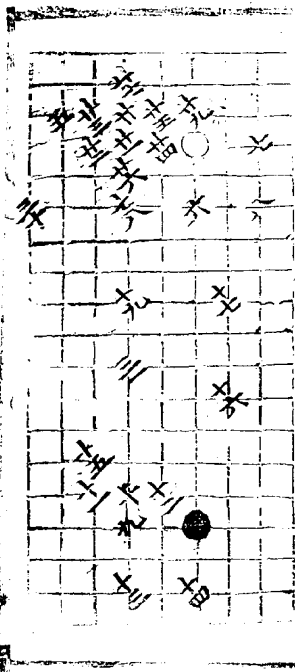


第四局五十三舉

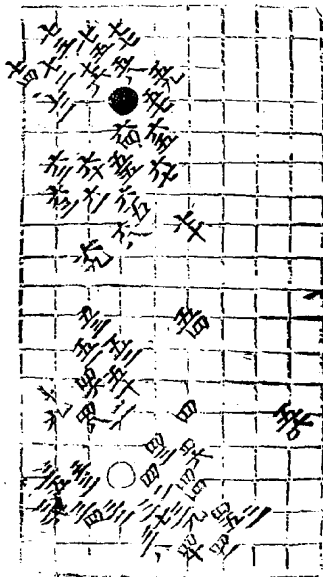




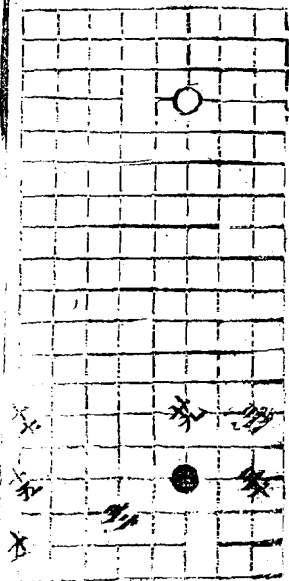
第五局七十七舉



廿八同世

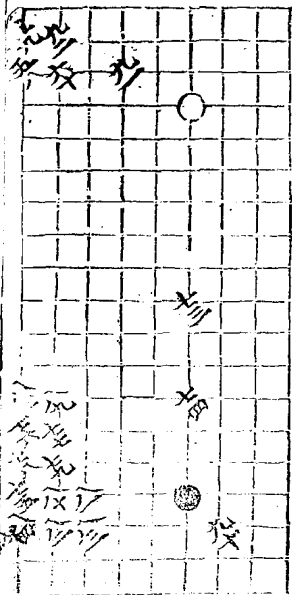


第六局五十三舉

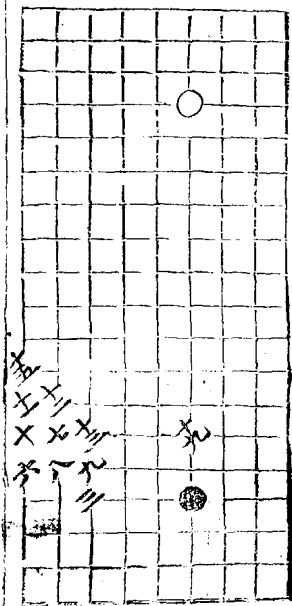




第七局九十二舉

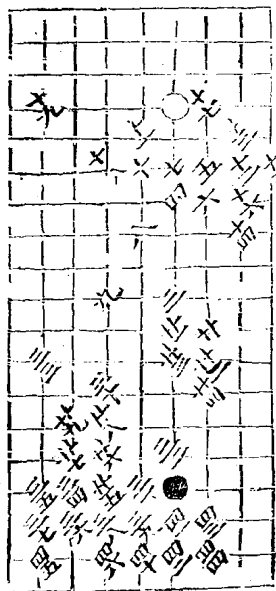


第八局十九舉





第九局四十七舉

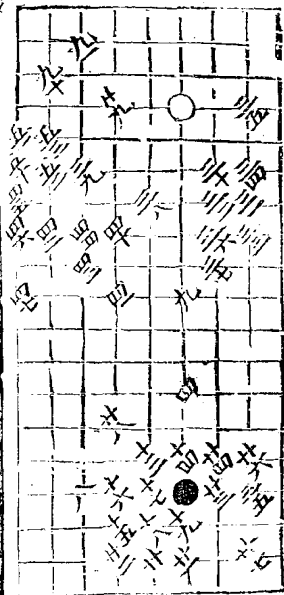




通九

十

第十局九十一舉

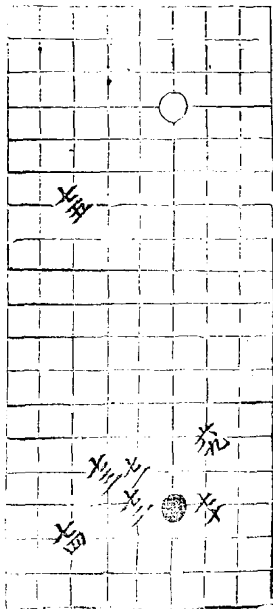


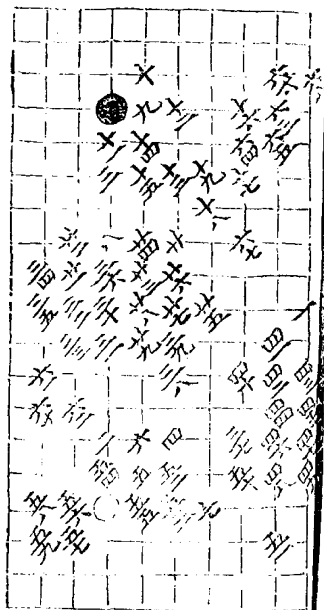


要遮部二

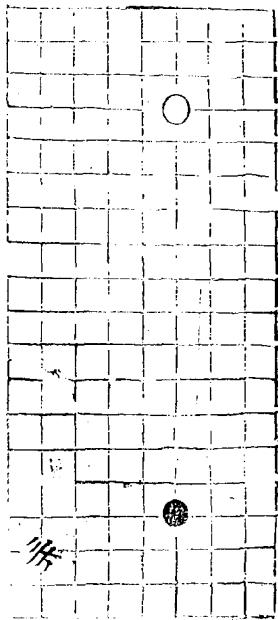
以下各五局

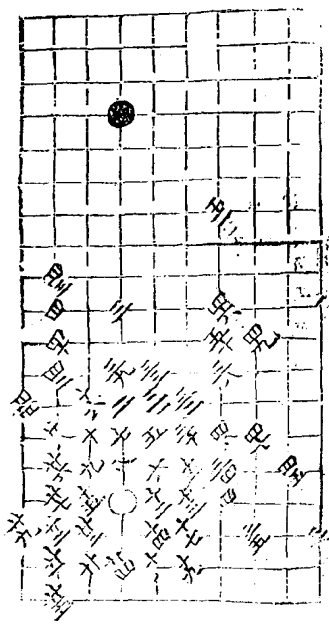
第一局七十五舉



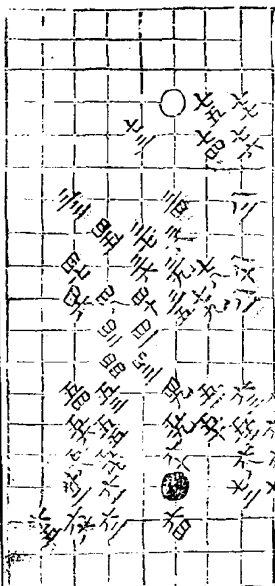


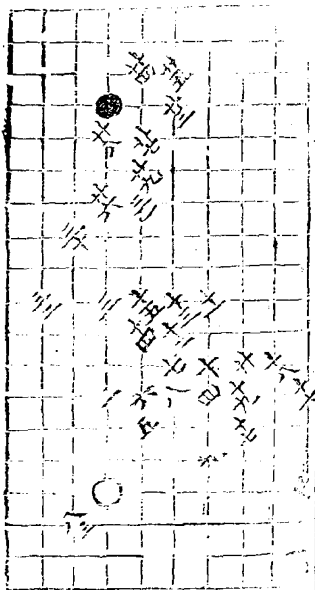
第二局五十一舉



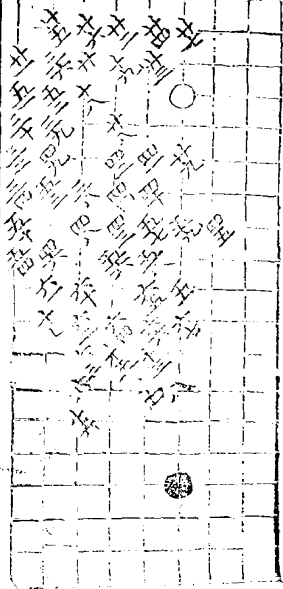


第三局八十三舉





第四局六十七舉



第五局一百八舉

道

十五



拾

九

八

七

六

五

四

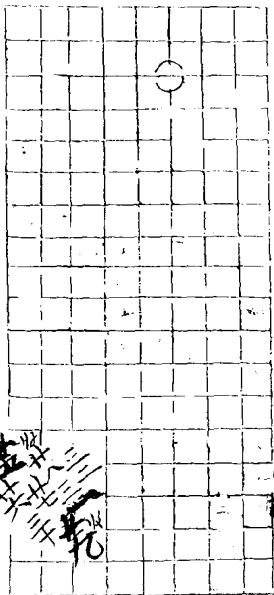
三

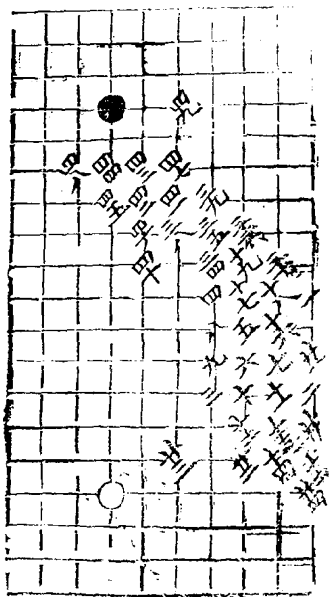
二

一

背擊部一

第一局四十九舉



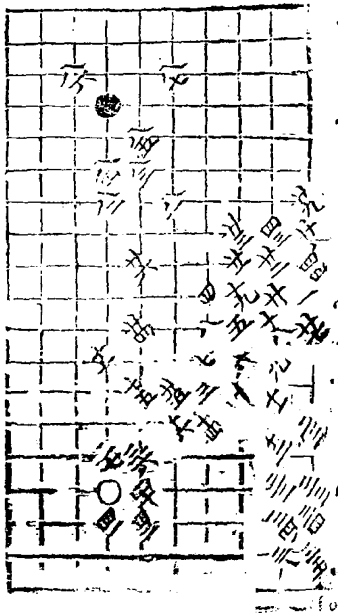


九

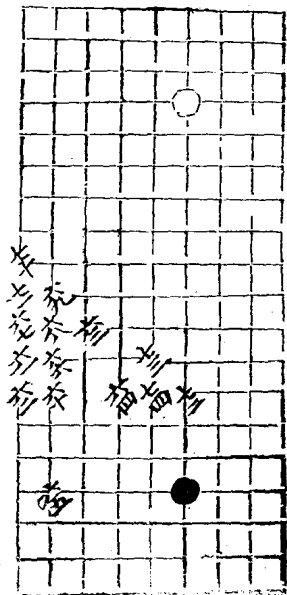
九

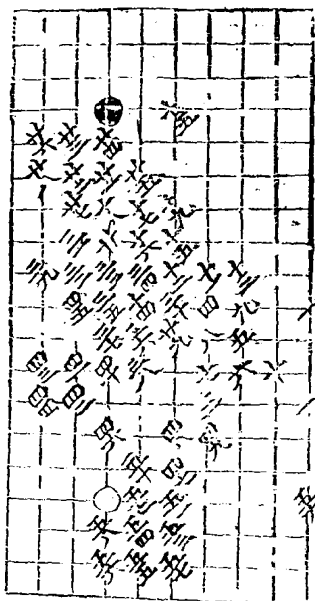
第二局八十七舉



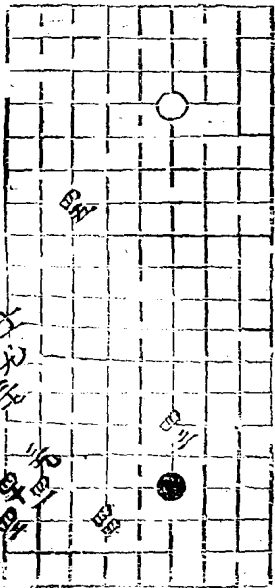


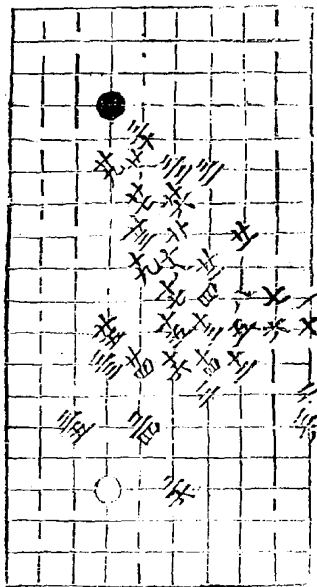
第三局七十五舉



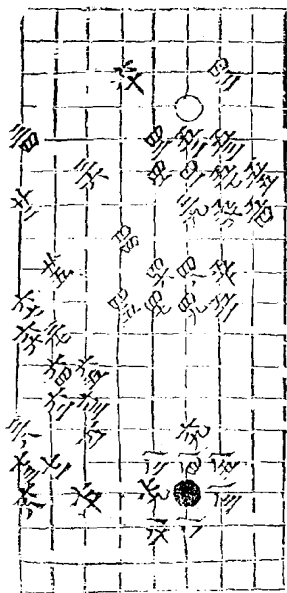


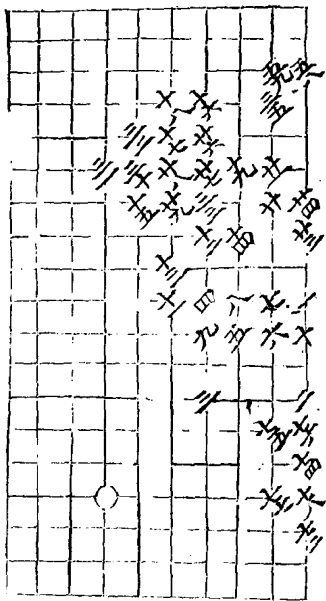
第四局四十五舉





第五局八十五舉



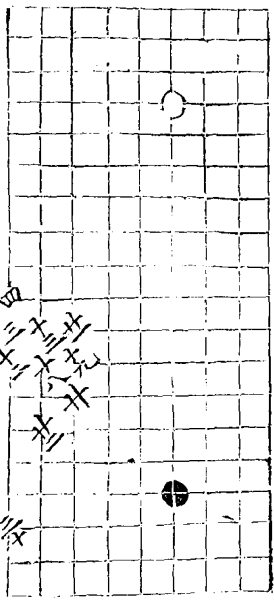


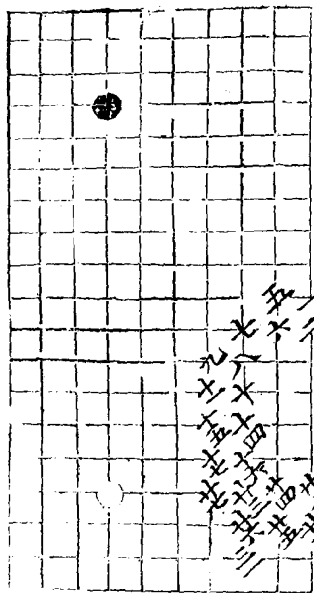
四

十

背擊部二

第一局三十一舉

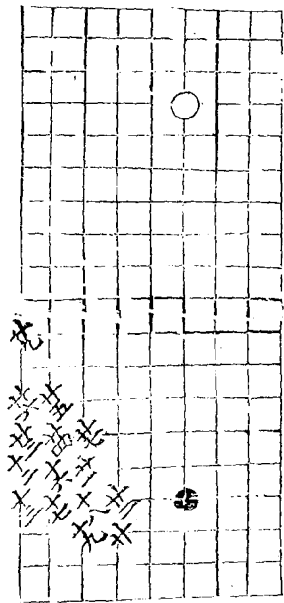




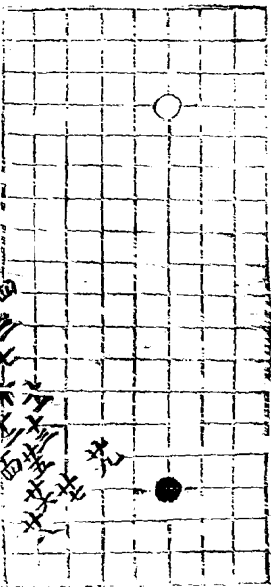
適九

二十三

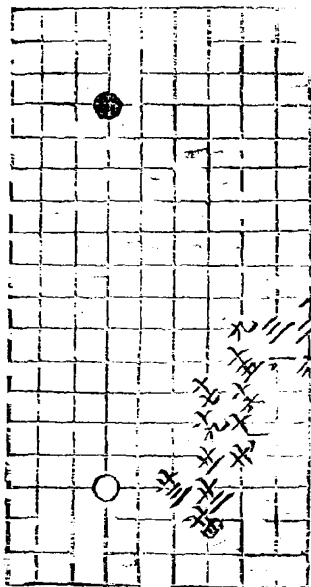
第二局以下各二十局舉



第三局

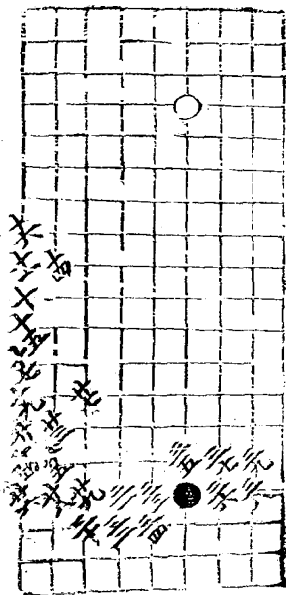


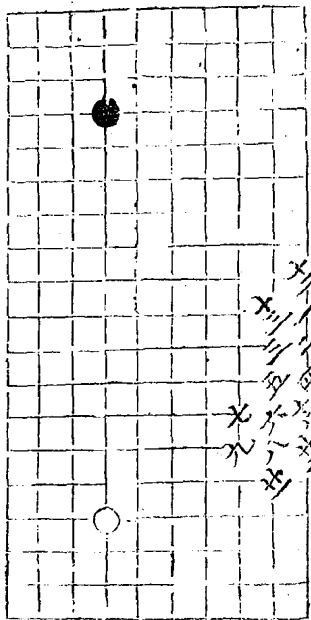
四
三
二
一
六
五
四
三
二
一
九
八
七
六
五
四
三
二
一



10

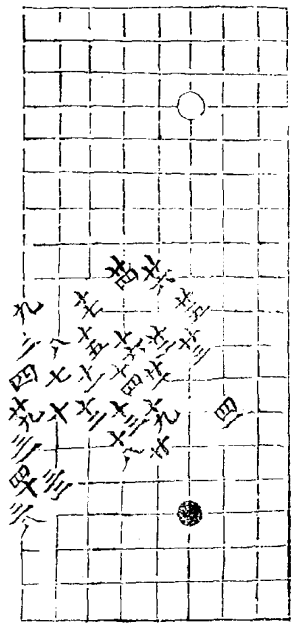
第四局三十九舉

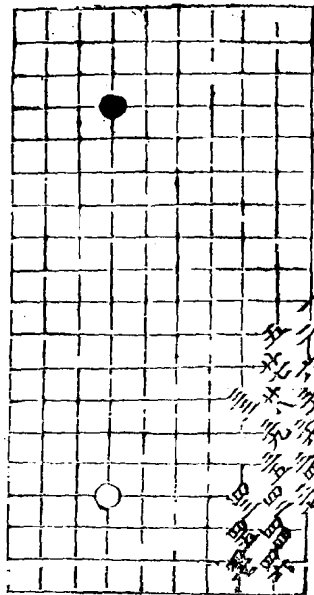




天
地
人
道
大
學
第
一
章
第
一
節

第五局四十七舉





通乙

二五

適情錄第十卷

補遺一

永嘉林 應龍

正兵部一

正兵部二

守城部上一

守城部上二

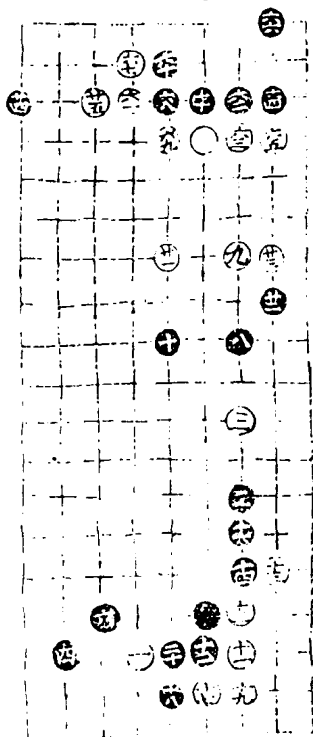
守城部上三

守城部上四

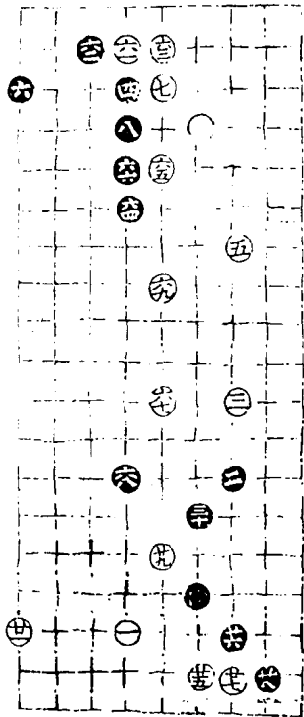
守城部上五

守城部上六

第二局七十四舉



第三局六十九舉



庚

辛

壬

癸

甲

乙

丙

丁

戊

己

庚

辛

壬

癸

甲

乙

丙

丁

戊

己

庚

辛

壬

癸

甲

乙

丙

丁

戊

己

庚

辛

壬

癸

甲

乙

丙

丁

戊

己

庚

辛

壬

癸

甲

乙

丙

丁

戊

己

庚

辛

壬

癸

甲

乙

丙

丁

戊

己

庚

辛

壬

癸

甲

乙

丙

丁

戊

己

庚

辛

壬

癸

甲

乙

丙

丁

戊

己

庚

辛

壬

癸

甲

乙

丙

丁

戊

己

庚

辛

壬

癸

甲

乙

丙

丁

戊

己

庚

辛

壬

癸

甲

乙

丙

丁

戊

己

庚

辛

壬

癸

甲

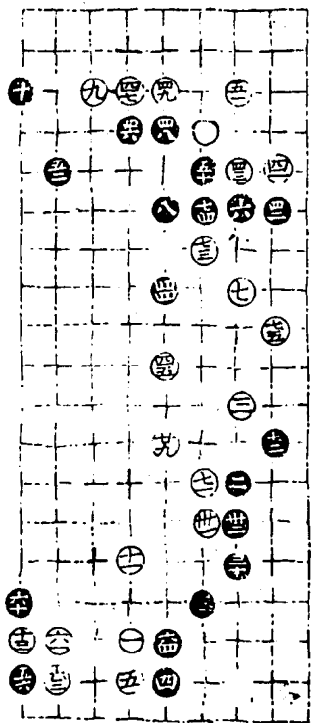
乙

丙

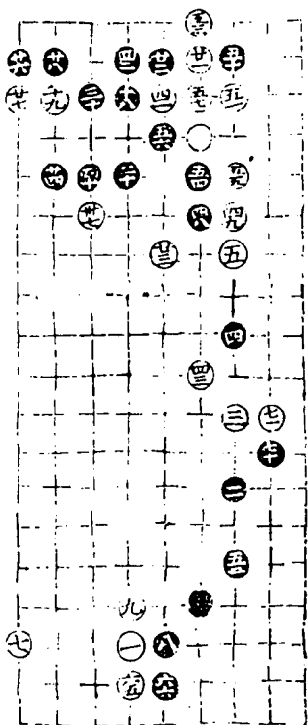
丁

戊

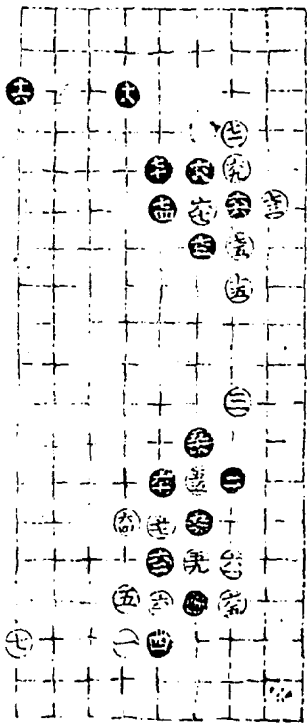
第四局七十九舉

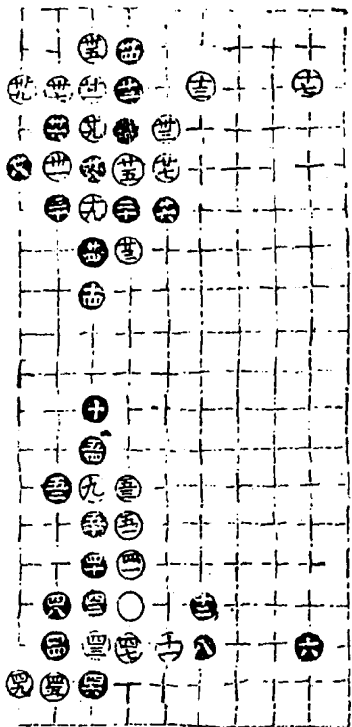


第五局七十二舉



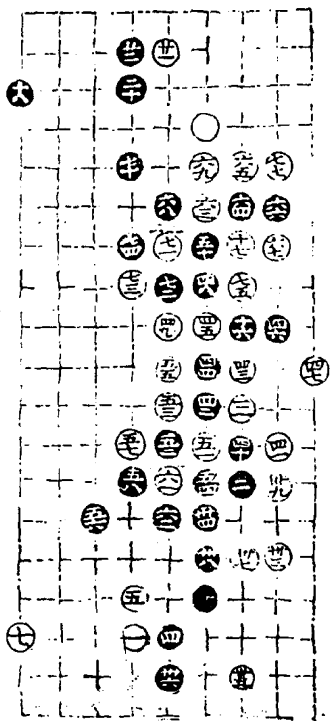
第六局七十五舉

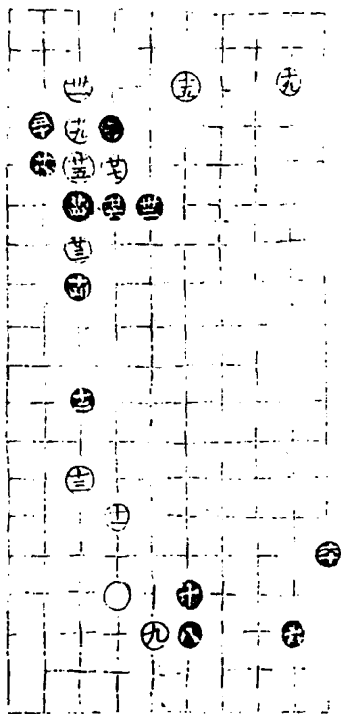




三同九

第七局七十七舉

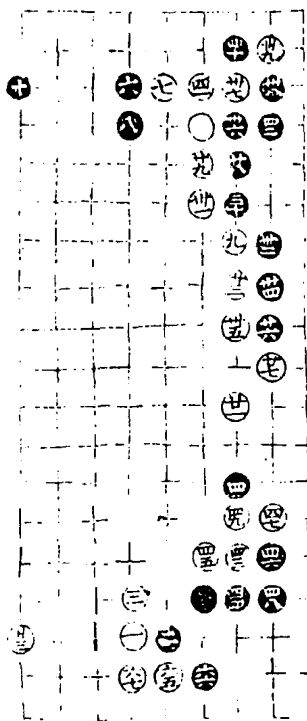




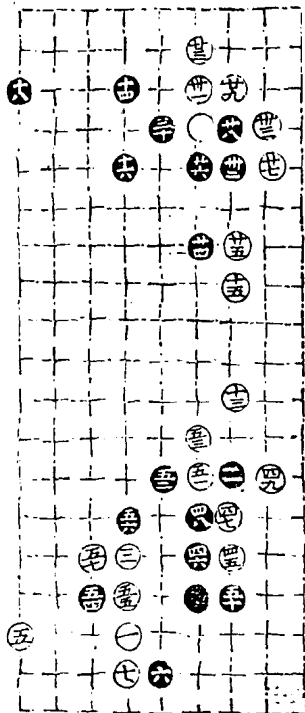
五九同五

七六同七

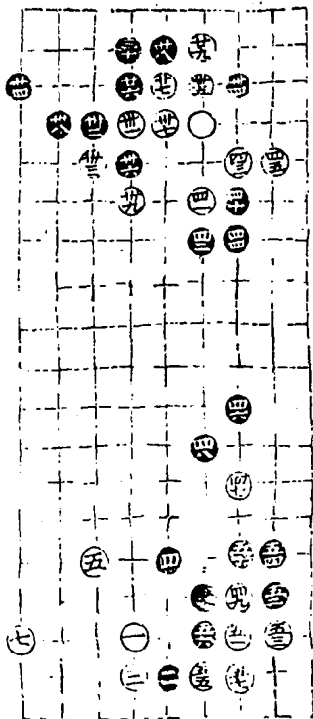
第八局六十七卒



第九局八十一舉

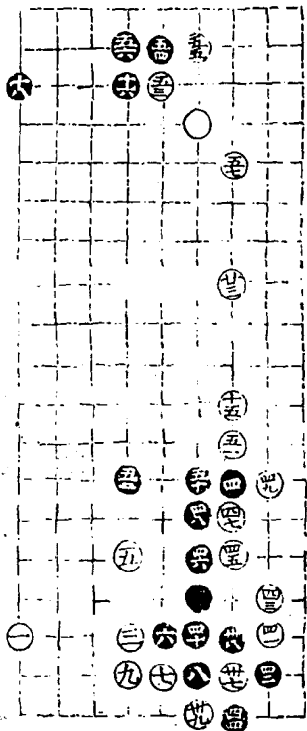


第十局五十七舉



正兵部一

第一局九三臨一宮六十五舉



廿

十九

十八

十一

十二

十三

十六

十五

十七

十四

十八

十三

九

十

十一

二十

九

八

十一

十

九

十二

十一

十

十三

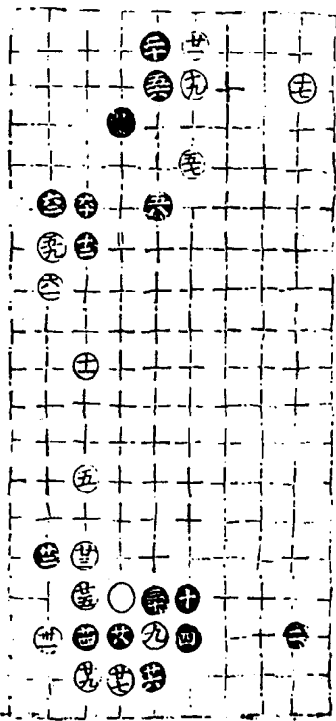
十二

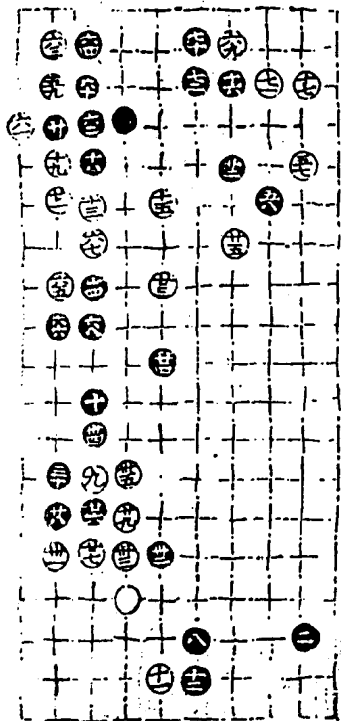
十一

十四

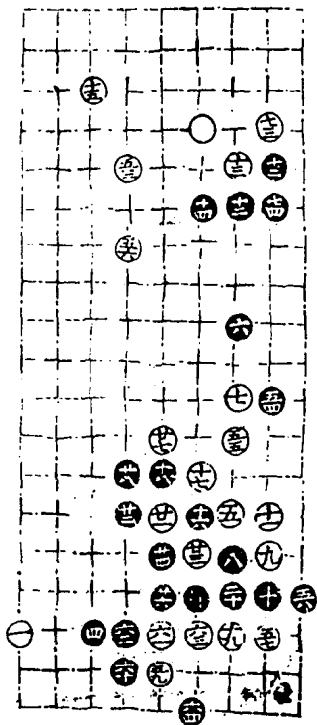
十三

十二

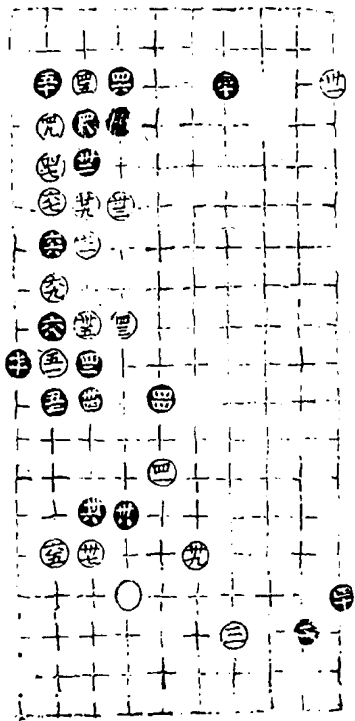




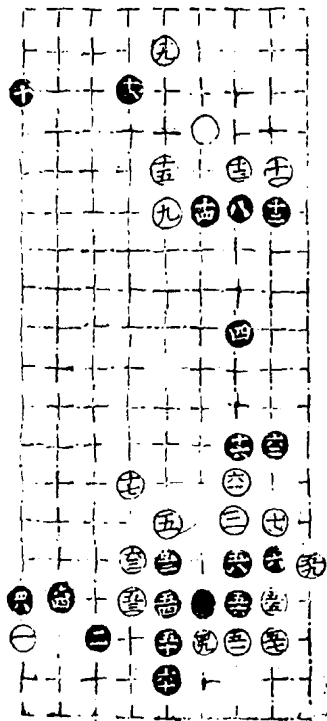
第五局七十四舉



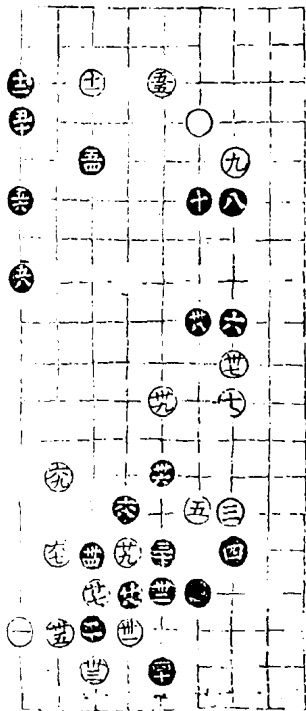
廿五同十六

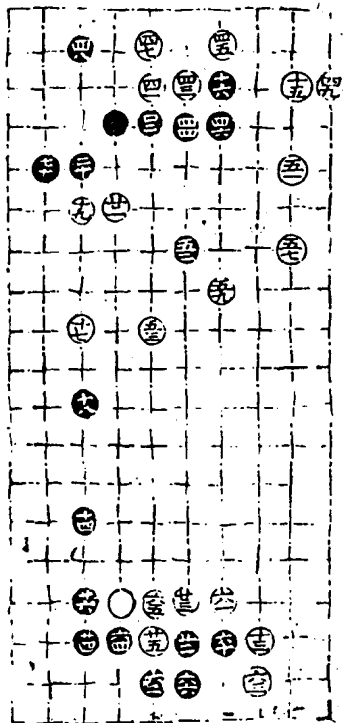


第六局六十四舉

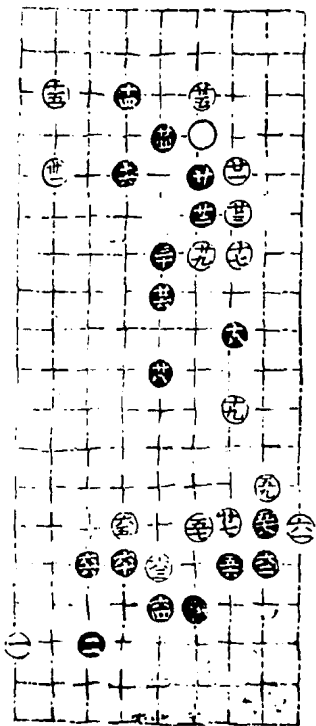


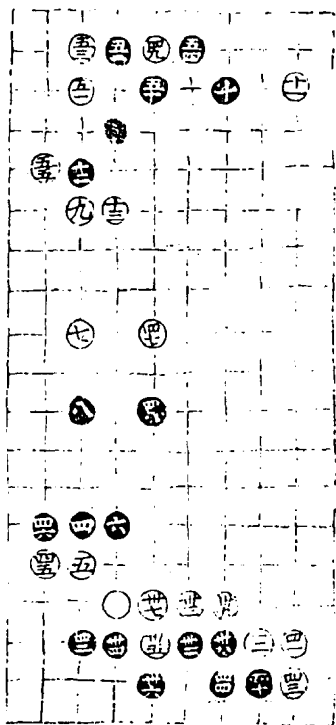
第七局七十舉



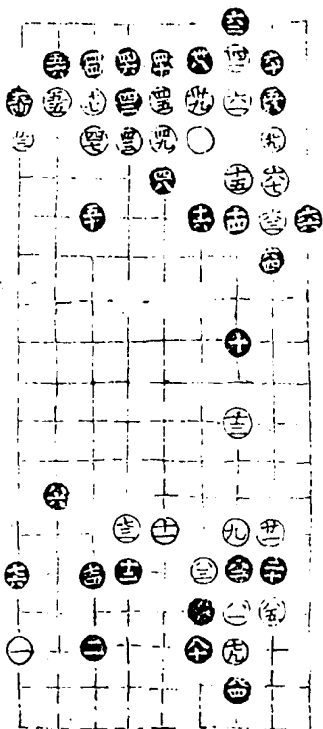


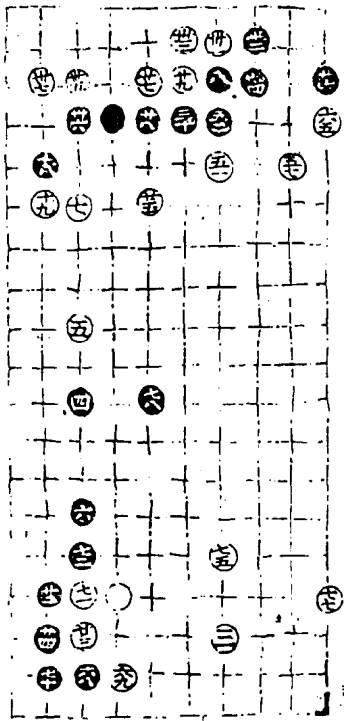
第八局六十六舉



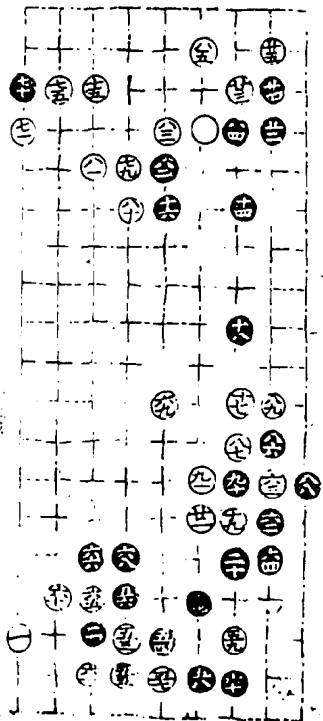


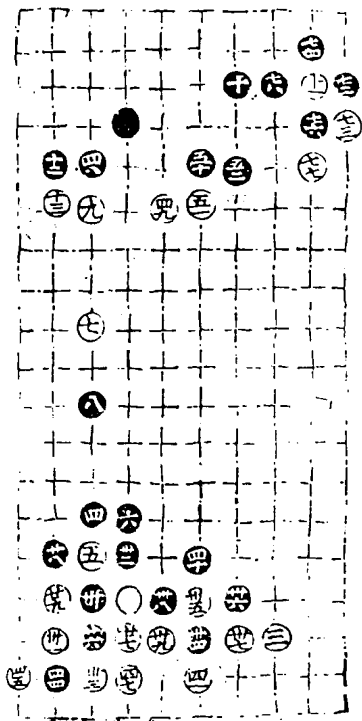
第九局八十六舉





第十局九十一舉





四二同五

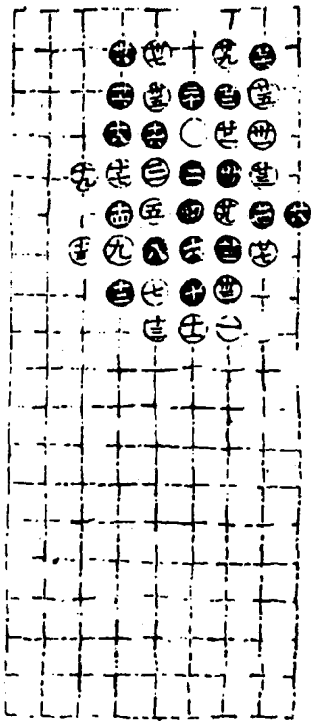
四三同三五

四六同三四

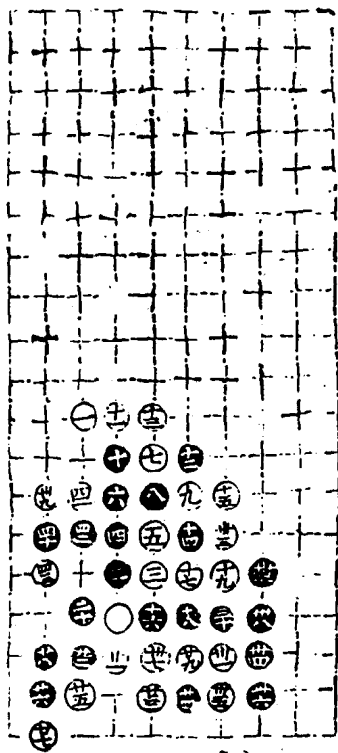
古今圖書集成
卷之三十一
三十一

第三局九三臨七宮三十九舉

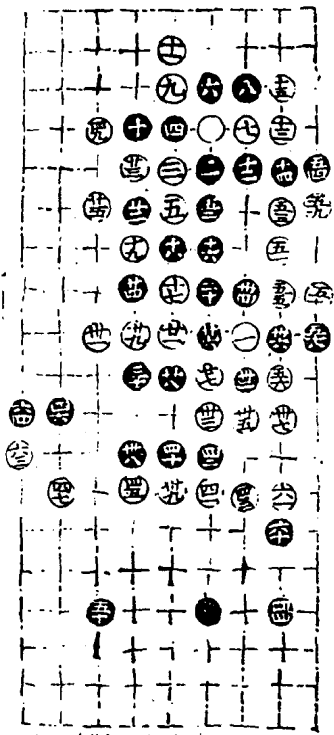
三四同廿九

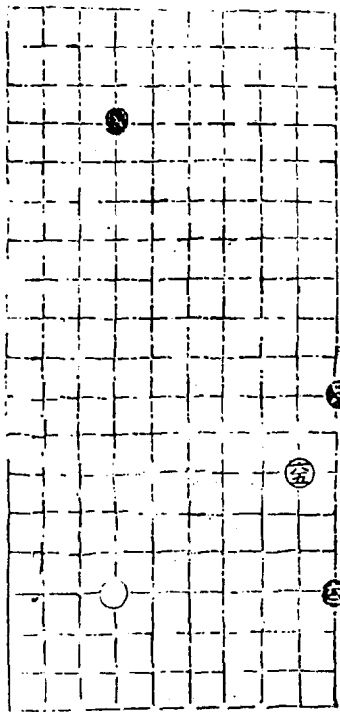


第四局九三臨三宮四十三舉



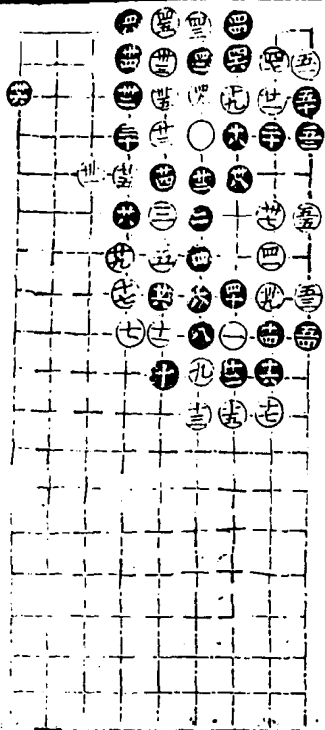
第五局九三臨七宮六十五舉





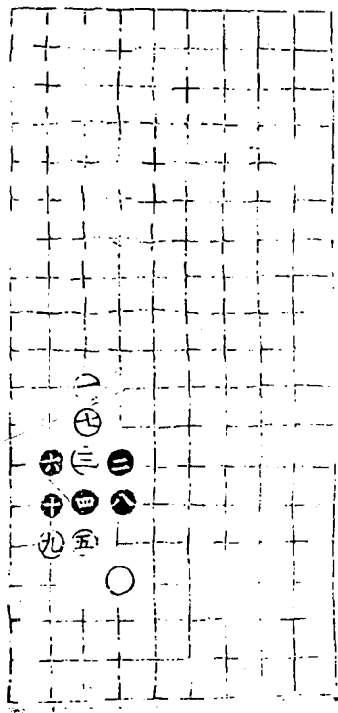
守城部上二二

第一局九三臨七宮五十五舉

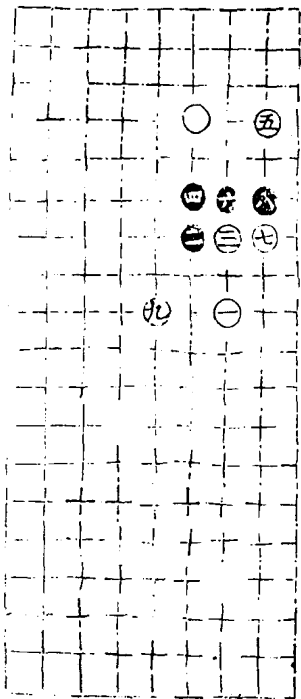


守城部上二六

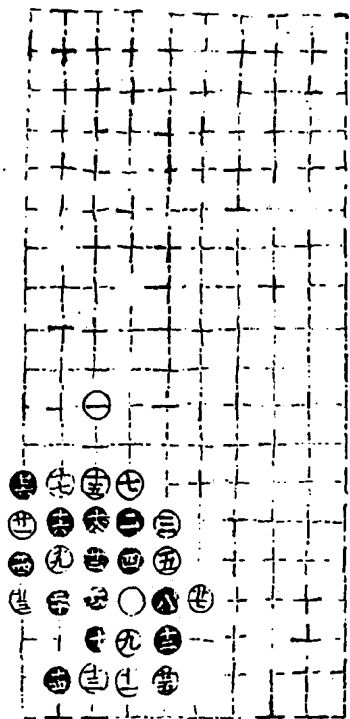
第一句九三臨三宮十舉



第二局九三臨七宮九舉



第四局九三臨三宮二十七舉



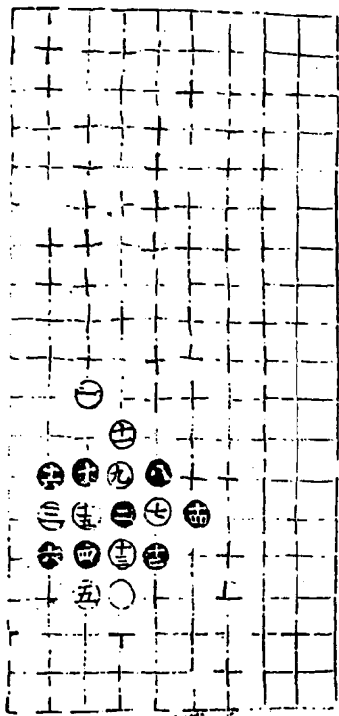
四
三
二
一

北

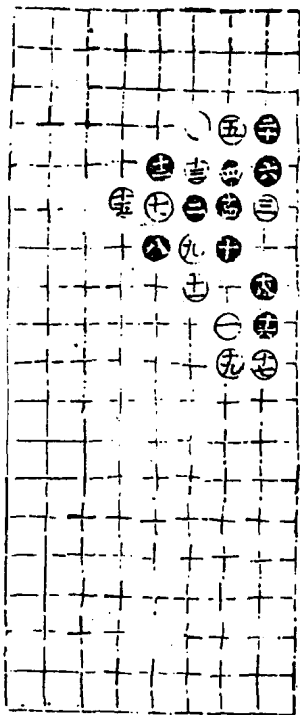


三四七四

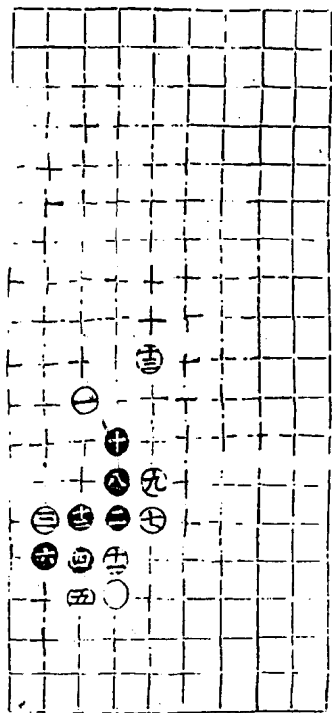
第二局九三暗三宮十六舉

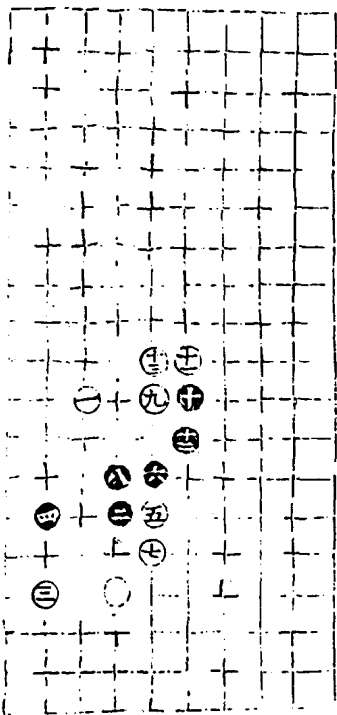


第三局九三臨七宮二十舉



第四局九三臨三宮十三舉

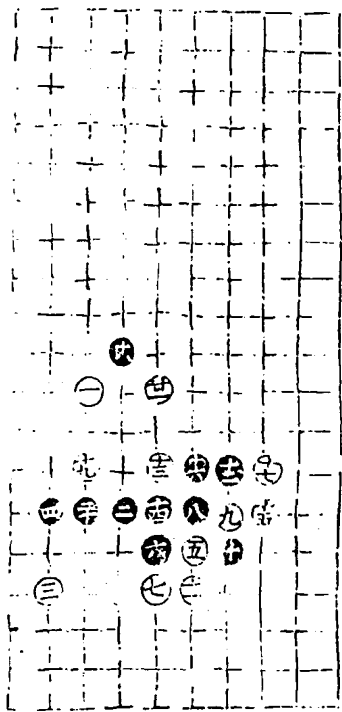




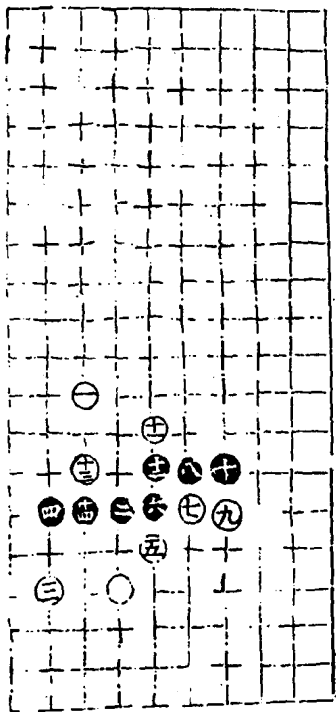
守城部上二四

第一句九三臨三宮十三舉

第三句九三暗三宮二十一舉

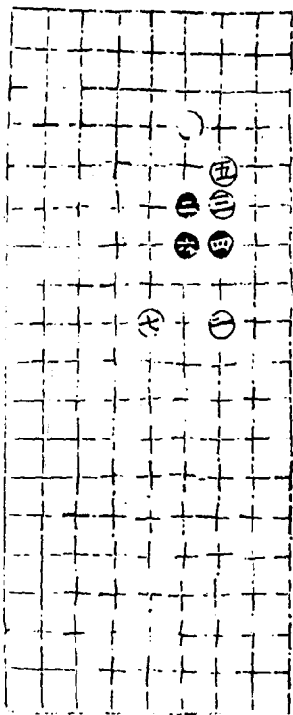


第五局九三臨一宮十四舉

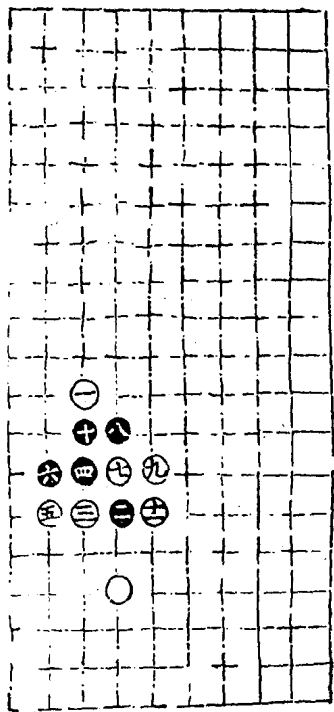


守城部上三五

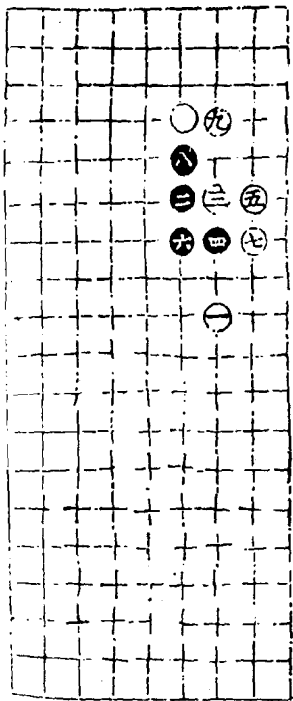
第一局九三臨七宮七舉



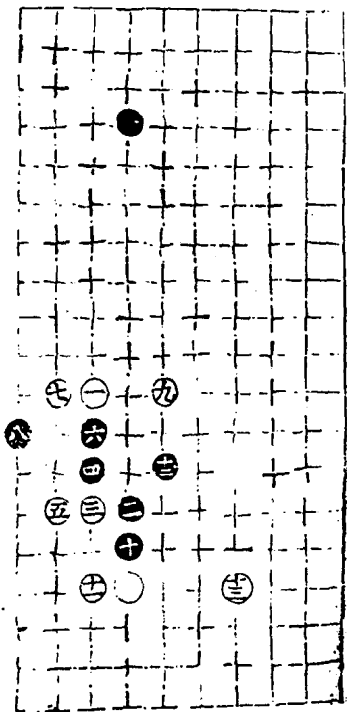
第二局九三臨三宮十一舉



第三局九三臨七宮九舉

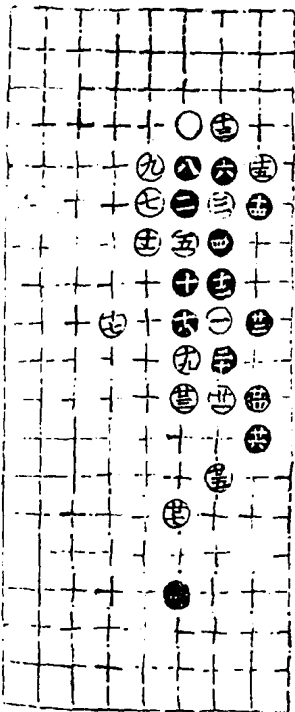


第四局九三臨三宮十三舉



第五局九三臨七宮二十七舉

十六同三

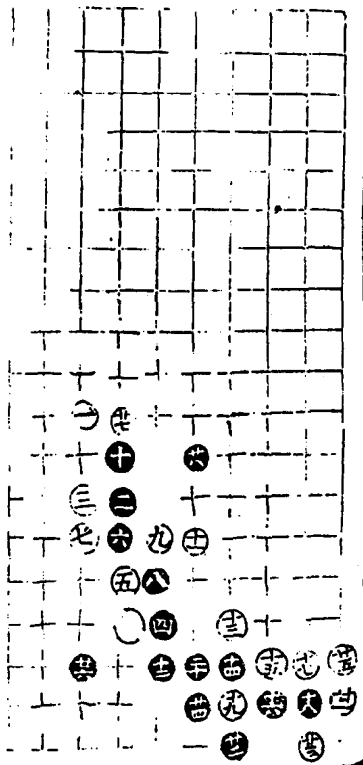




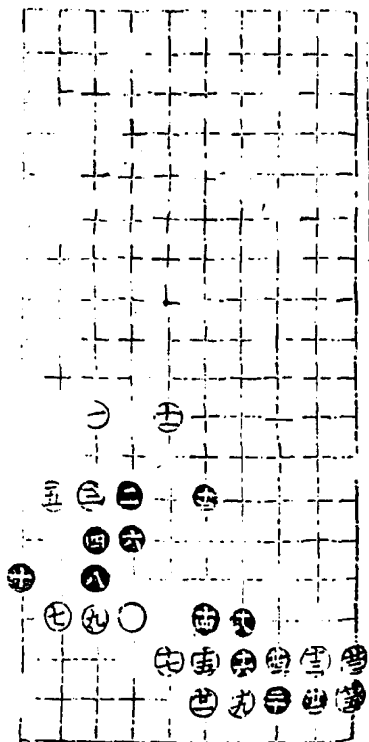
第二局 三臨官四十六卷

廿六局

第三局九三臨三宮二十八舉



第五局九三臨三宮二十五舉



適情錄第十卷終