

適

情

錄

適情錄第七卷

永嘉林應龍著

開疆部上三 開疆部上二

開疆部下一 開疆部下二

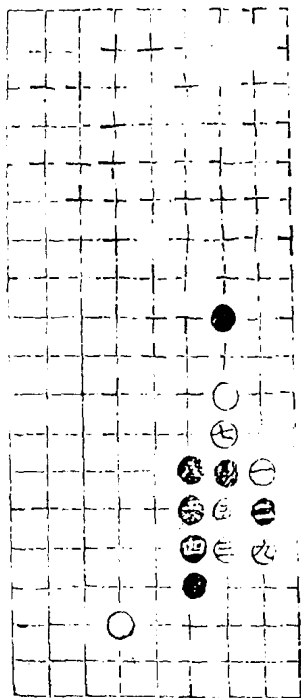
受降部上一 受降部上二

受降部上三 受降部上四

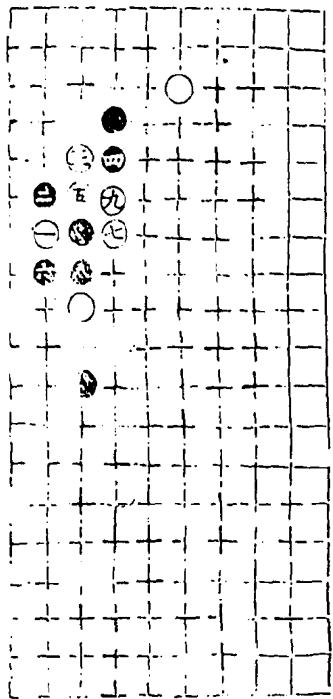
受降部上五 受降部下

開疆部上一

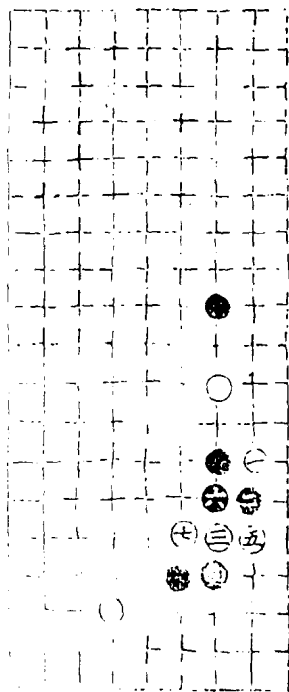
以下各五局主先舉敦復无悔
第一局二七臨七宮以下各九舉



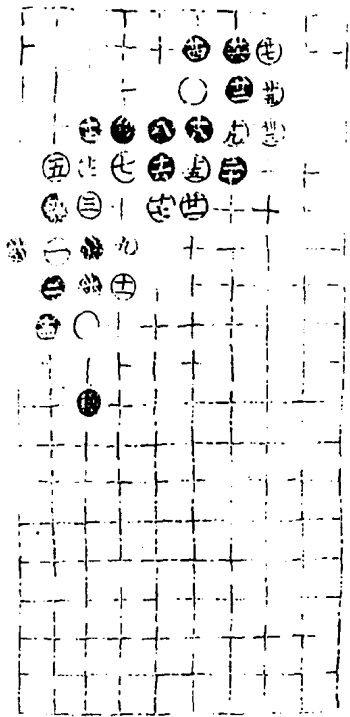
第二局二七臨三宮九舉



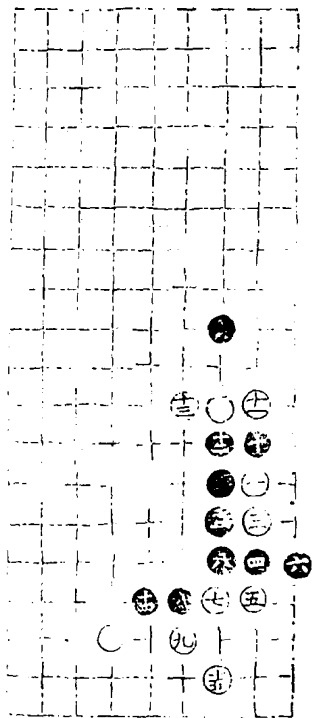
第三局二七臨七宮七舉



第四局二七臨三宮二十七舉

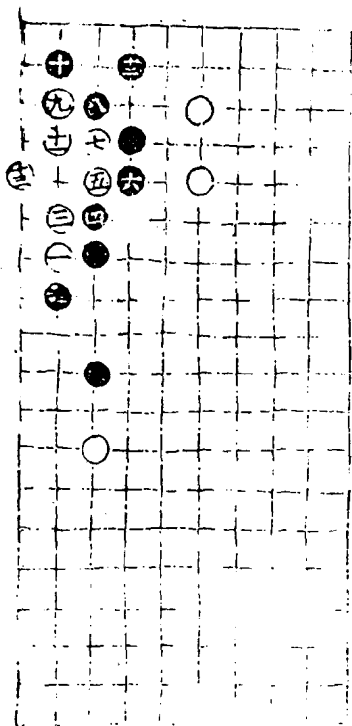


第五局二七臨十宮十五舉

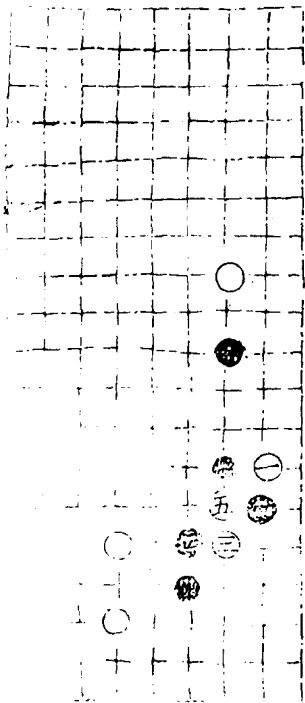


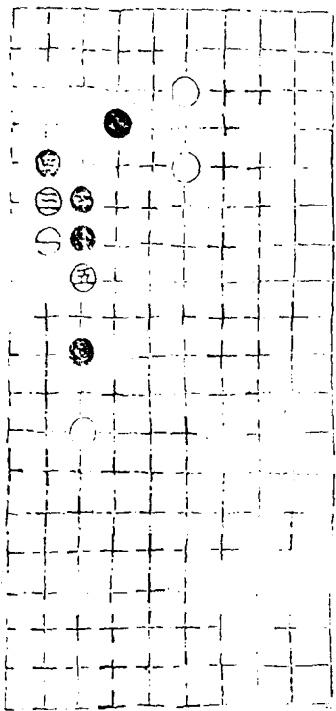
開禧部上二

第一句二十七臨三宮十三舉



第二局二十七臨七宮以下各五舉

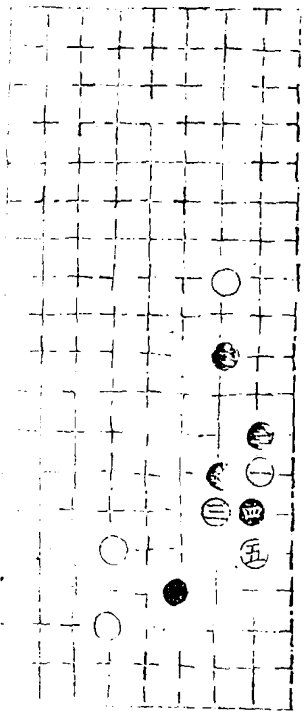




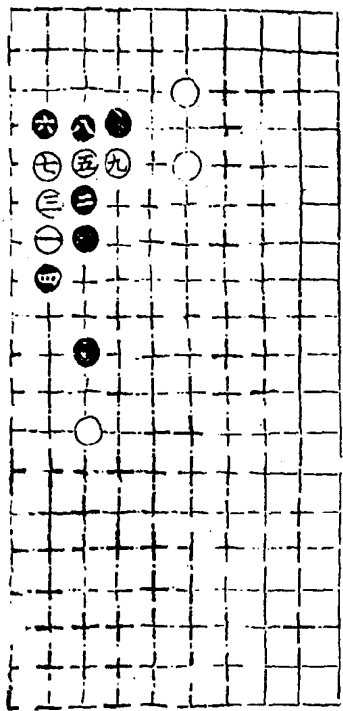
第三局二七臨三宮

五
六
七
八
九

第四局二七臨七宮

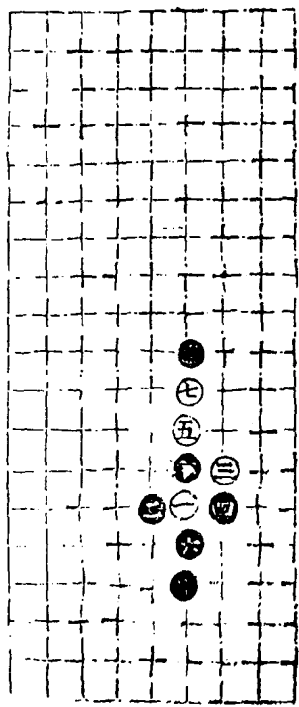


第五局二七臨三宮九舉

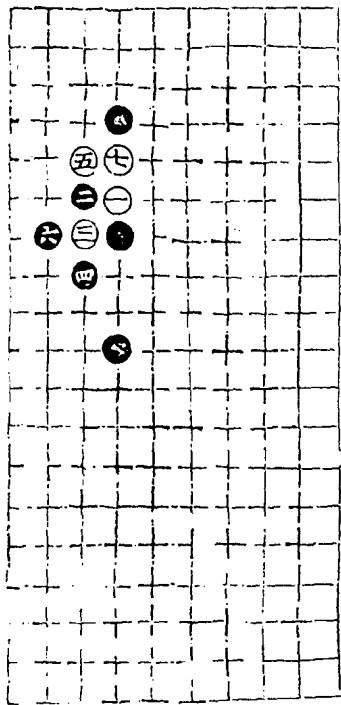


開疆部下一

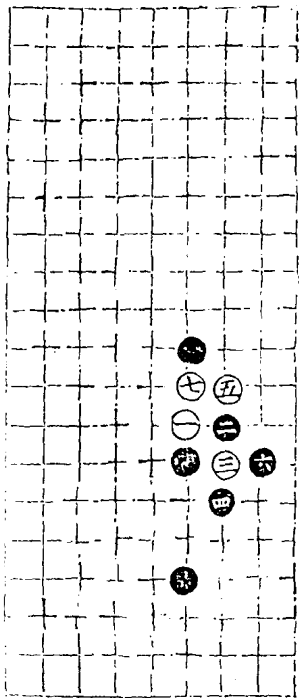
第一局四六臨六宮以下各七舉



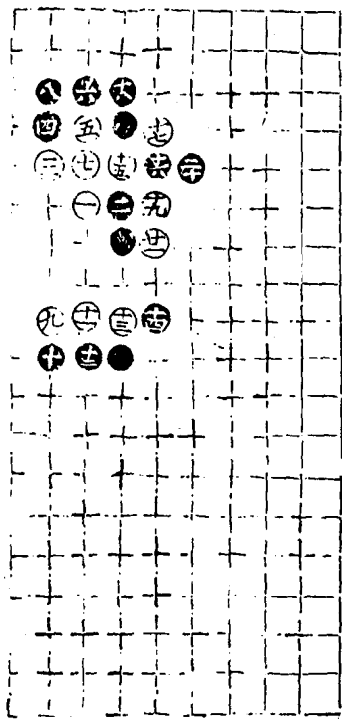
第二局三六臨四宮



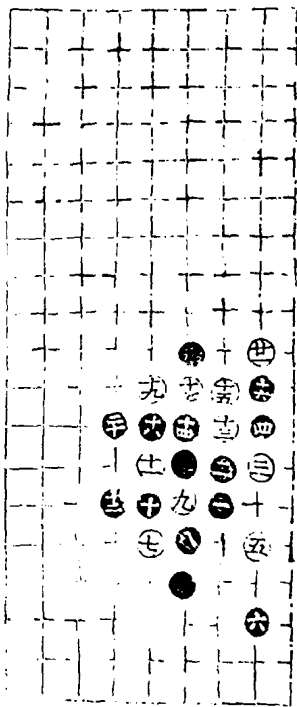
第三局四八臨七宮

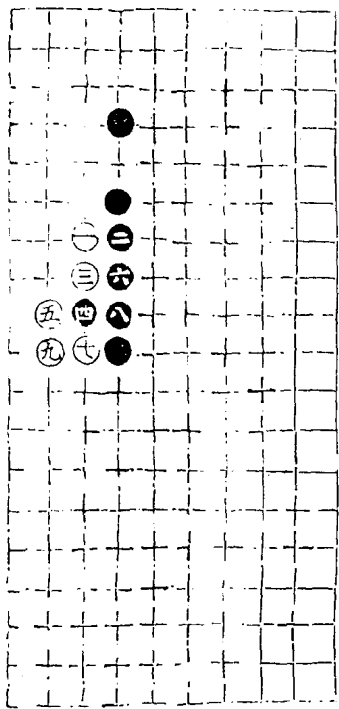


第四局 四六臨四宮以下各二十一舉



第五局三六臨六宮

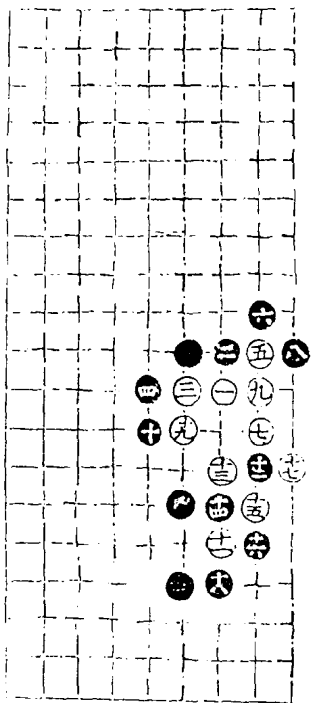




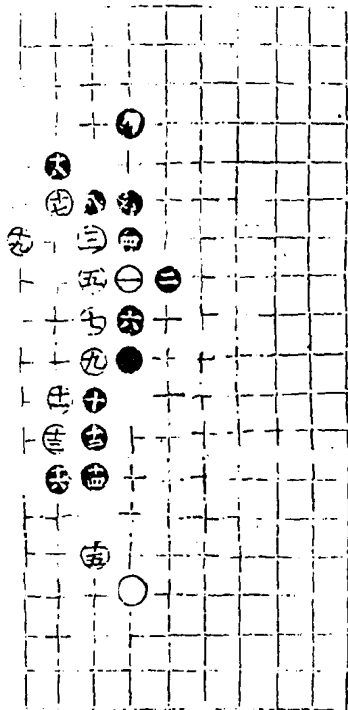
第一局三七臨三宮九舉

開疆卞下二

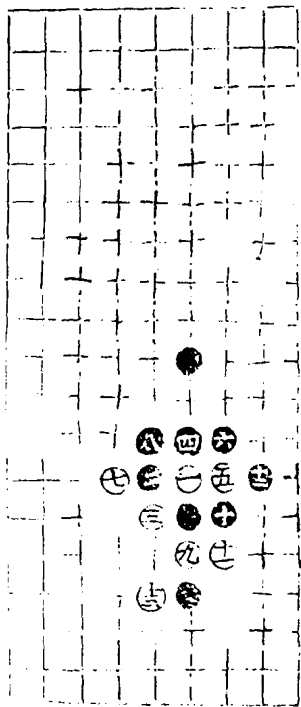
第二局四七臨七宮以下各十九舉



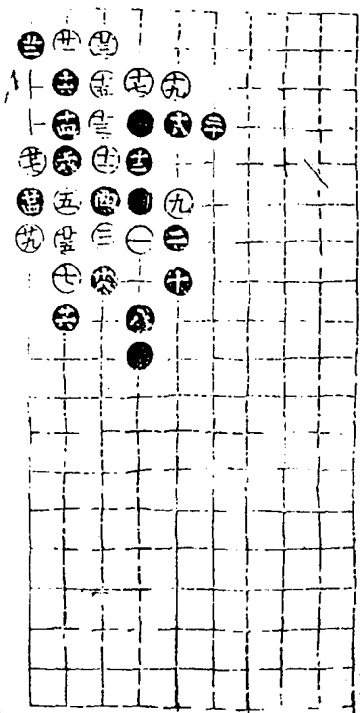
第三局四八臨三宮



第四局三九臨七宮十三舉



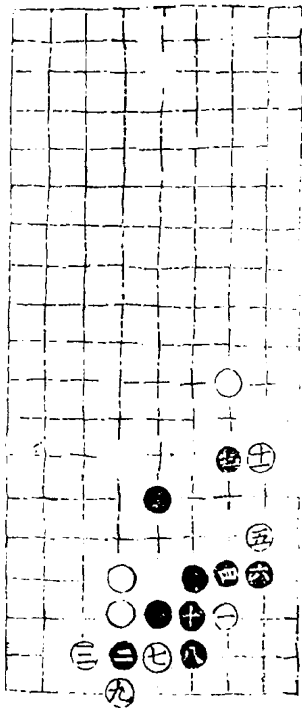
第五局四七臨三官二十九舉



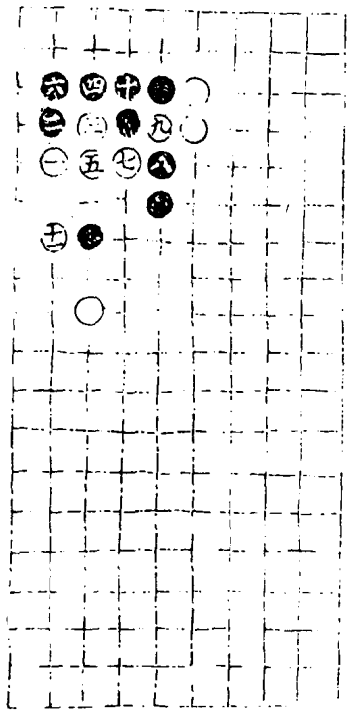
受降部上一

以下各五局主先舉牽復吉

第一局二五臨六宮以下各十一舉

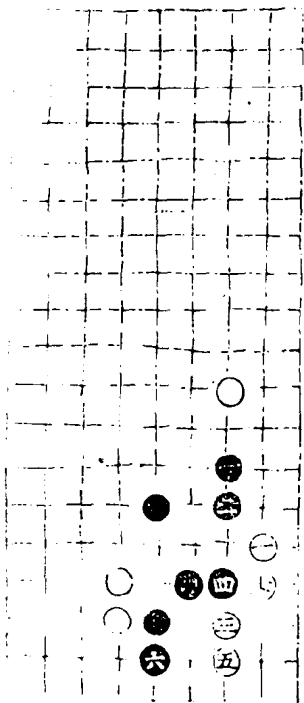


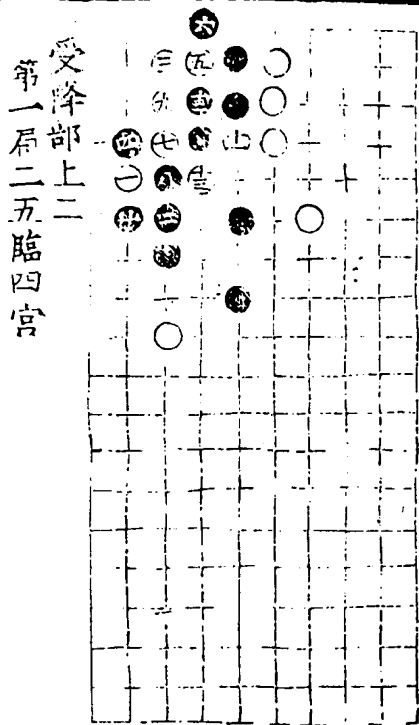
第二局二五臨四官



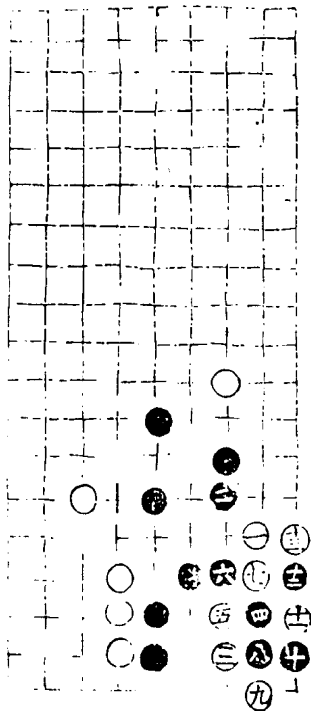
通竹金
年
法心堂

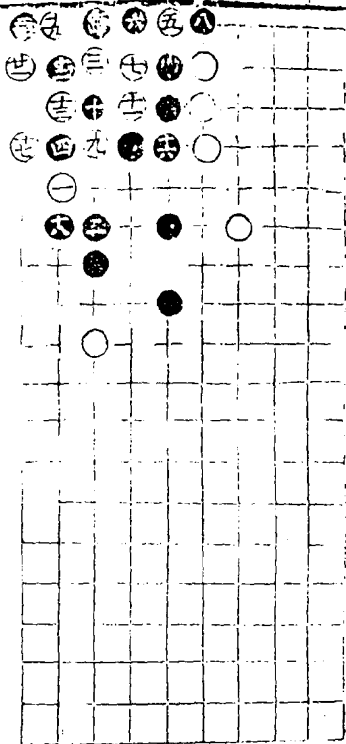
第三局三三臨六宮七舉





第二局二五臨六宮

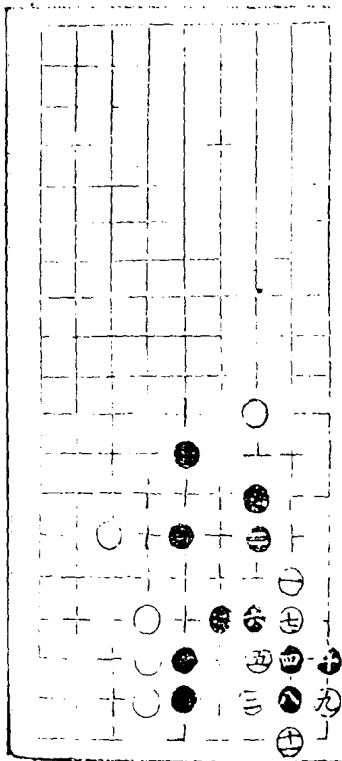




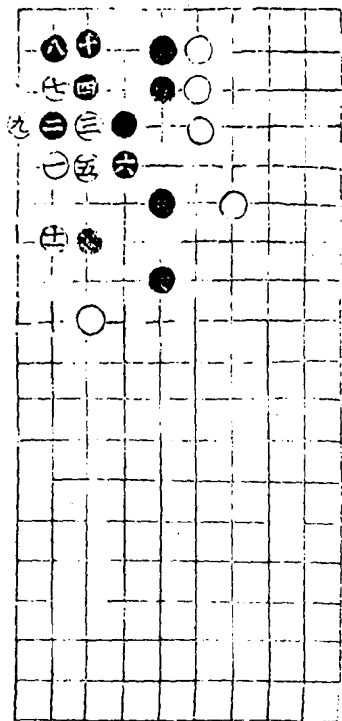
第二局二五臨四宮二十一舉

十五同十

第四局二五臨六宮以下各十一舉

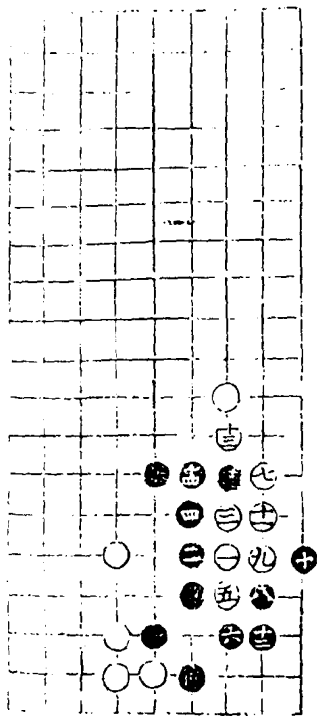


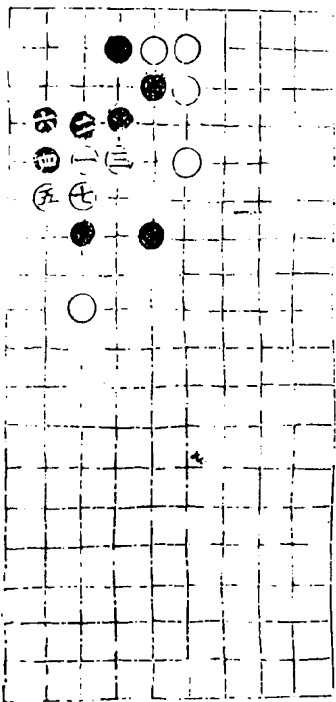
第五局二五臨四官



受降部上三

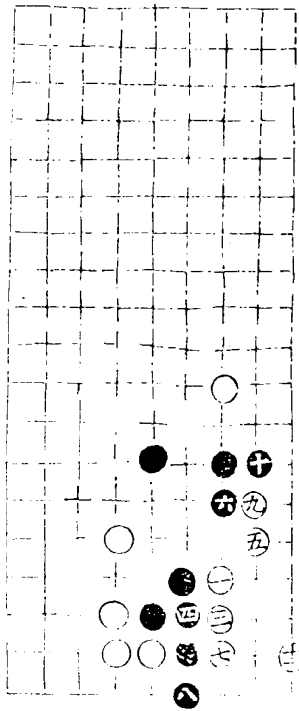
第一局三五臨六宮十四舉



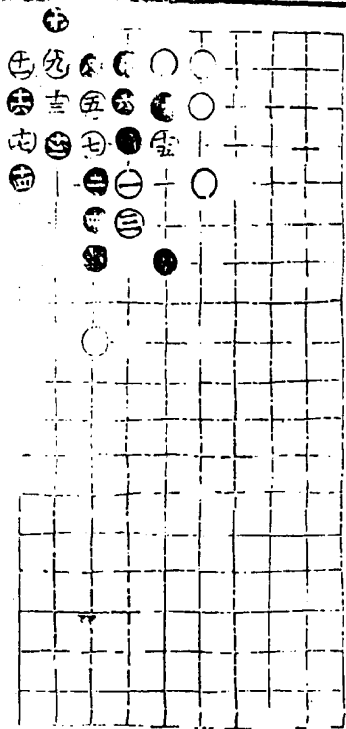


第二局三五臨四宮七舉

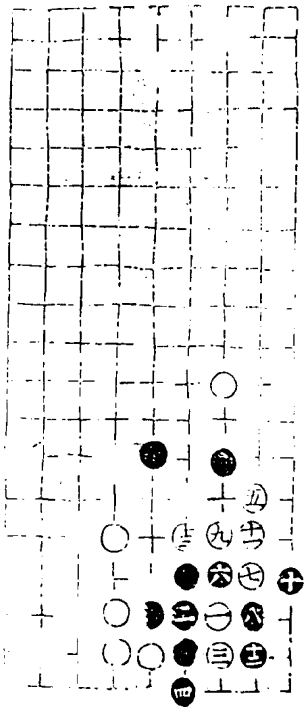
第三局三四臨六宮十一舉

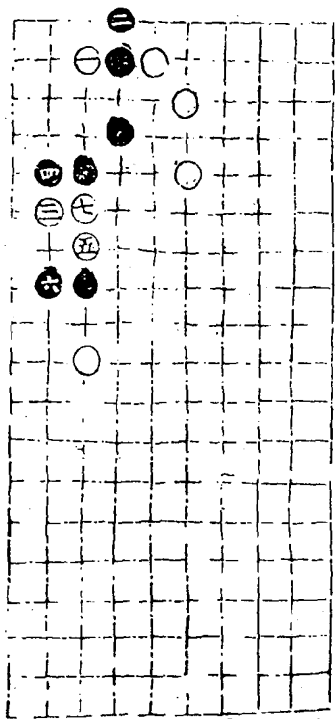


第四局四五臨四官十七舉



第五局三三臨六宮十三舉

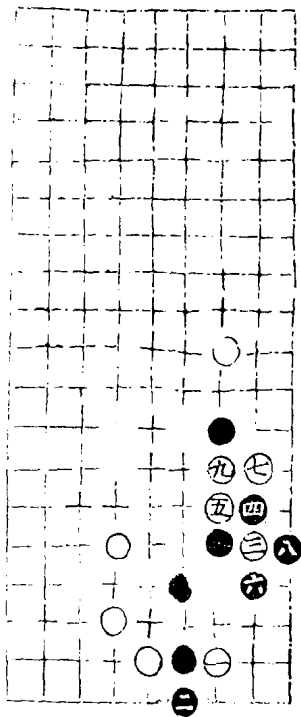




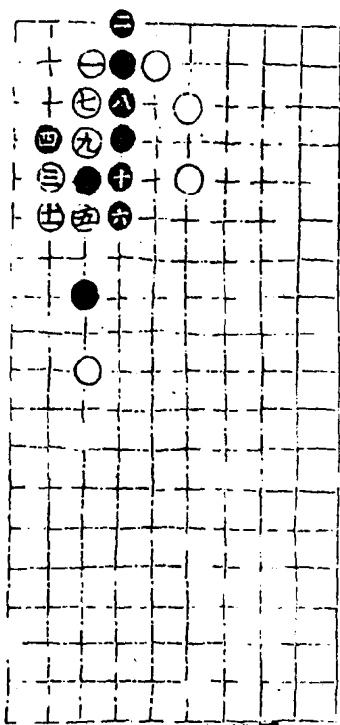
受降部上四

第一局三二臨四宮七舉

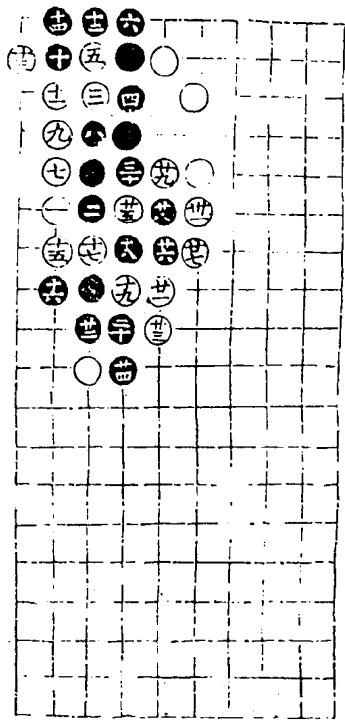
第二局三三臨六宮九舉



第三局三二臨四宮十一舉

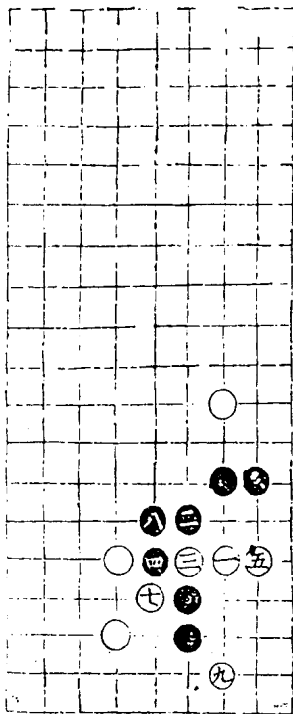


第五局二六臨四宮三十一舉

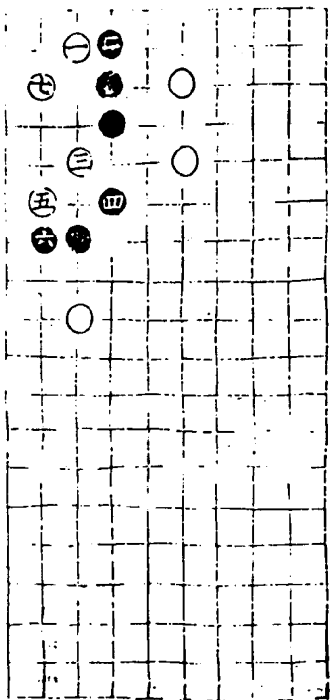


受降部上五

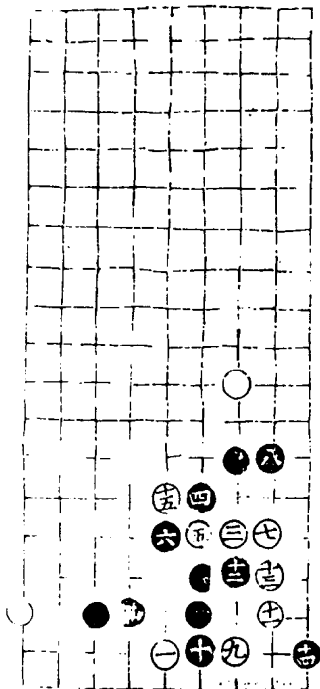
第一局三五臨六宮九舉



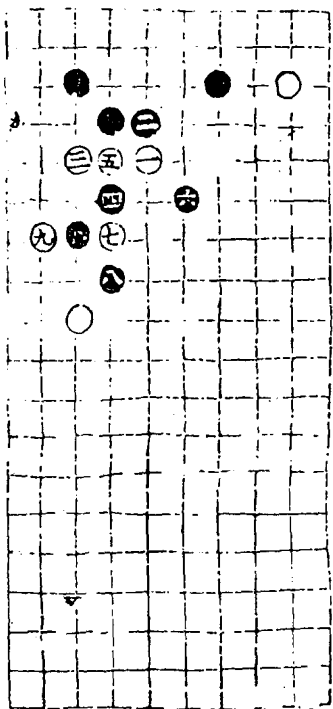
第二局三二臨四宮七舉



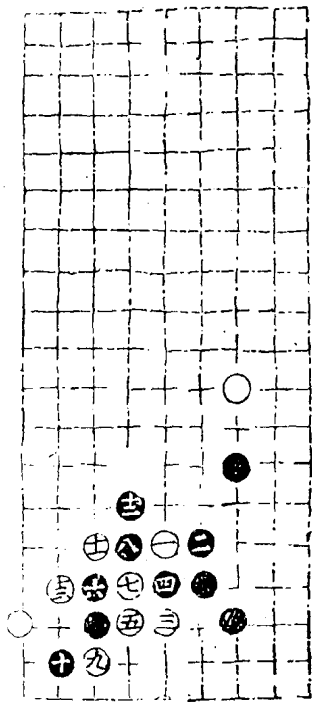
第三局五二臨六宮十五舉



第四局五五臨四宮九舉

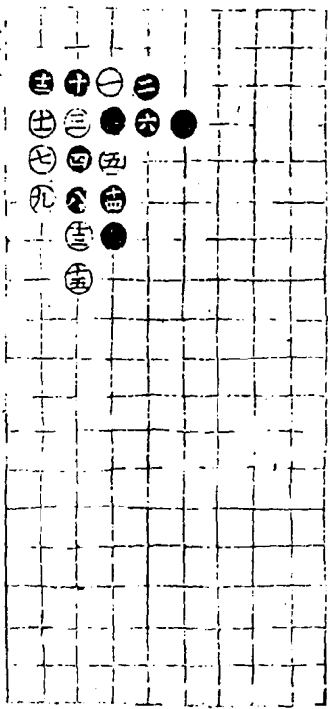


第五局五五臨六宮十三舉

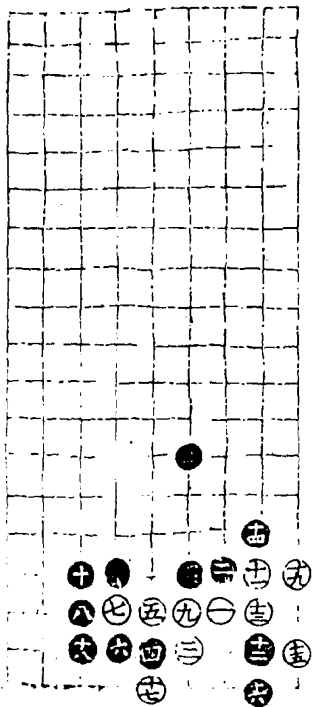


受降部下

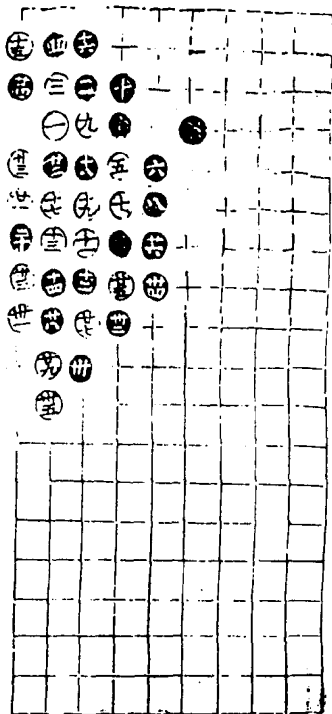
第一局四三臨四宮十五舉

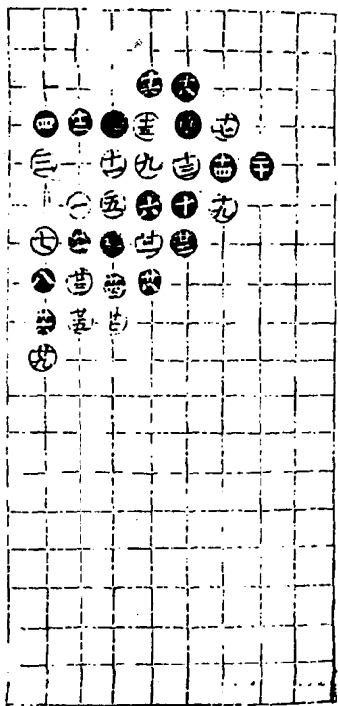


第二局三三臨六宮十九舉



第三局二四臨四宮三十五舉





第五局三六臨四宮

適情錄第七卷終

適情錄第八卷

永嘉林應龍著

解圍部一

解圍部二

得雋部一

得雋部二

會盟部

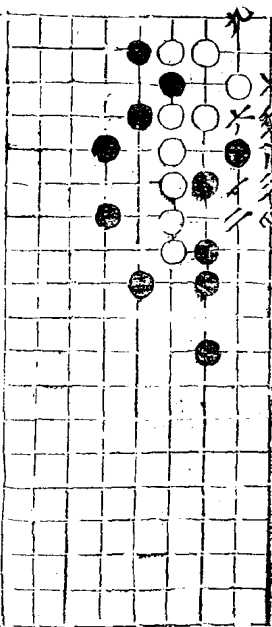
舞劍部

演武部

解圍部一

凡十局以下主先舉有終吉

第一局六二臨二宮九舉

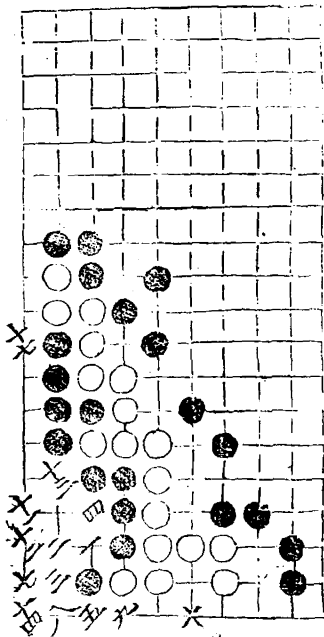


第二局三三臨八宮十七舉

六同一

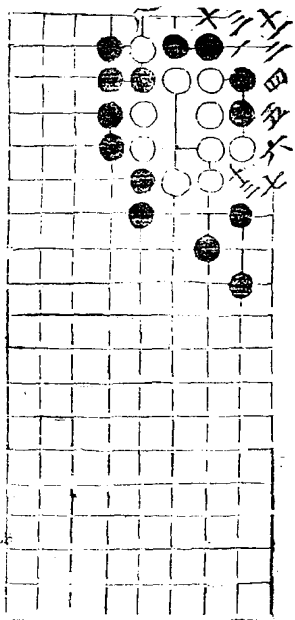
十五同七

十六同三

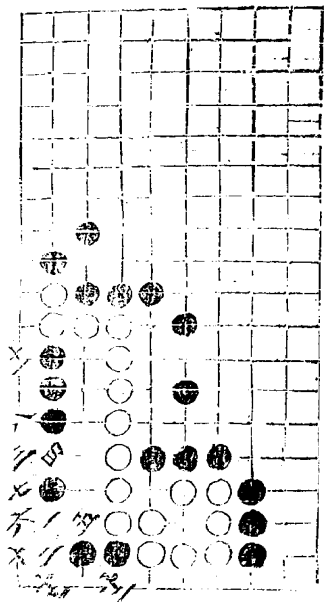


第三局二二臨二宮以下各十三舉

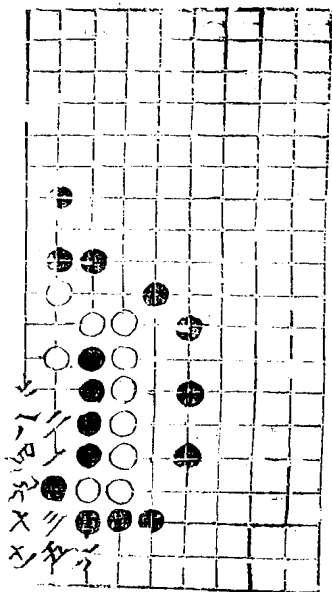
九同五 十三在三二



第四局三三臨八宮
九同七



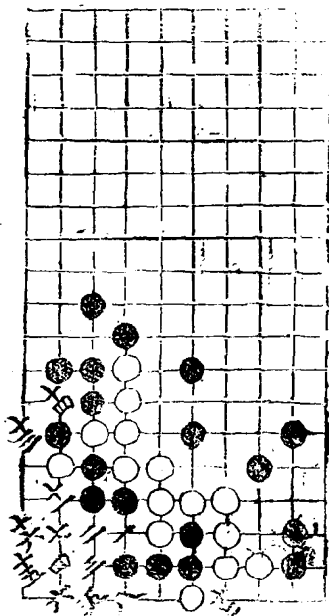
第六局五二臨八宮十一舉



第八局三四臨八宮

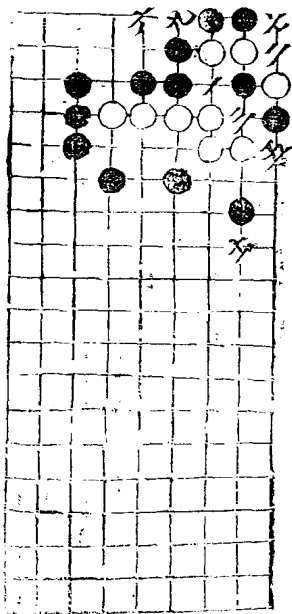
九及十二同三

十同五



第九局三三臨二官十一舉

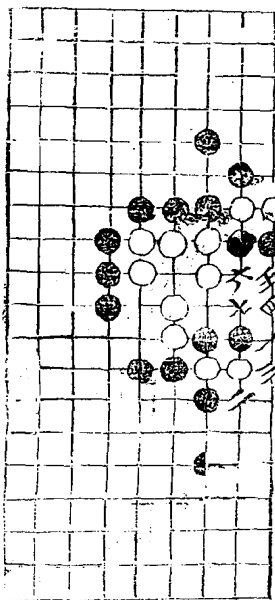
四及八在三 十在三



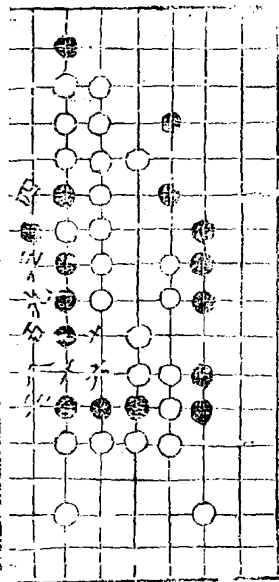
解圍部二

凡十五局

第一局一九臨七宮七舉



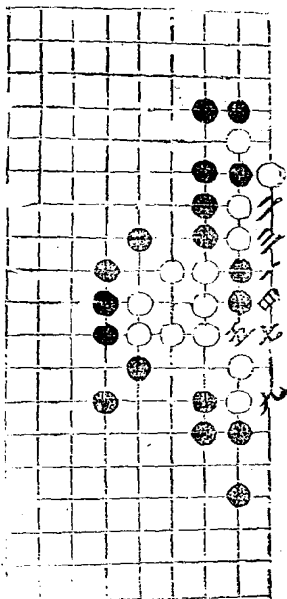
第二局七三臨三官以下各九舉



第三局九 臨七宮

六回

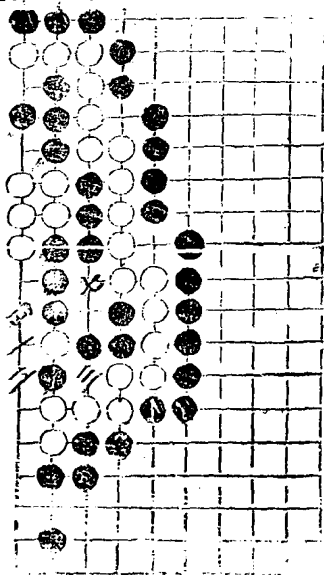
八在八三



第四局八一臨三宮以下各七舉

五在八二

六同一

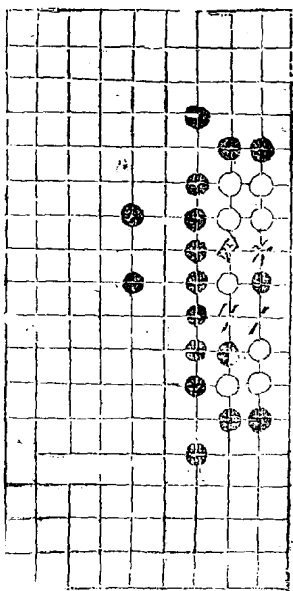


第五局一九臨七宮

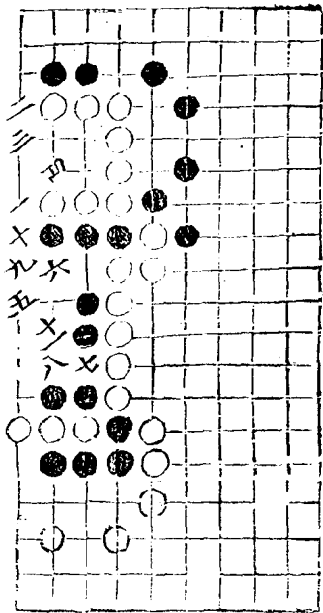
三在二八

五在二

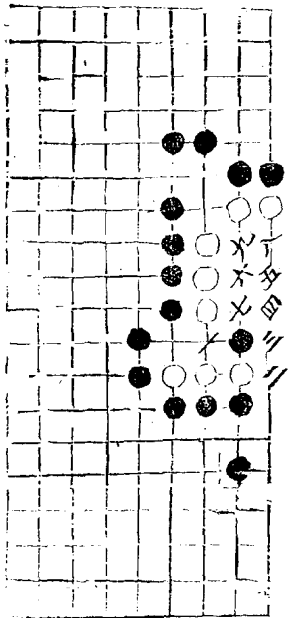
七在八二



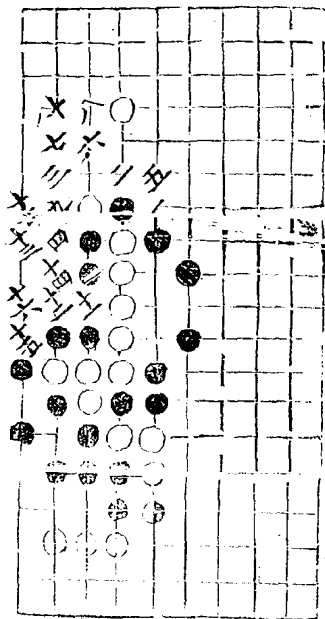
第六局一七臨三宮十一舉



第七局三九臨七宮九舉

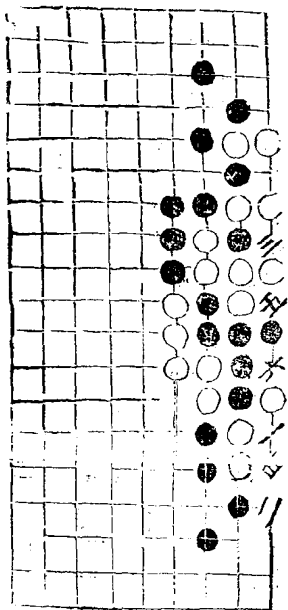


第八局五七郎三官十七舉

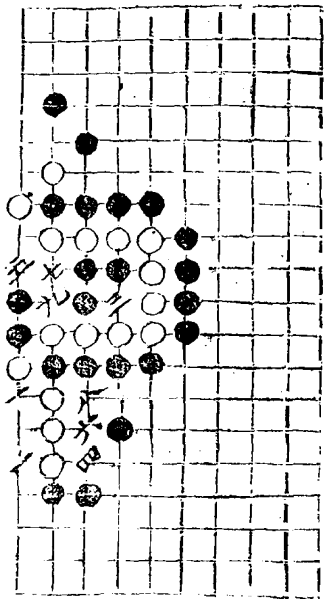


第九局一六臨六宮七舉

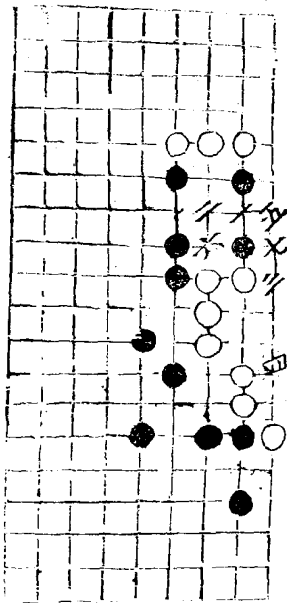
七在二六

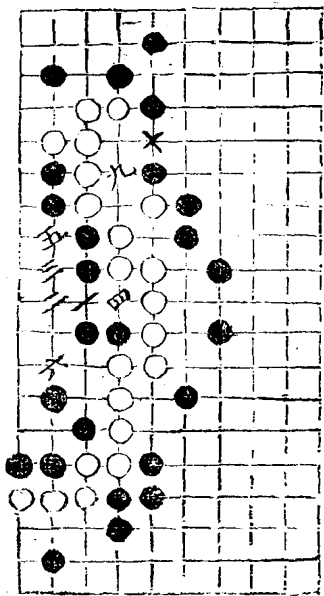


第十局七一臨三宮九舉



第十一局 七二臨七官七舉



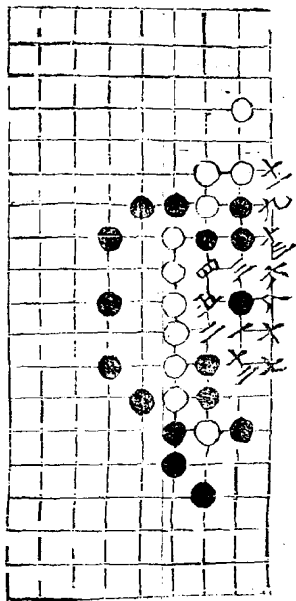


第十二局十三臨三官十舉

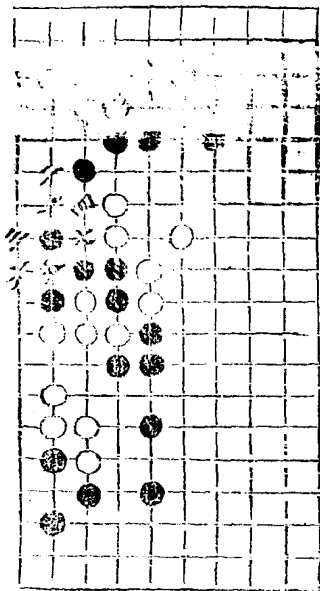
七回

八在三九

第十三局二九臨七官十三舉

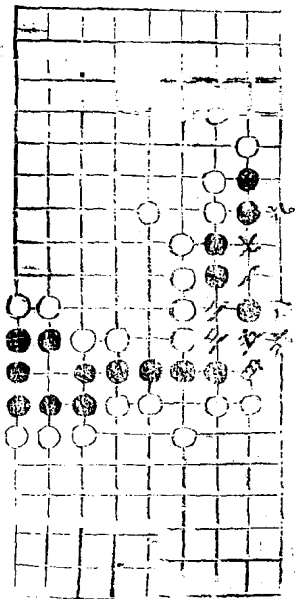


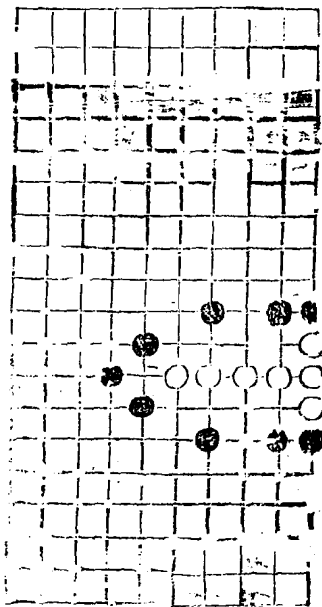
佐聖上局二七臨三管七舉



三六

五局九二臨七宮以下各九舉

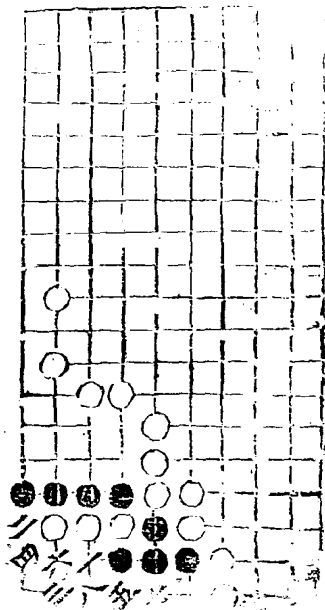




10

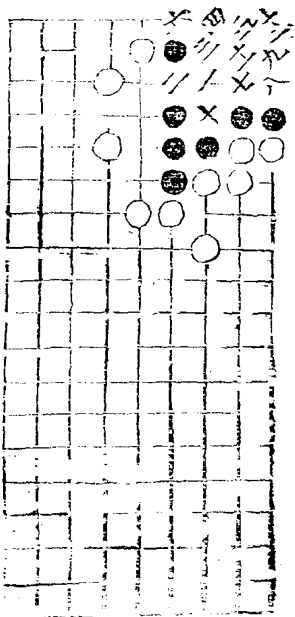
10

第二局二三臨八官
九回一



第二局三三臨二宮十三舉

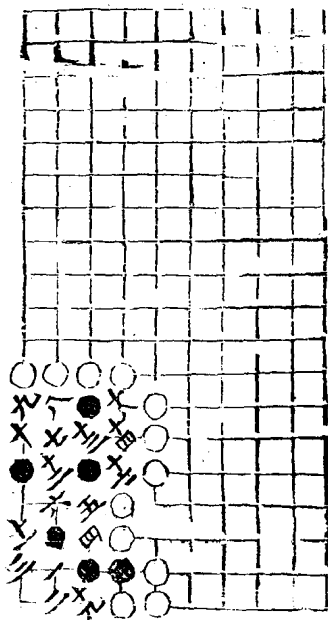
十三同十一



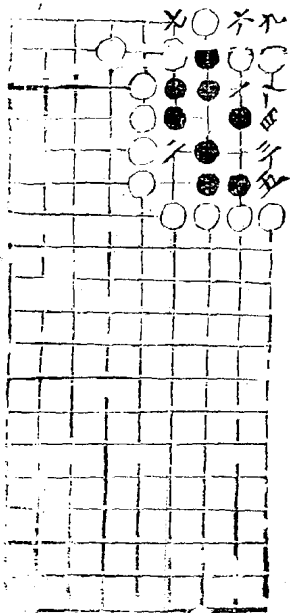
盤行四局二二臨八官十九舉

十五同十三

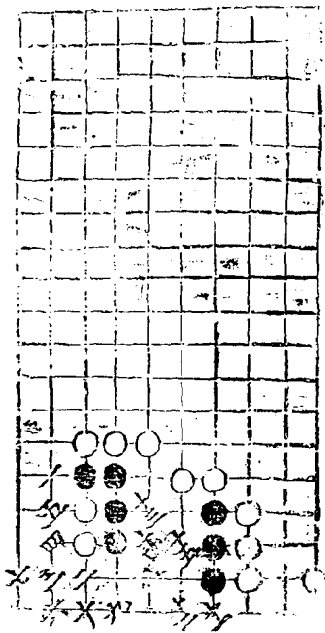
十六同七



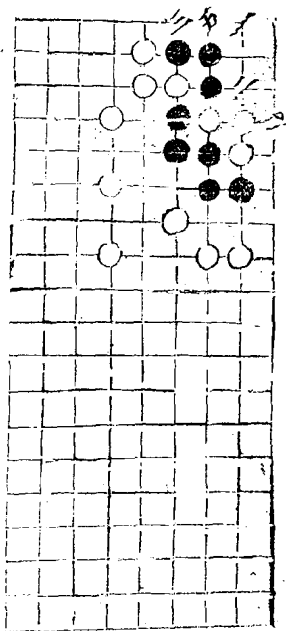
第五局三臨二宮九舉



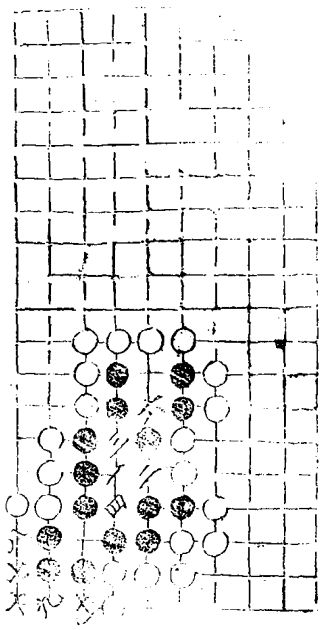
第六局五二臨八宮十五舉



第七局一三臨二宮五舉



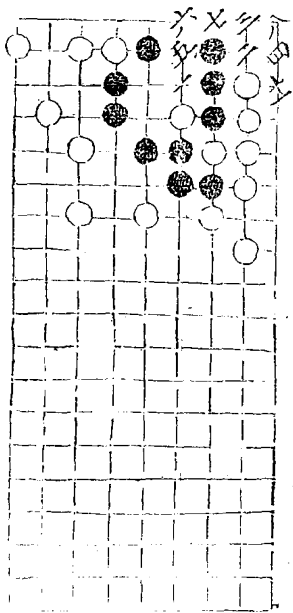
第八局五四臨八官以下各十一舉
 五同三



第九局三四臨二宮

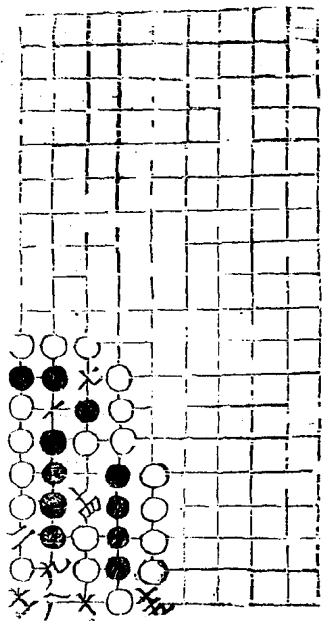
九同七

十同三



第十局七二臨八宮十七舉

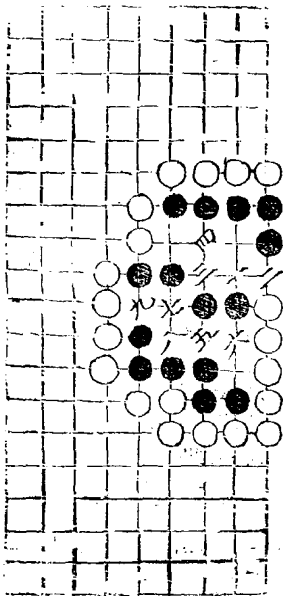
三在五一四在六五同一六在七一十二及十六同十
十三同八十七在二三



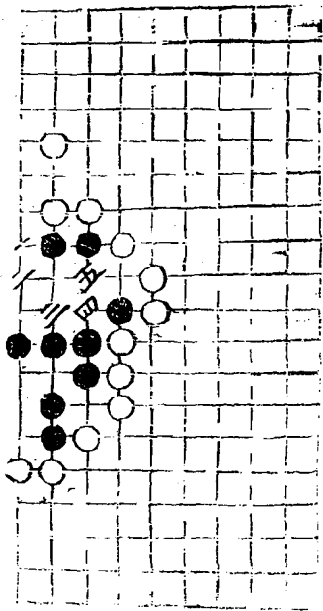
得雋部二

凡十五局

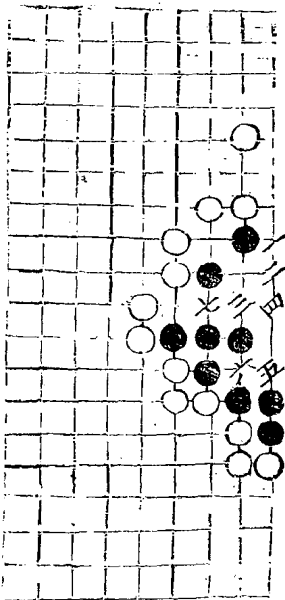
第一局九二臨七宮九舉



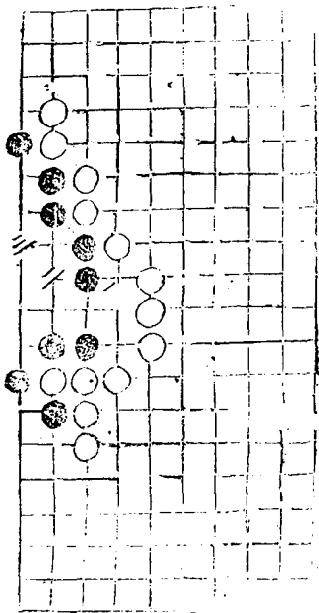
第二局一八臨三宮五舉



第三局八一臨七宮七舉

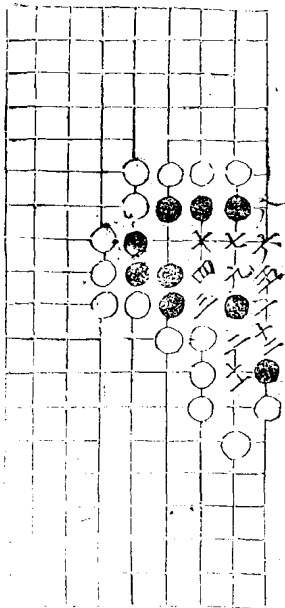


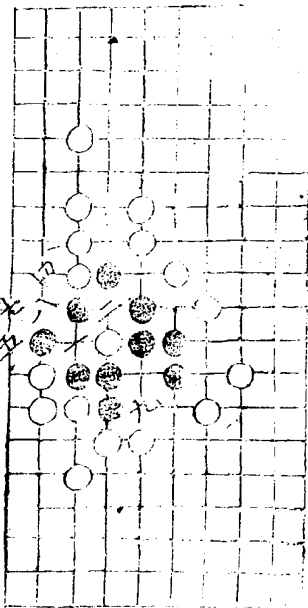
第四局四九臨三宮三舉



第五局十一臨七宮十三舉

十三局九



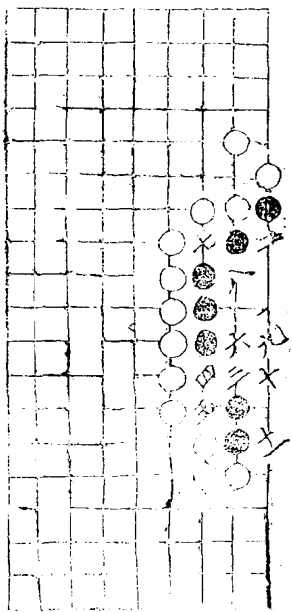


第六局九三臨三宮九舉

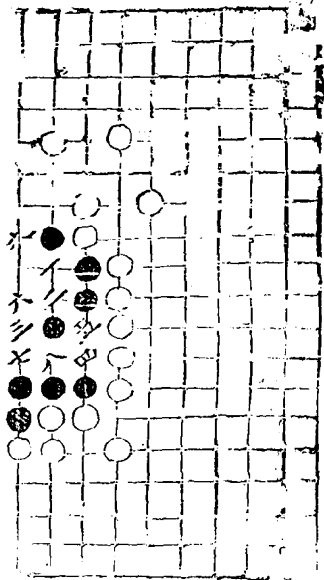
三同一

六在九四

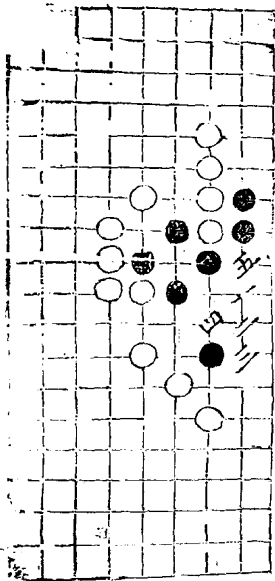
第七局十一臨七宮十一舉



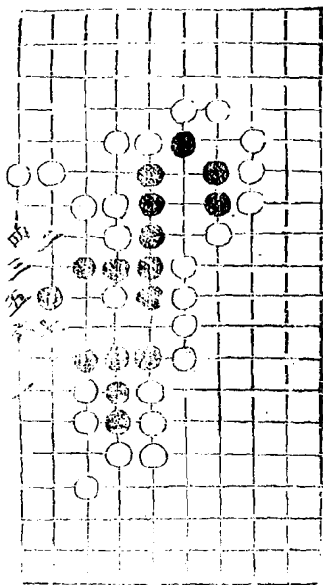
第八局二九臨三宮以下各九舉



第十一局十二臨七宮五舉

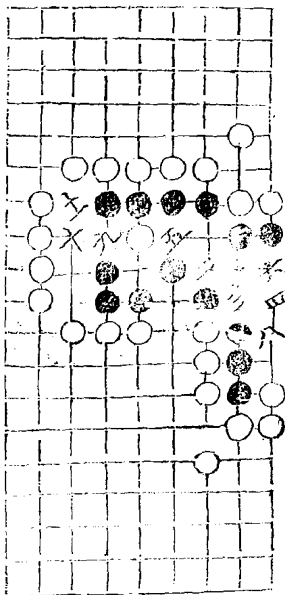


第十二局七二臨三宮七舉

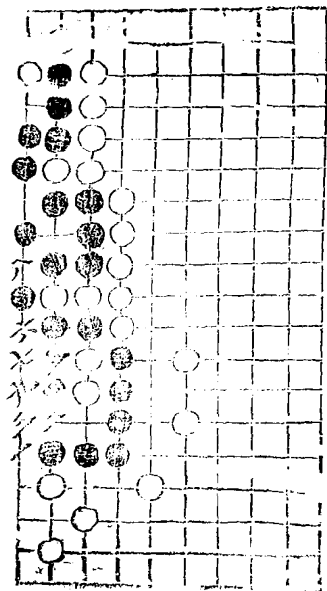


第十三局九二臨七宮十一舉

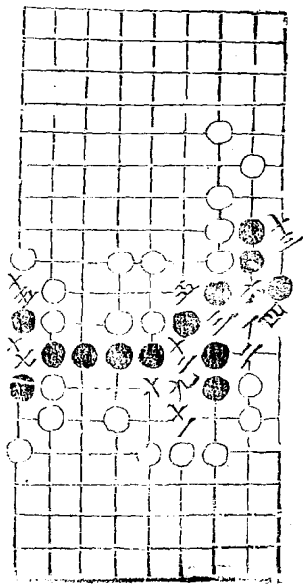
七同三

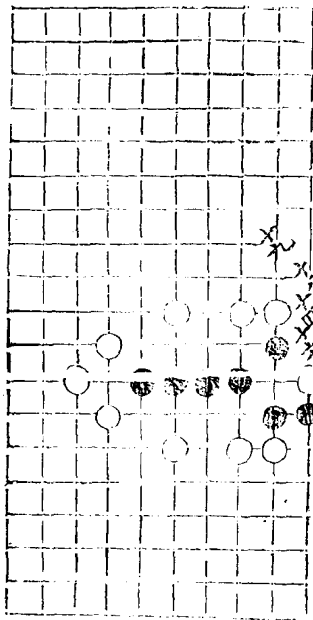


第十四局五一臨八宮九舉



第十五局二九臨七宮十九舉



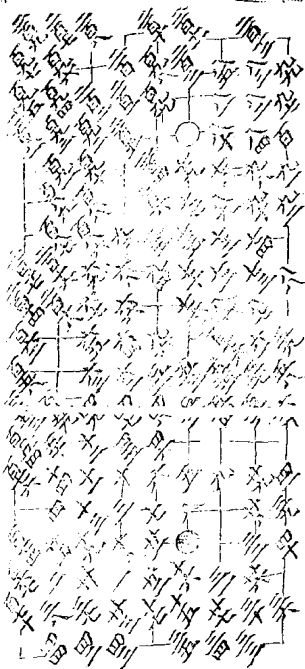


斗同三

八同二

會盟部

以下各二局主先舉同人于郊无咎
第一局二百九十九舉以下六三臨六宮





廿五同十八

百八同百七八

百八五同百三

二百四十同百三五

第二局三百七舉





百三同百廿四
 百八同百九
 三百同百九

百三同百廿八
 百九同百零
 百九同百零

百三同百十一
 百四同百零

1

2

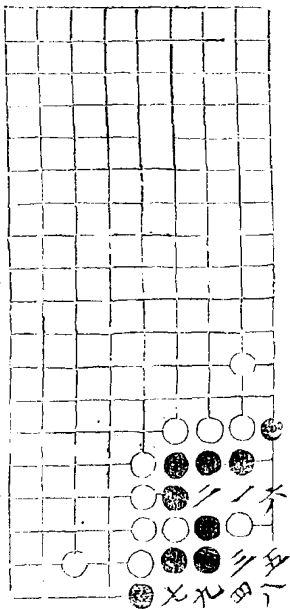
舞劍部

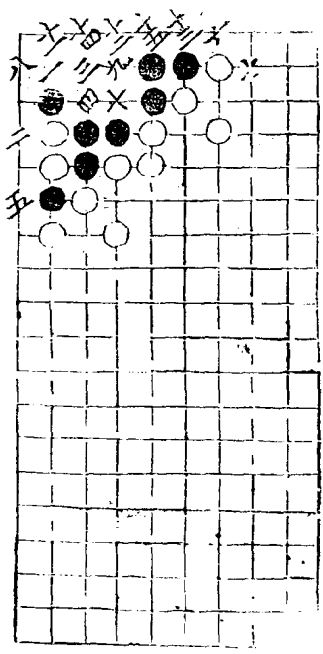
第一局二四臨六宮十二舉

十同四

土同七

十二同八





第二局二二臨四宮十八舉

十六同十三

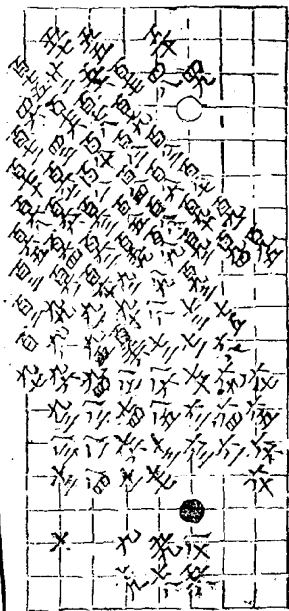
十七同十三

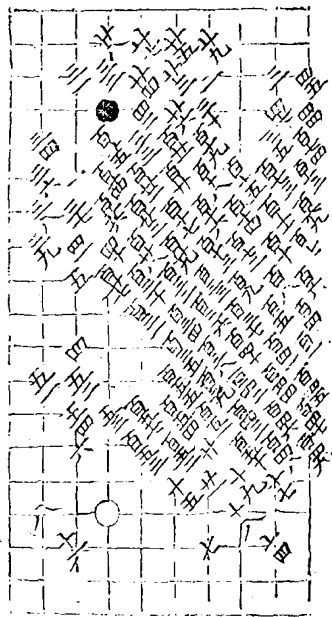
十八同十四

演武部

凡五局主先舉征吉无咎

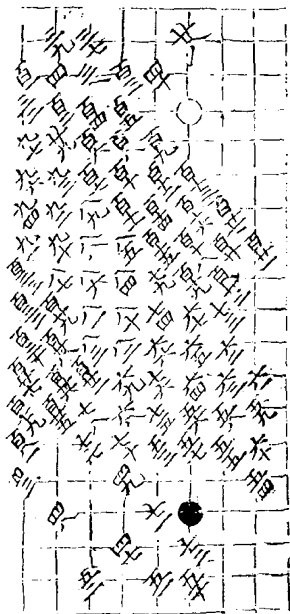
第一局一百九十五舉以下三六臨四宮





百五八同公七

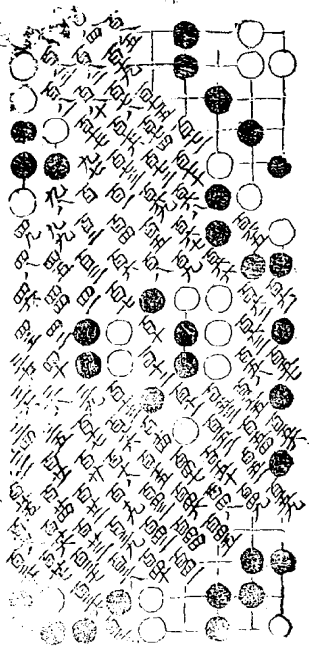
第一局二百三舉

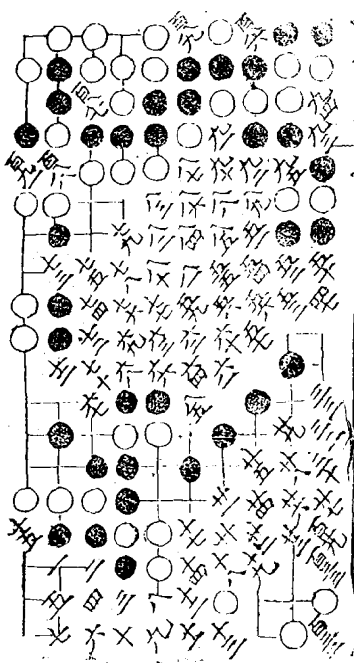


百廿四同六九



第三局三二臨八宮一百九十一舉



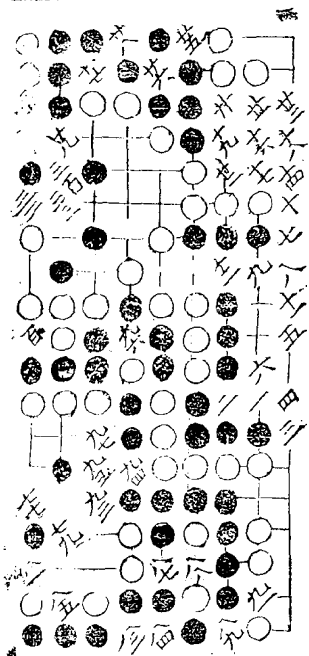


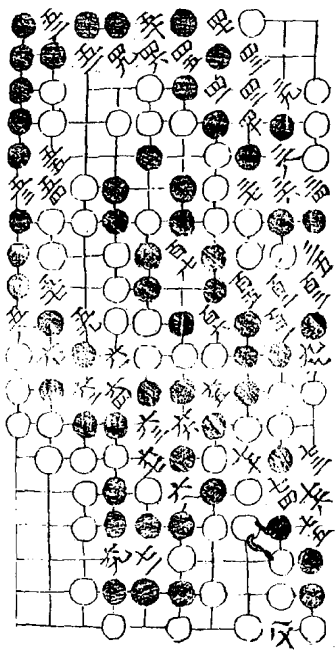
十六同三
 九六同九三
 百三四同百三一

田空同百五十
 百益同百六
 百九十在二四

適八
 三十三

第四局二八臨七宮一百七舉



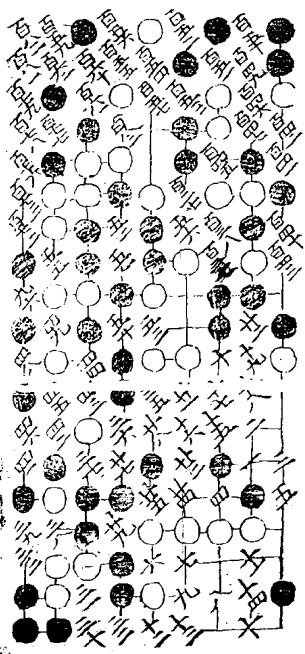


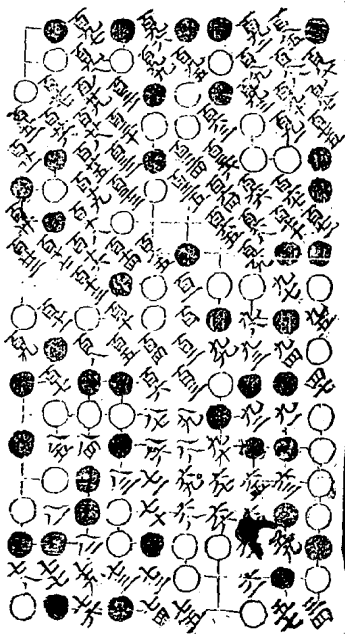
十三同七
 十五同八
 廿同九
 四同四
 四八同四五
 五同五三
 七二在空
 七八同五
 八二在十
 八六同八三
 九十在四
 九二在留
 九八在死
 百四同百

第五局二六臨六宮一百九十九舉

廿六同廿三 四十在企 五四同五一

五八在十二 六二同五七 八十在二





百一十同百五
百四六在三四
百八同百七

百廿四同百廿
百五八在一五
百八四同百九

百四四同百四一
百七四同百七一
百九四同百九

五八卷凡三百八十四局

旌德汪諒鳩工鏤梓