

秋

仙

遺

譜

秋仙遺譜前集六卷目錄

太極圖 十九變

斬關 十三變

鎮神頭 十變

勝邊勢 十一變

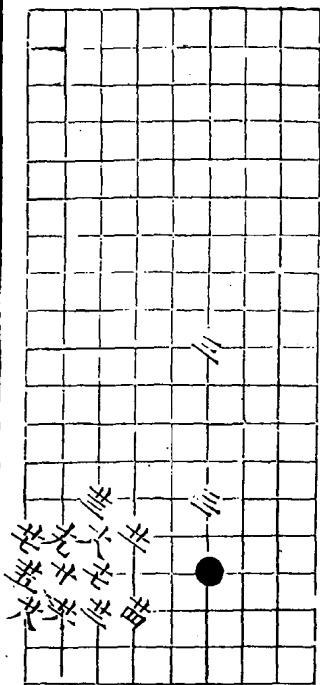
賈玄勢 二變

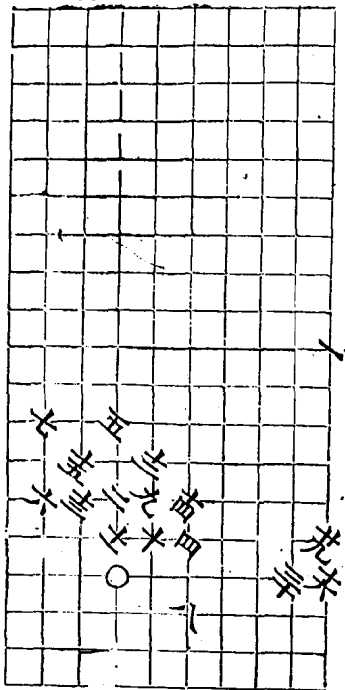
挑戰 十九變

守城 三十二變

太極圖共三變

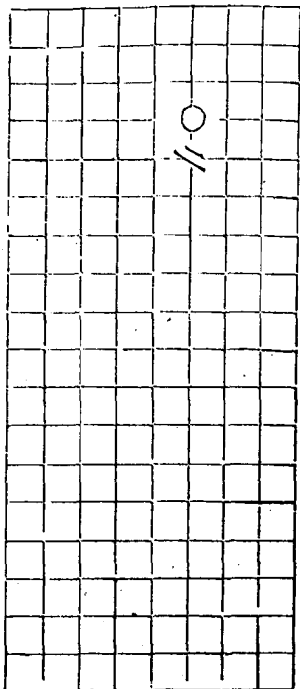
第一變白取勢三着



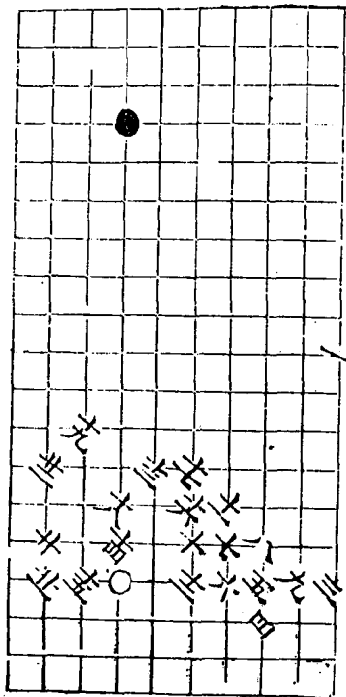


二變

三着

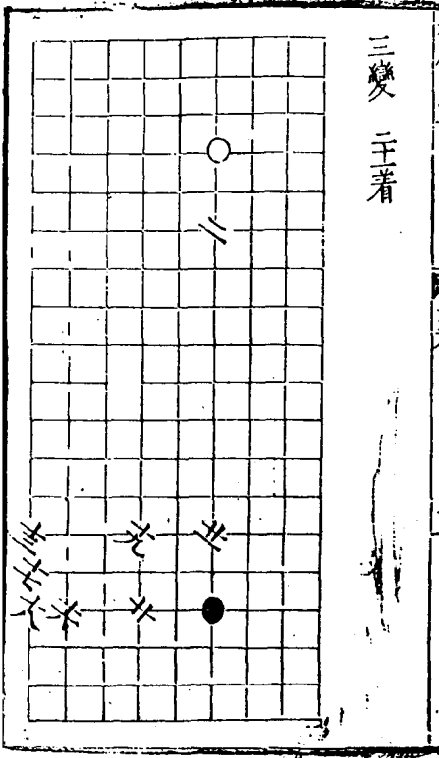


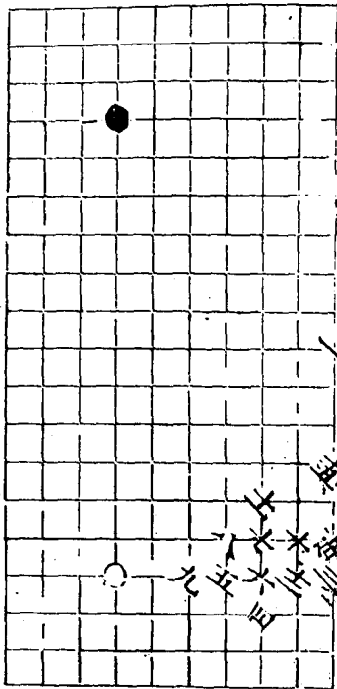
二十七着



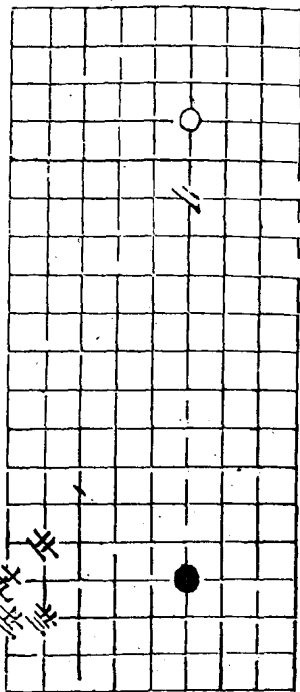
三變

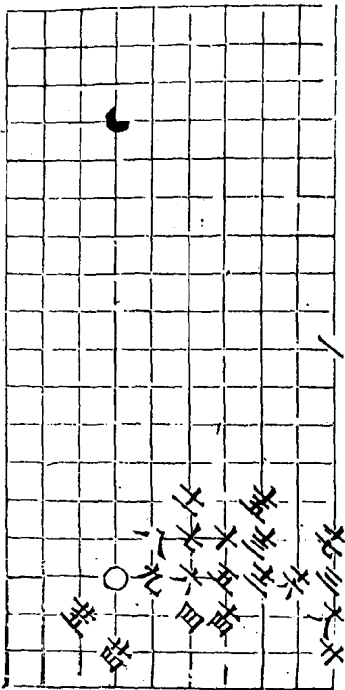
王著





四變 白取勢玉著

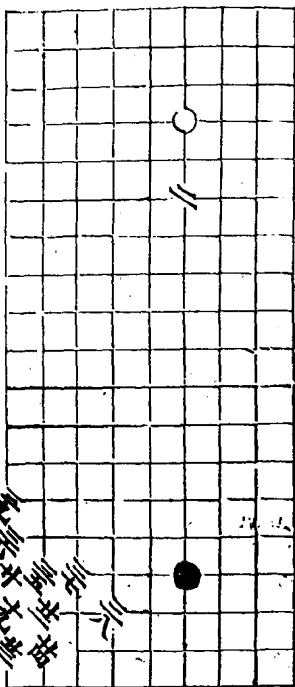


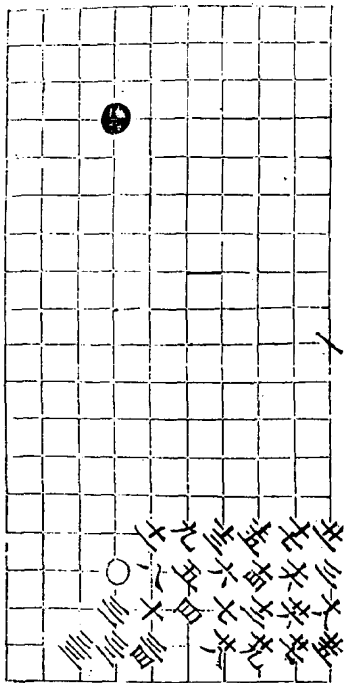


五變

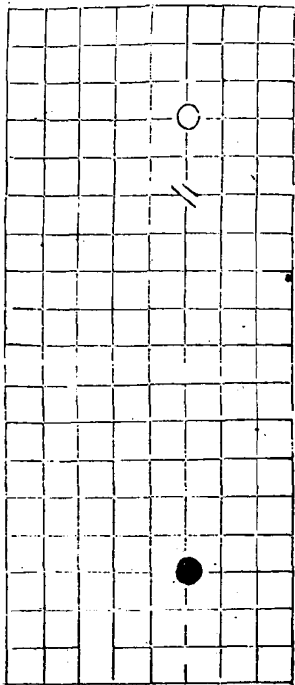
三九着

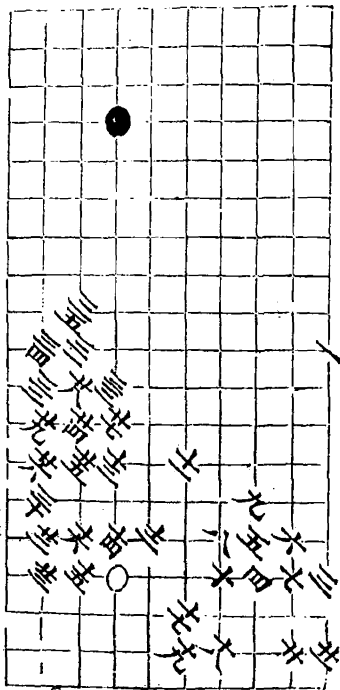
三同七





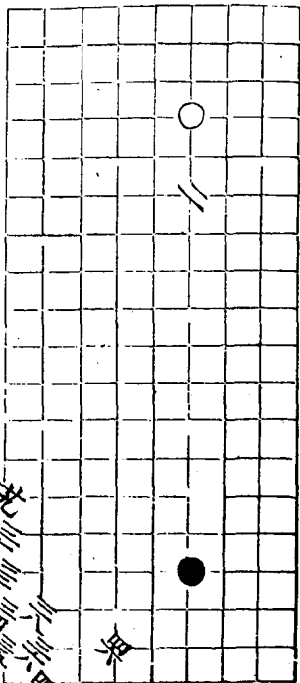
六變 三五着



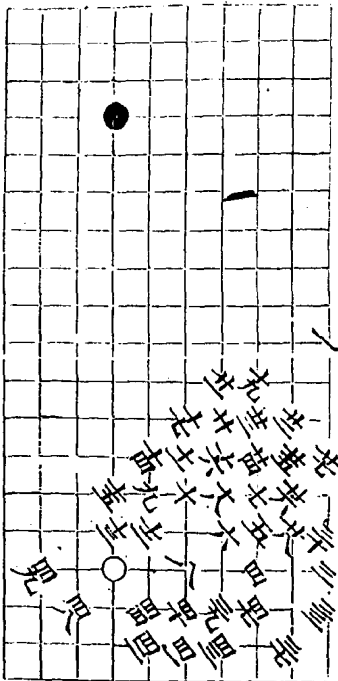


七變

四九着

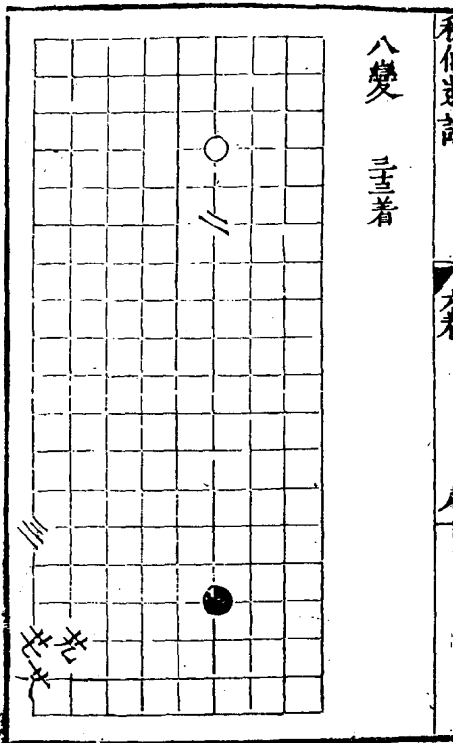


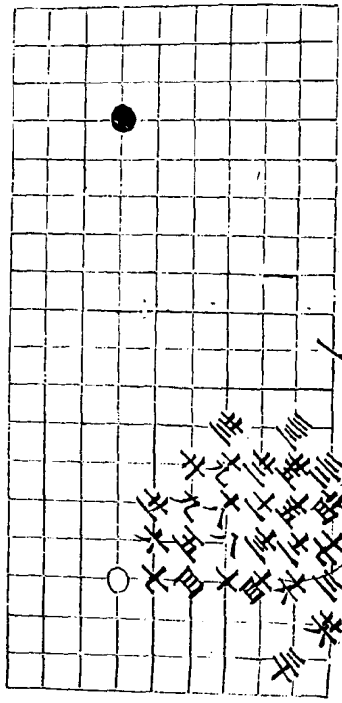
老川仙遊詩



八變

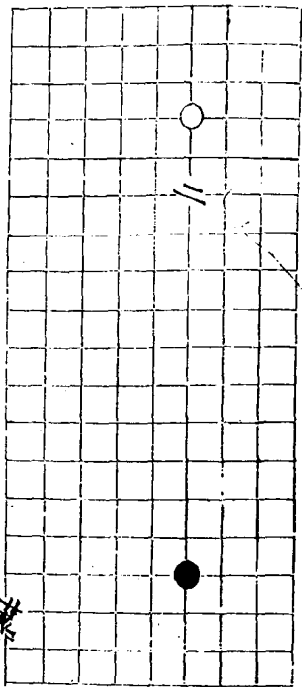
三五着



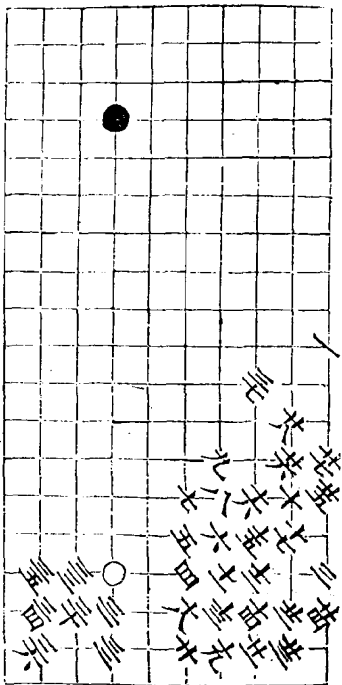


一
 十
 九
 八
 七
 六
 五
 四
 三
 二
 一

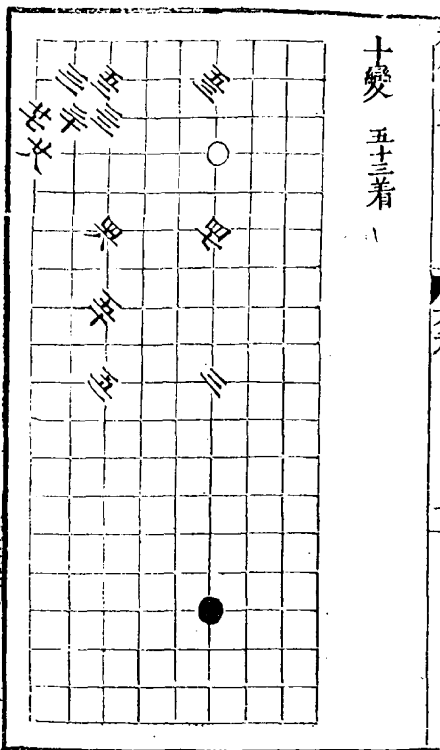
九變 三七着

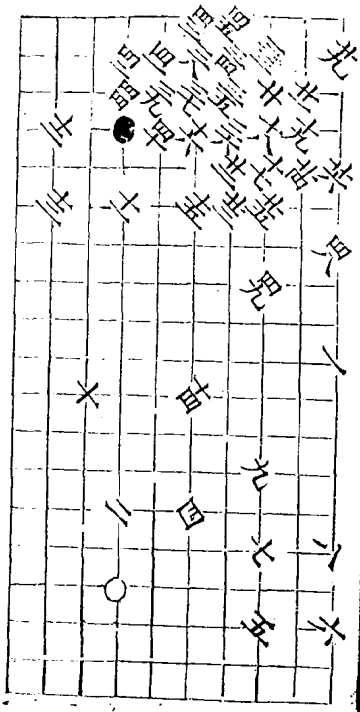


九

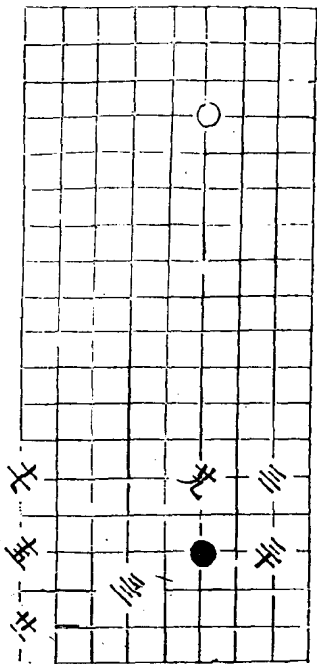


十變 五十三着



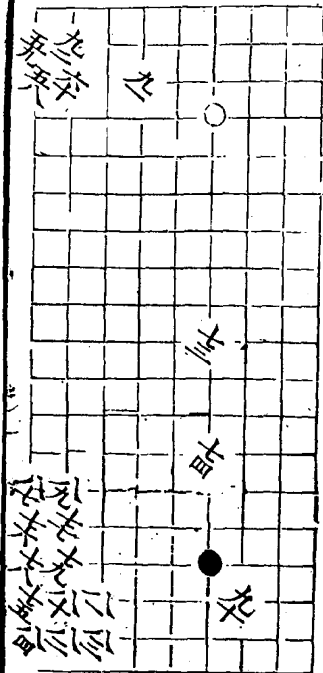


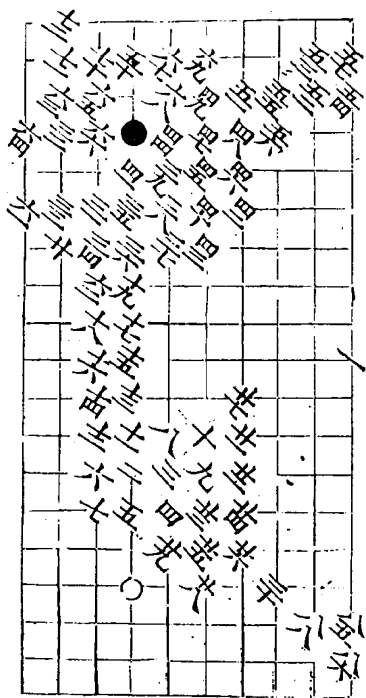
七變 五三着



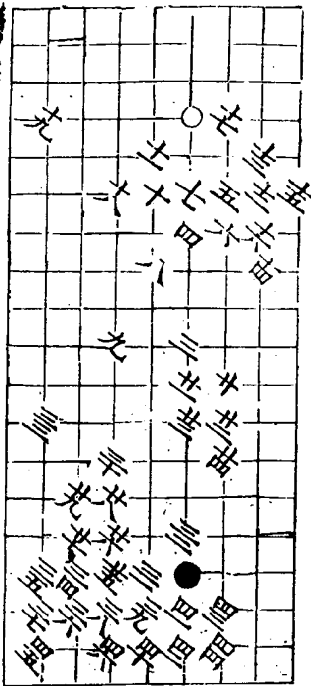
三變

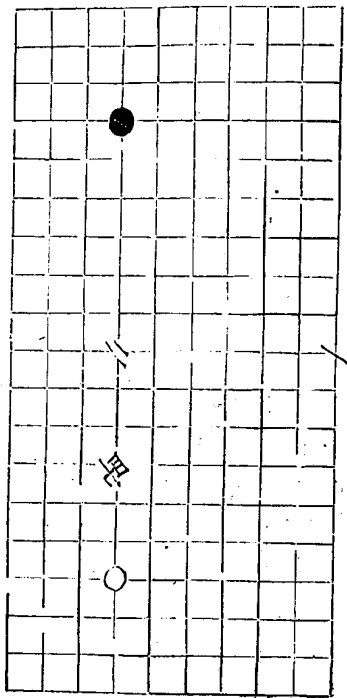
白勝九士着



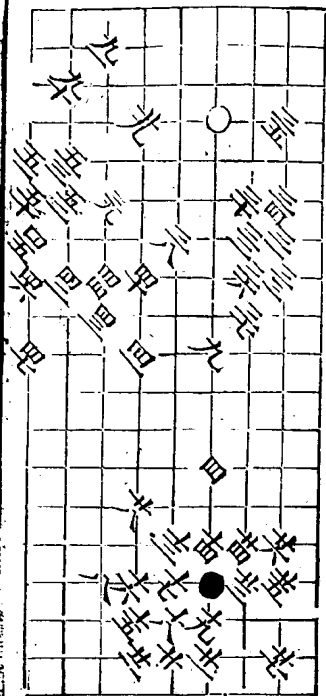


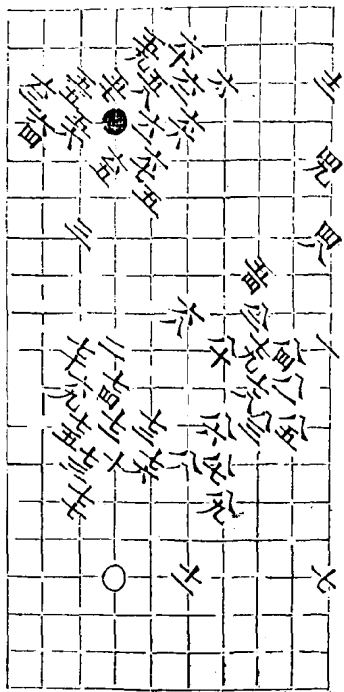
十四變 白勝黑着





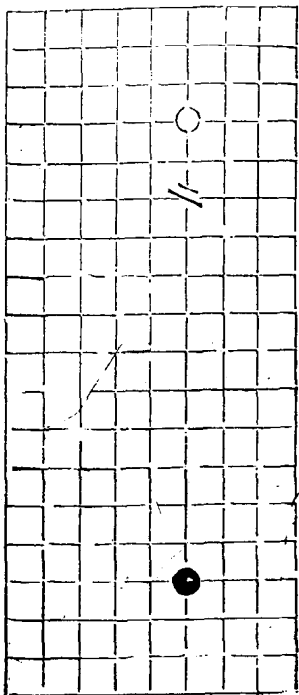
十五變 白勝九十二着

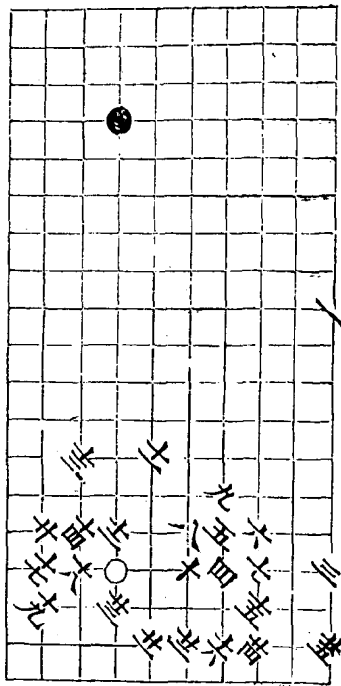




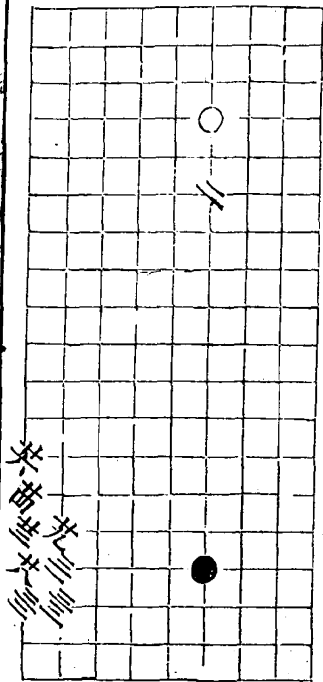
十六變

莖着





十七變 三十七着



一
持

持

持

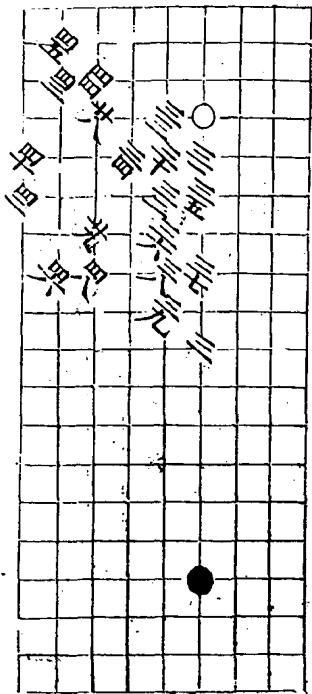
持

持

持

持

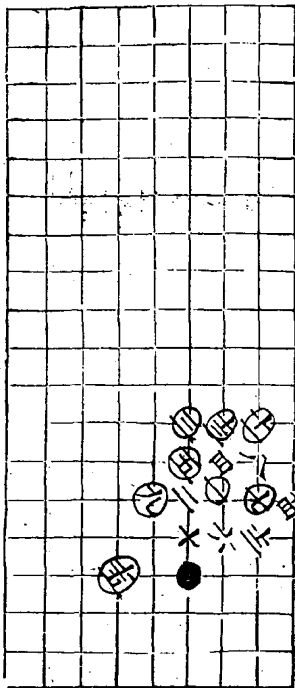
大變 電兒着



斬関共主變

第一變

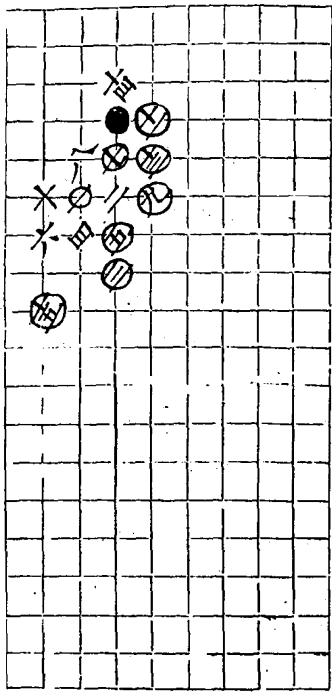
白取勢主着



第二變

自取勢十五着

士同三

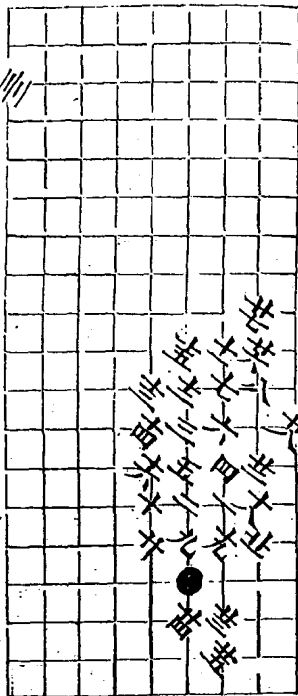


三變

兩分壬八着

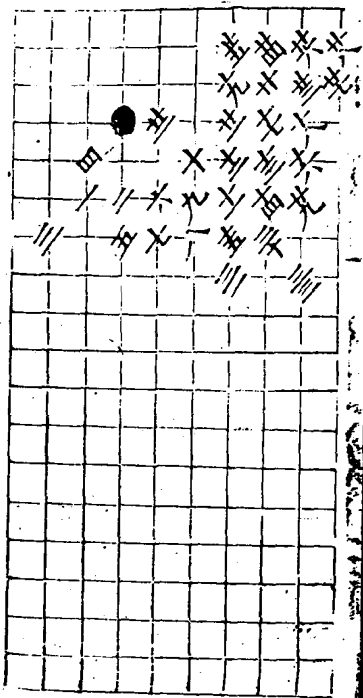
十七同三

三三

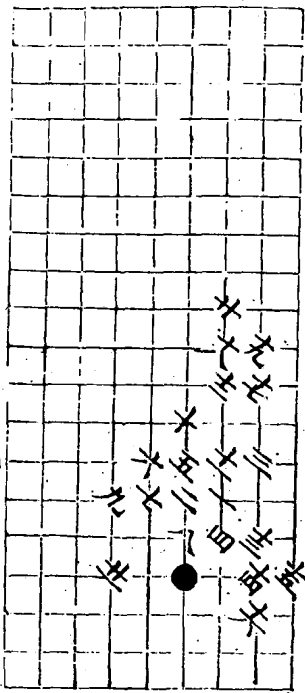


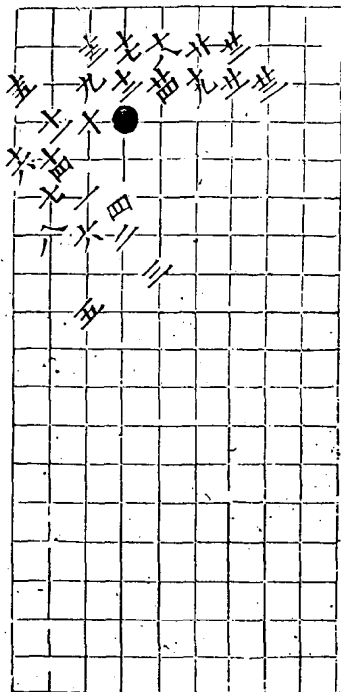
四變

白勝三十三着



五變 兩分仕着

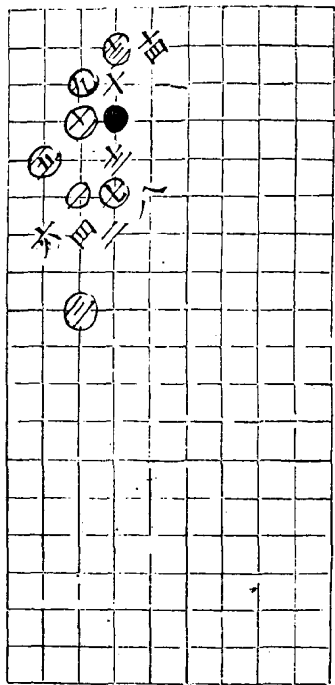




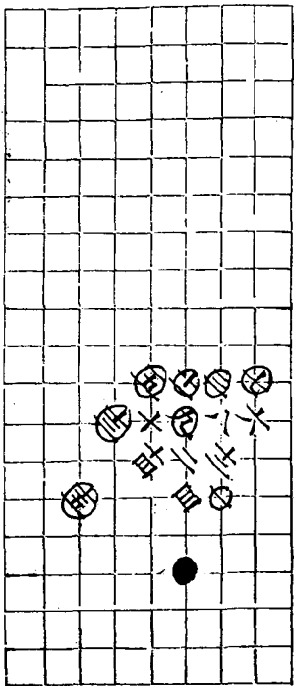
六變 自得勢三五着

八變

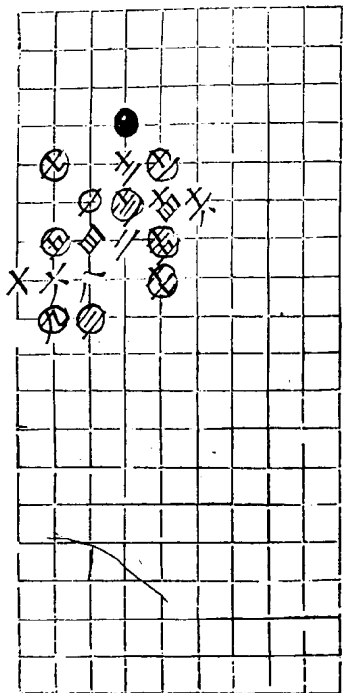
白取角古着



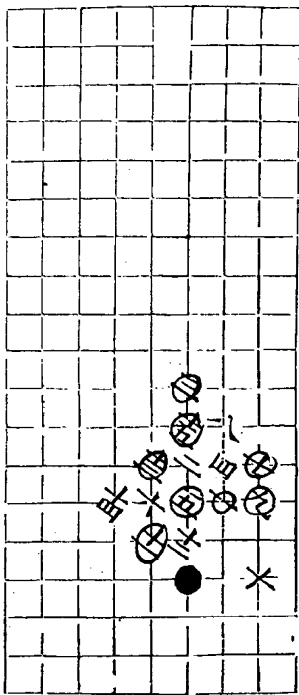
九變 白得勢十五着



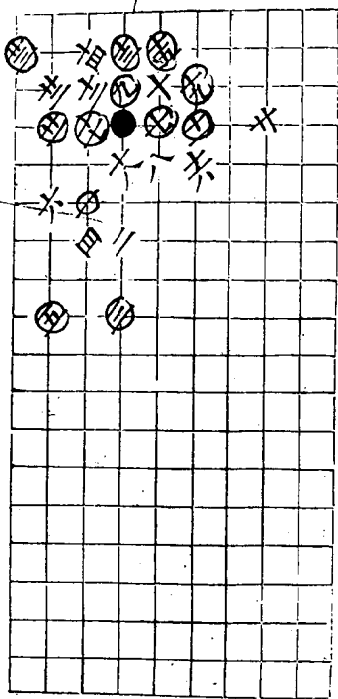
十變 白勝七着



士變 白勝五着



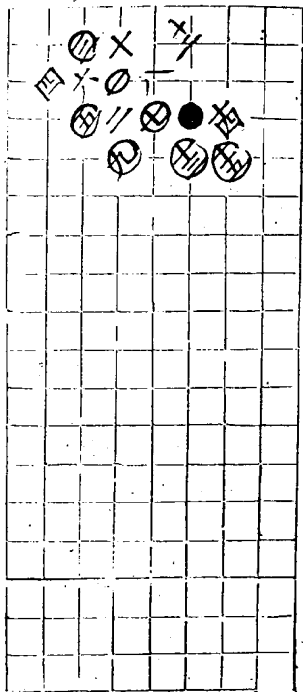
士變 白勝角三着



十三變

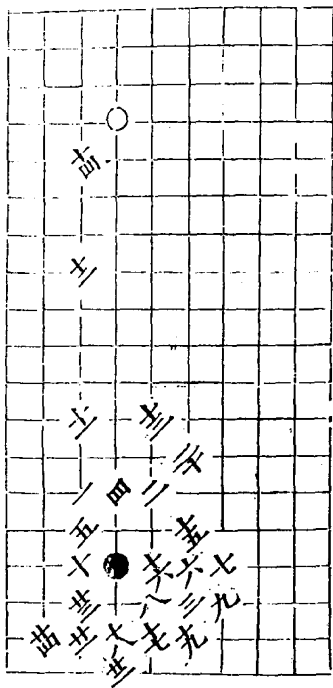
兩分十五着

十二回

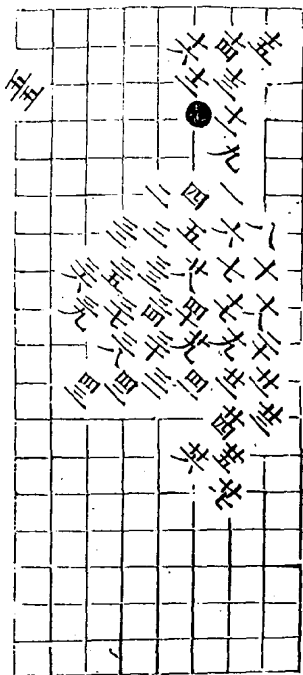


鎮神頭

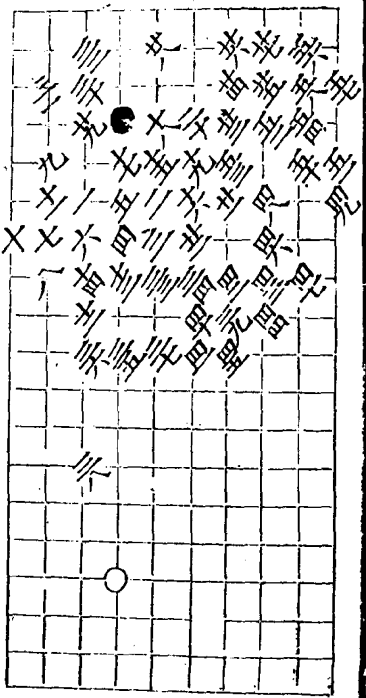
共十變 第一變 白雉勝二十四着



二變 白勝聖着 一子解二征



三變 白勝五六着

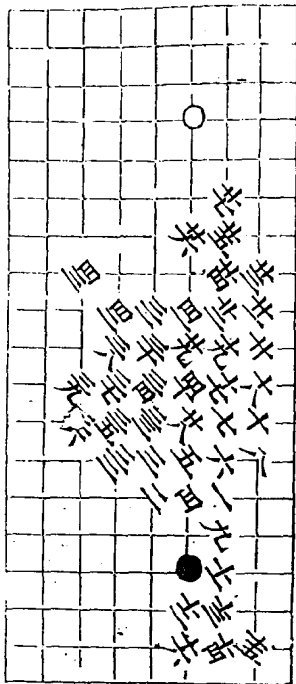


第四變

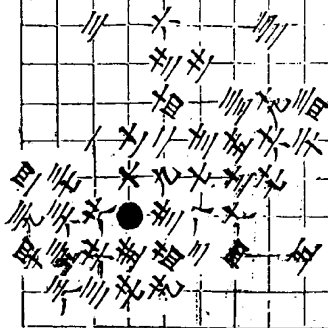
白勝三着

一子解二征

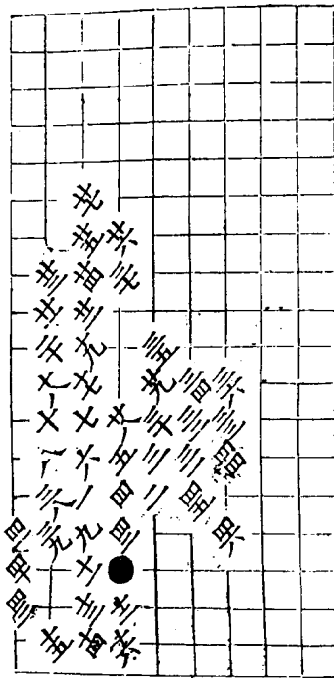
與三變差三着



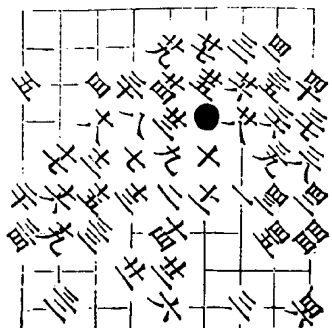
五變 白勝早着



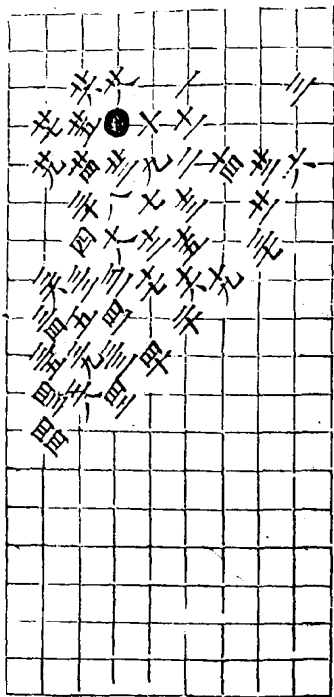
七變 黑勝單六着 成征



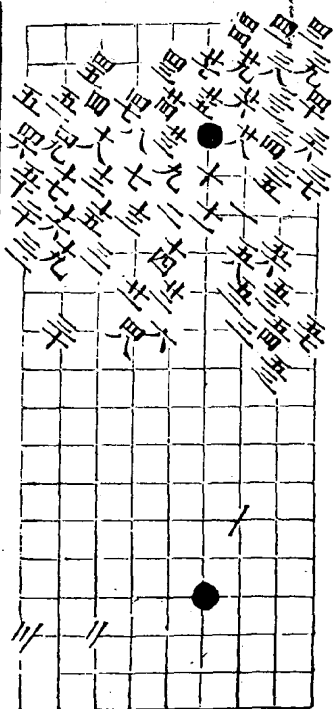
八變 黑勝四六着



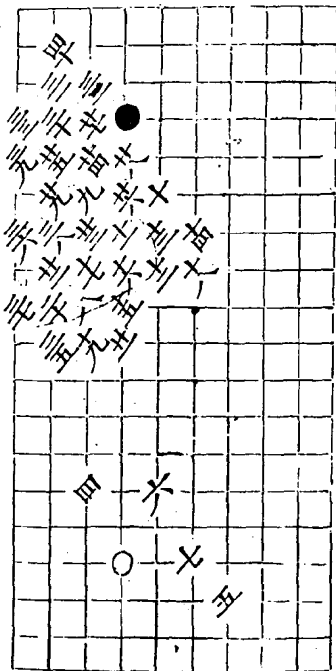
九變 黑勝四十四着



十變 兩分五十八着

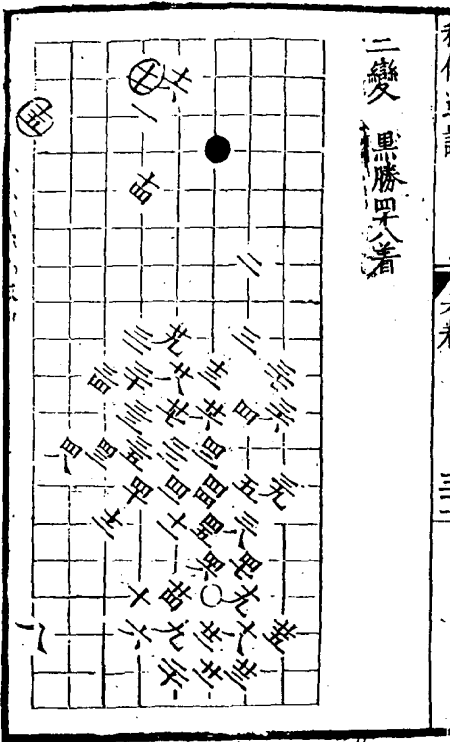


勝邊勢 共土變又 一變又 黑勝四十着

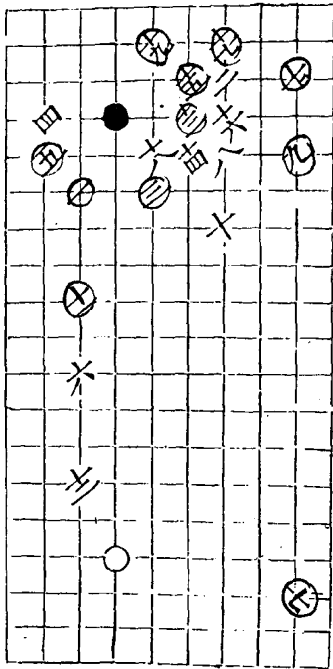


三十四同其

二變 黑勝四八着

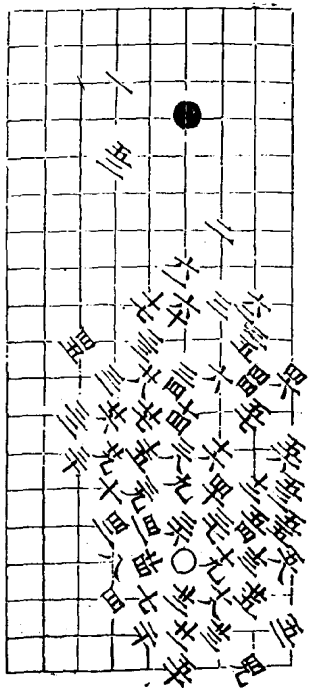


三變 自得勢九着

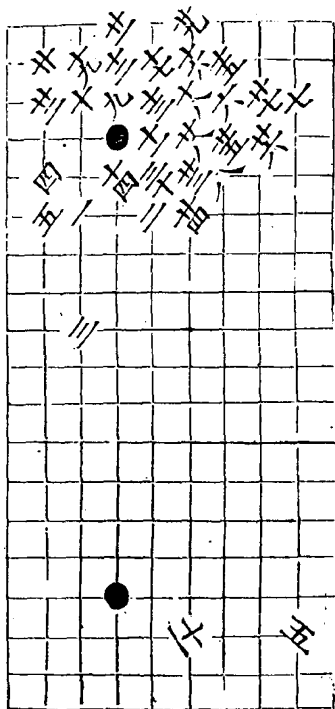


四變 黑得勢空三者

四三同六 四同七 四八同廿 五九同五



五變 兩分三十着



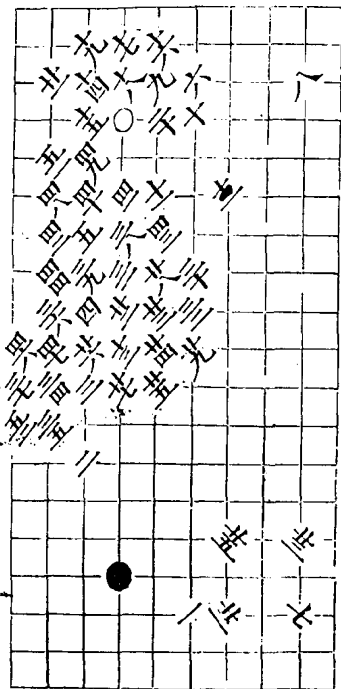
六變 黑勝五四着



七變 黑勝五三著

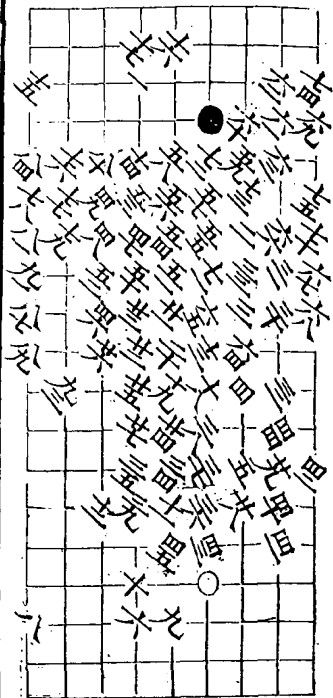
三五同出
五同出

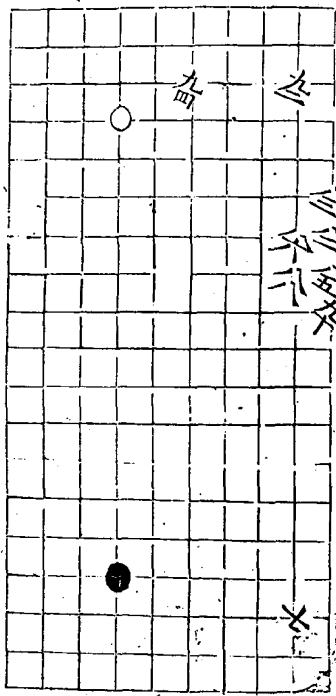
四五同六



八變

黑勝九十四着



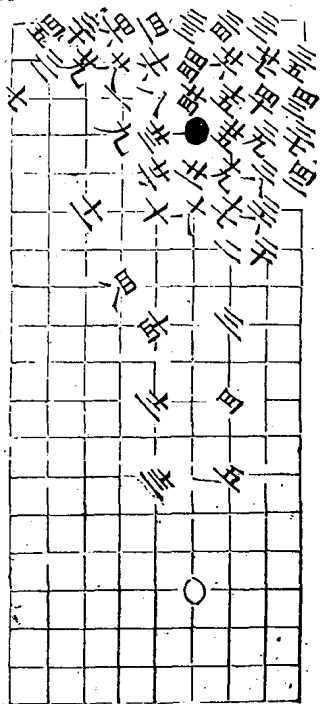


白
六
六
六
六
六
六
六
六
六
六
六
六

六

九變 兩分四十八着

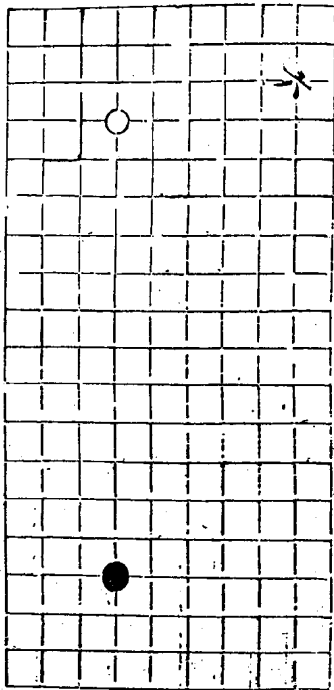
四十七同盟



承仙遺譜

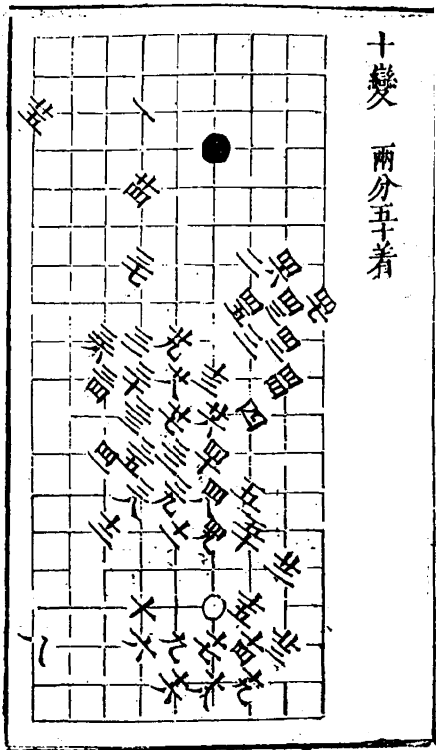
六卷

五



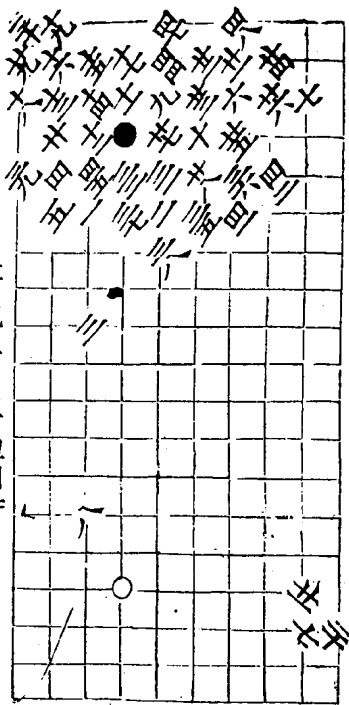
十變

兩分五子着



士變 白勝四九着

三四同九
 三四同七
 三四同五
 三四同三
 三四同一

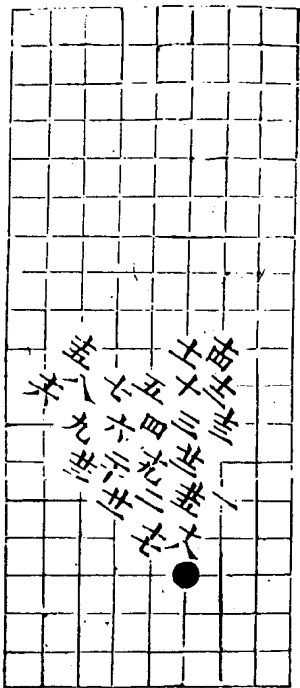


賈玄勢

共二變

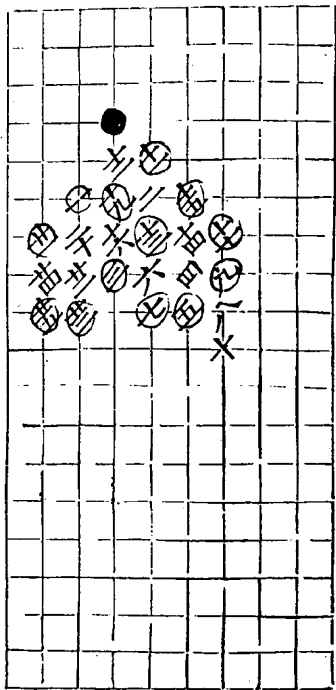
一變 白勝三五着

苗同九



二變 白勝三五着

大同吉

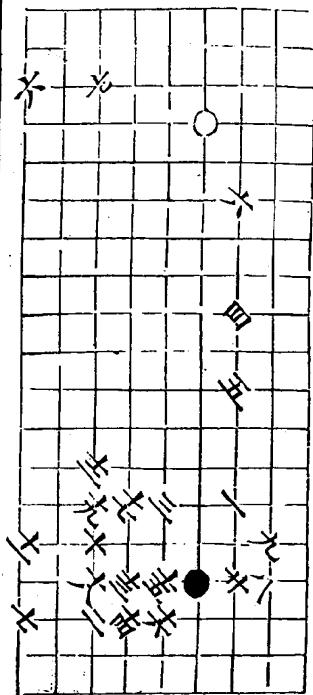


挑戰

共九變

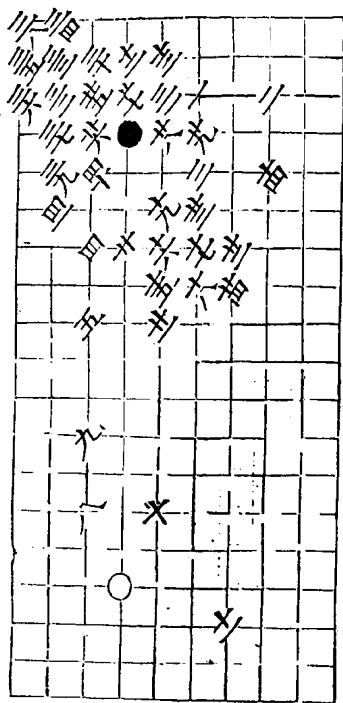
第一變

白勝三着



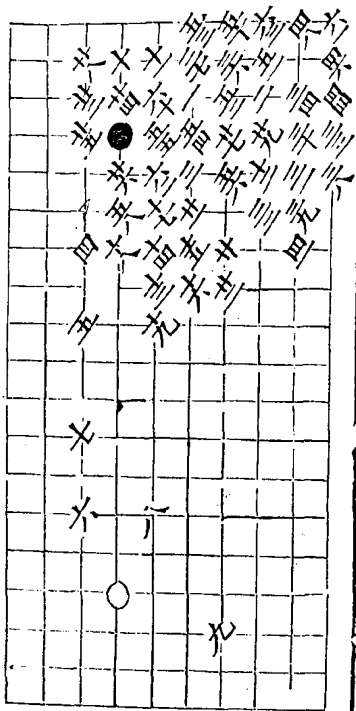
第二變

自勝四十一着

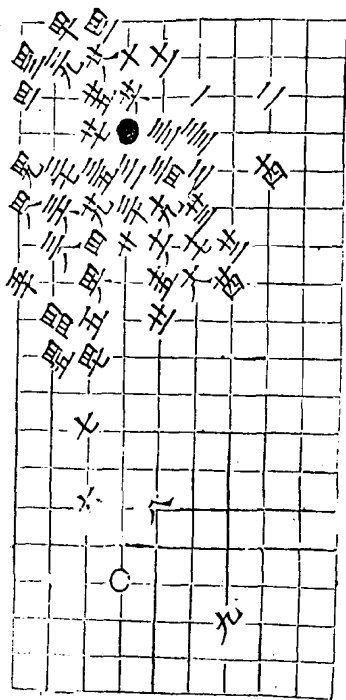


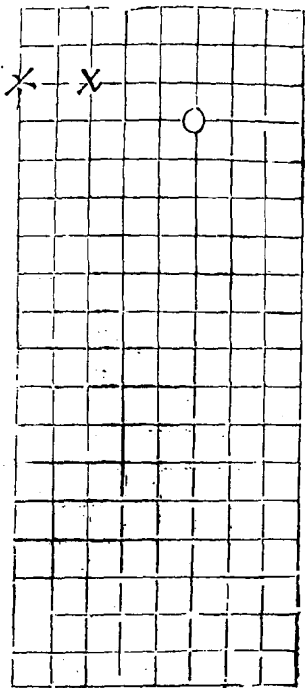
第三變 自勝左三着

五七同五四

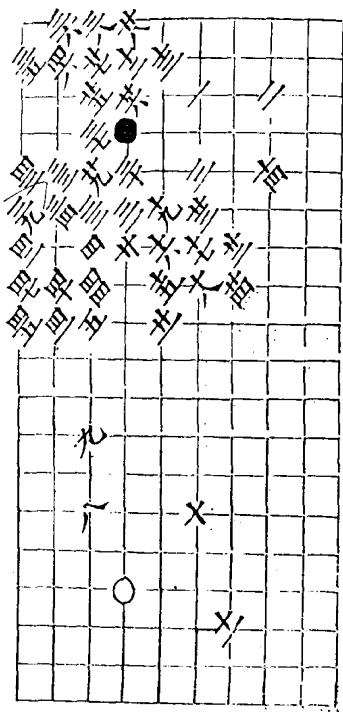


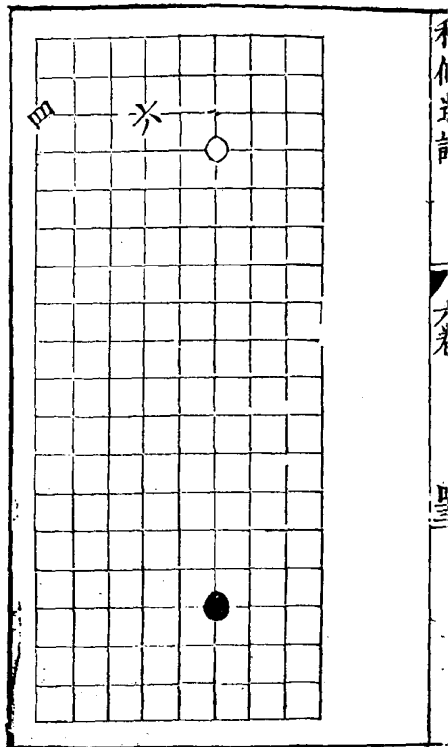
第四變 白勝手着





七變 白勝四七着

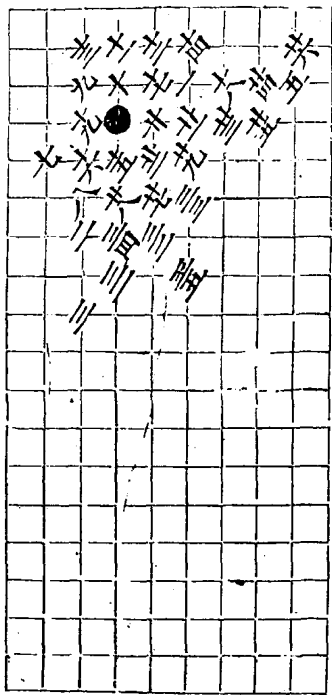




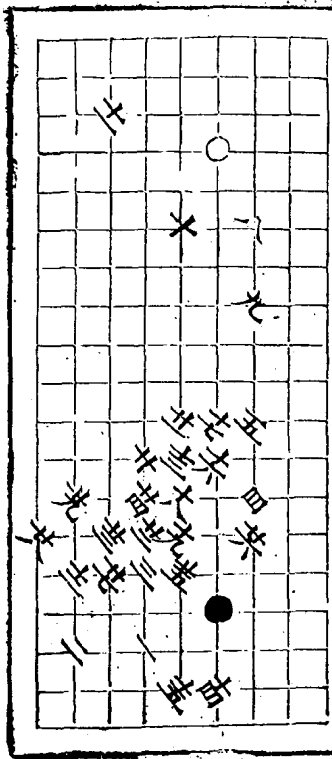
八變

自勝三五着

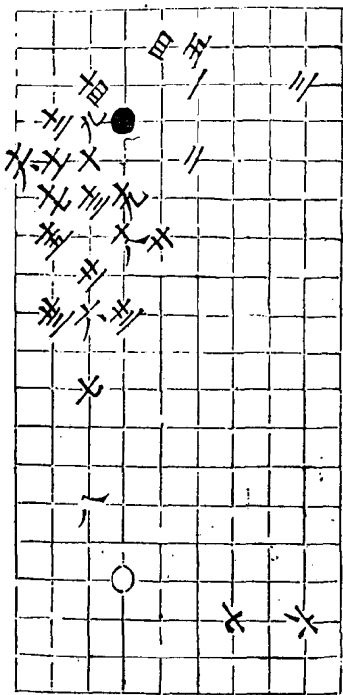
三子同五



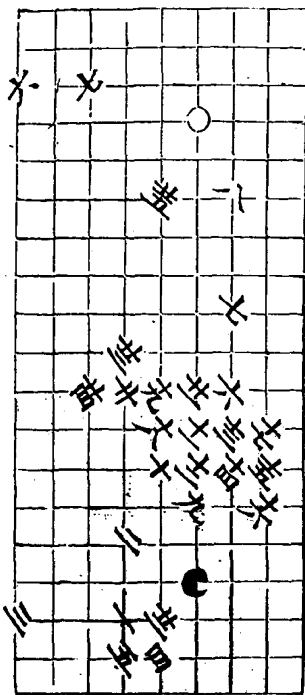
九變 自勝三九着



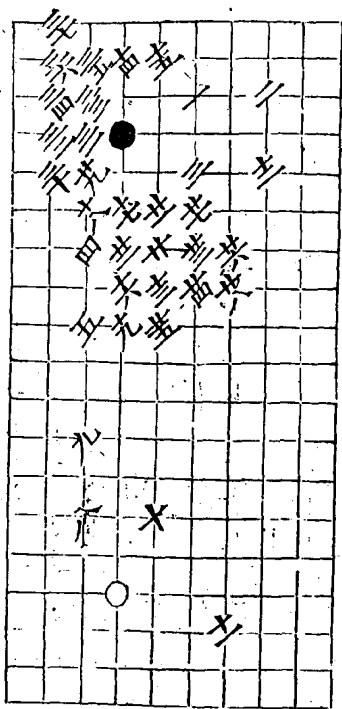
十變
自勝玉着



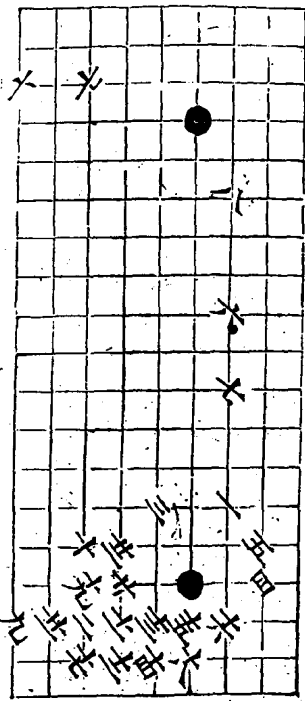
十二變 兩分莖着



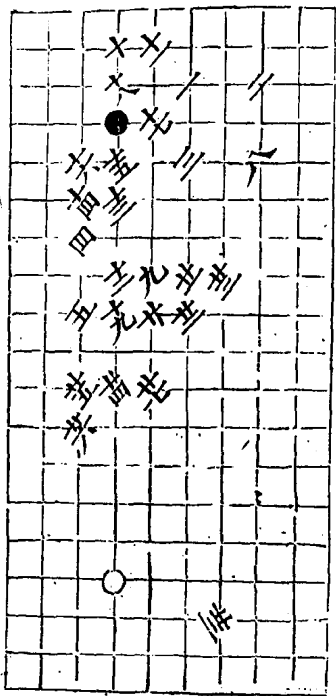
士變 白勝三十七着



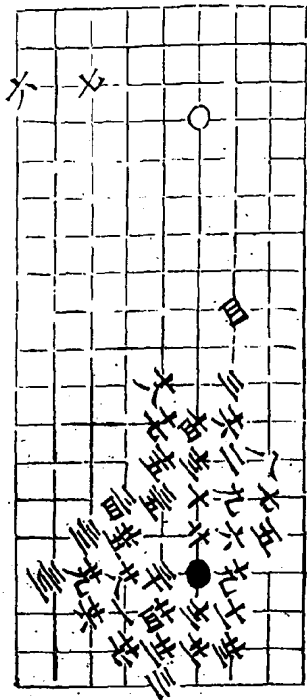
三變 白勝三着



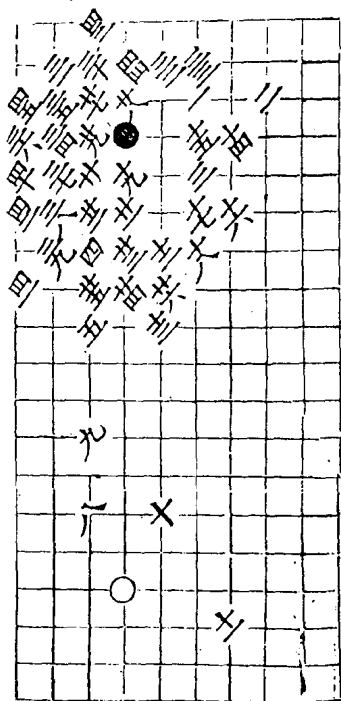
十四變白勝于七着



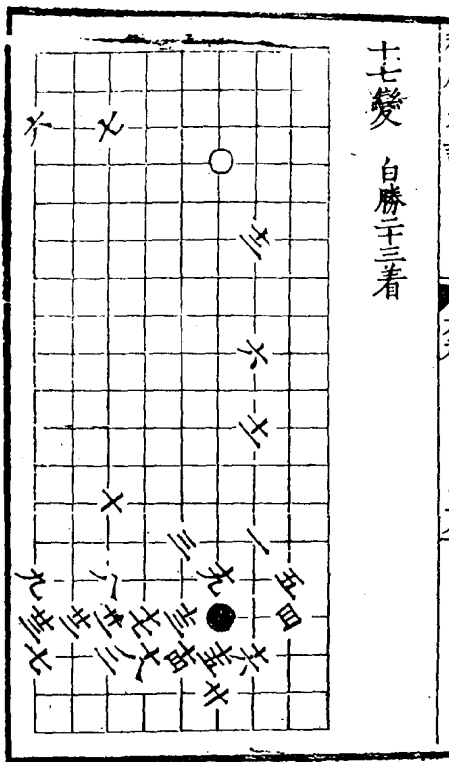
十五變 白勝三五着



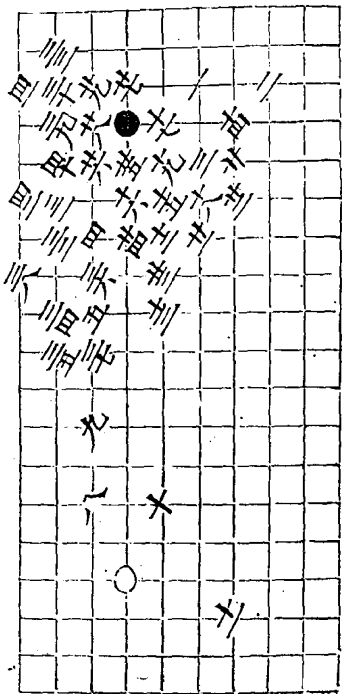
十六變 白勝四五着



十七變 白勝二十三着

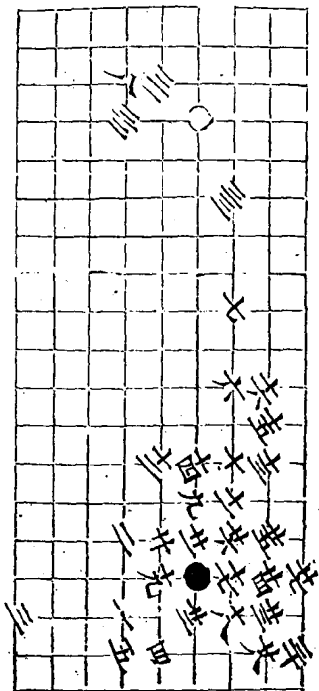


十八變 白勝三着

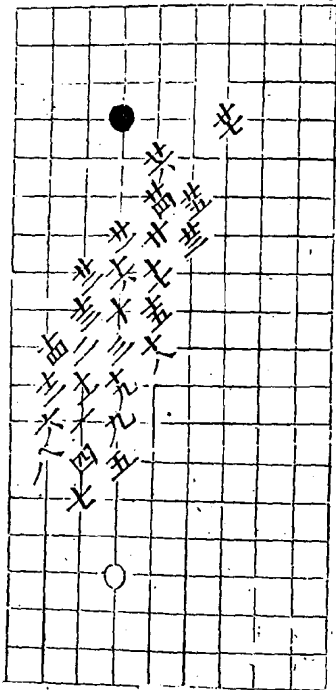


十九變 白勝三着

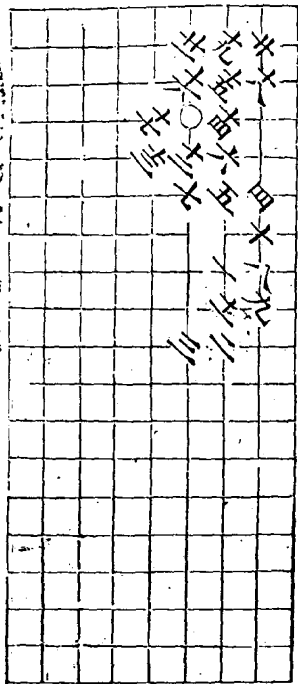
九同七



三變 白取勢于七着

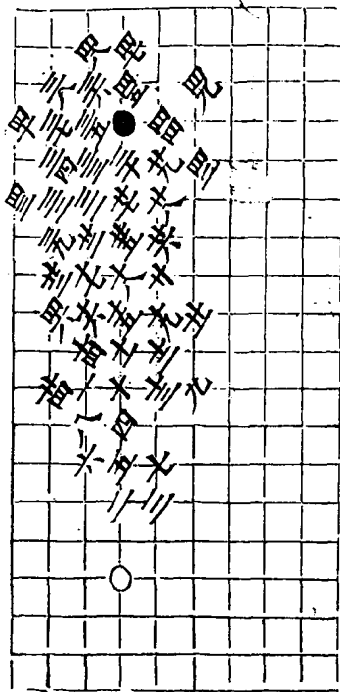


凶變 白取勢三着



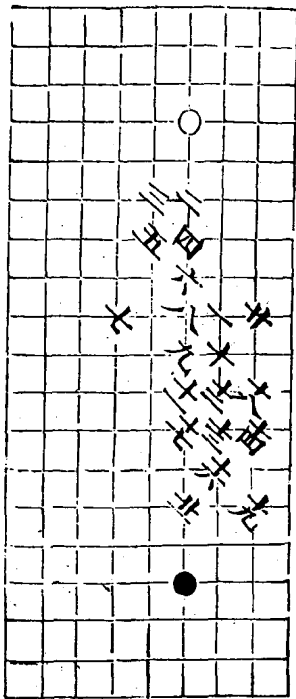
五變 自勝四九看

四同廿

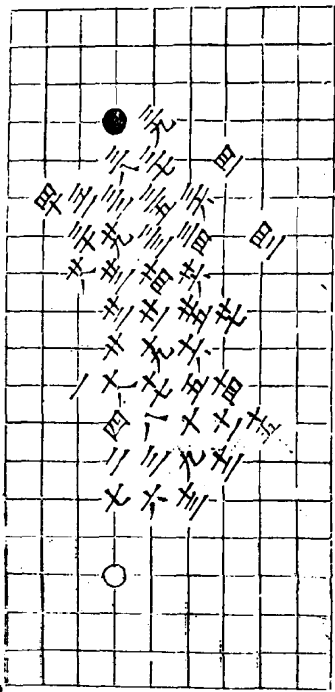


六變

自取勢王着

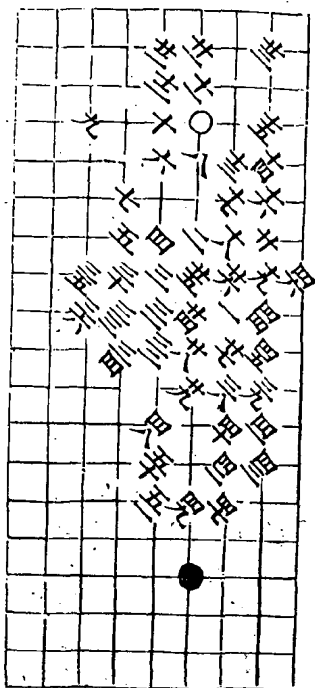


七變 白取勢四十二着



八變 白勝五子着

三七同三



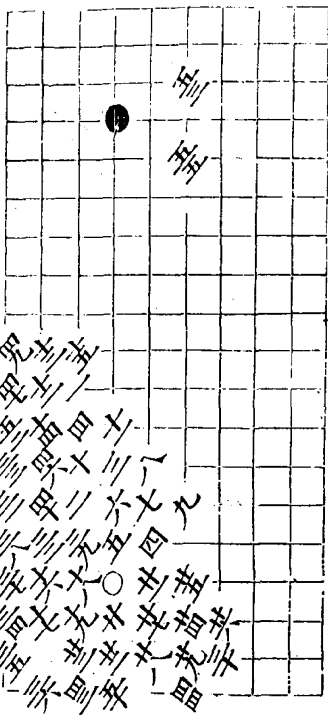
九變

自得藝十五着

四三同三四
五一同三七

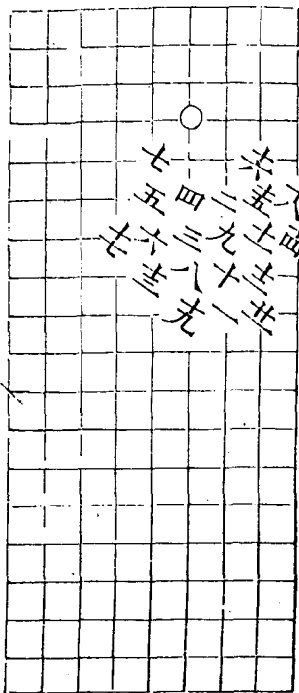
四五同五七
五四同三四

四八同三四

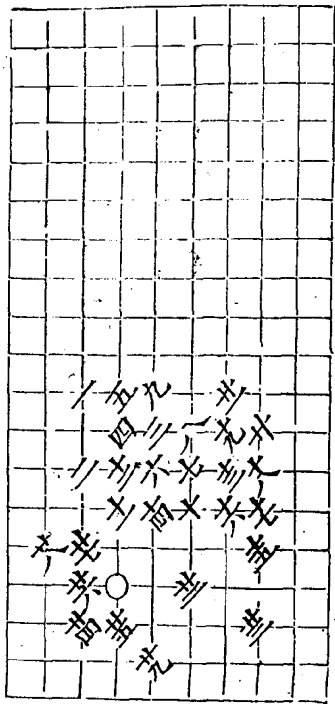


十變 兩分自得勢三着

手同六



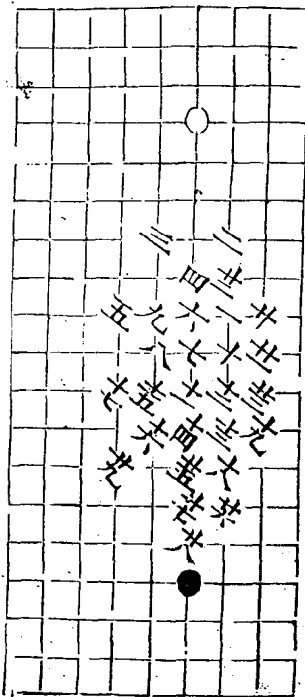
十二變 自勝三九着



十三變

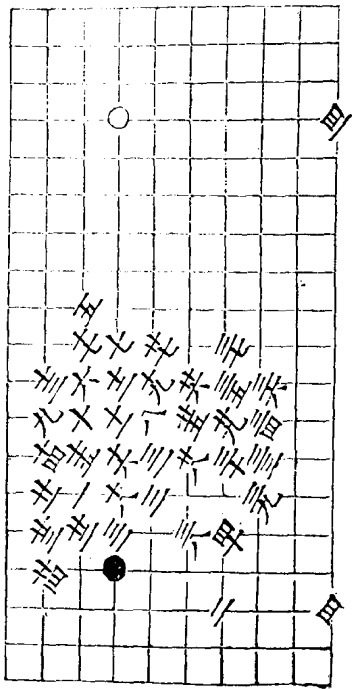
自勝于九着

二四同一

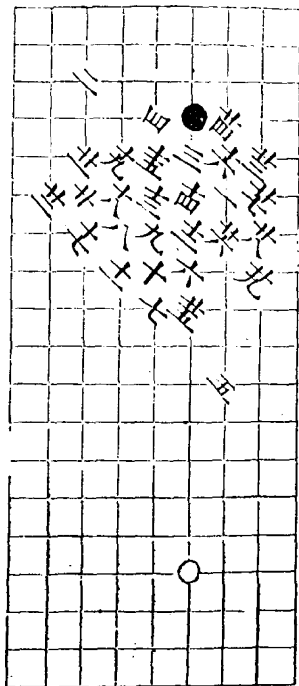


十三變 白得勢四十一着

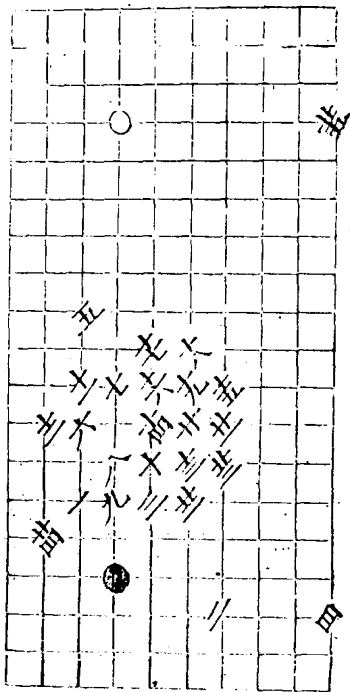
廿四十一



十四變 白勝二九着



十五變 自勝三五着

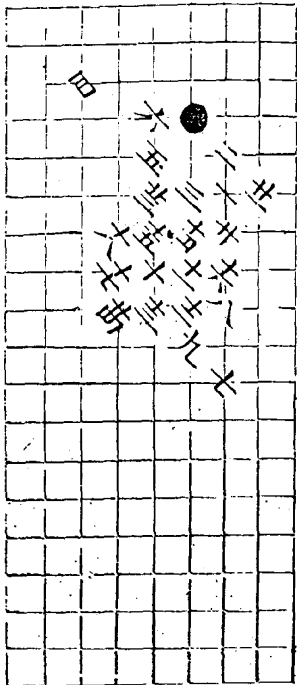


十六變

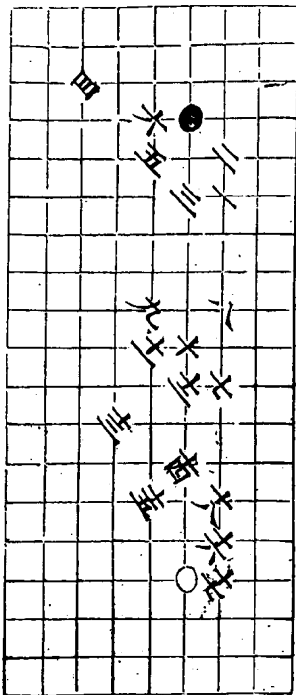
白勝三五着

九同土
廿五同土

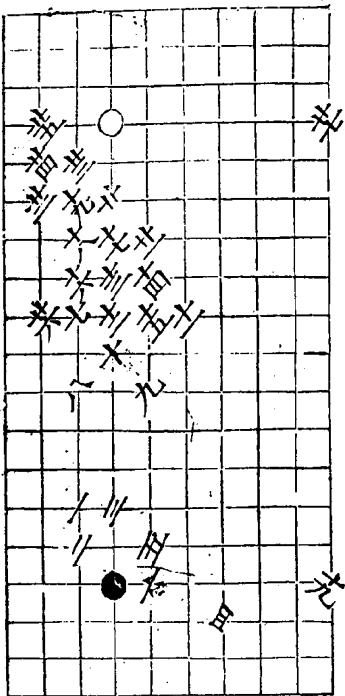
廿同十



十八變 白取勢十九着

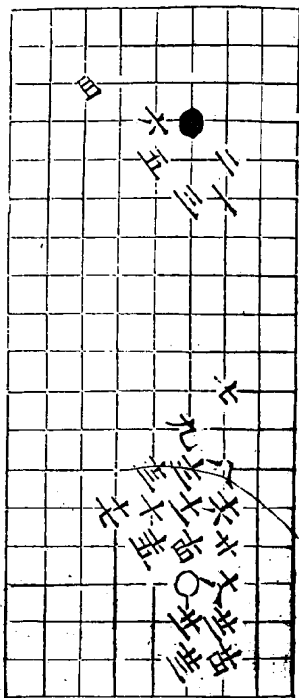


十九變 白勝七着

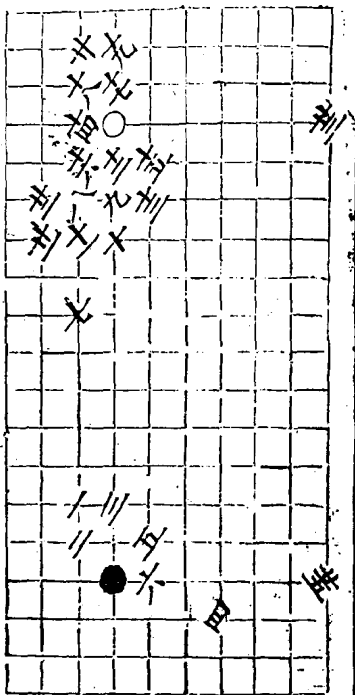


千變 自取勢于玉著

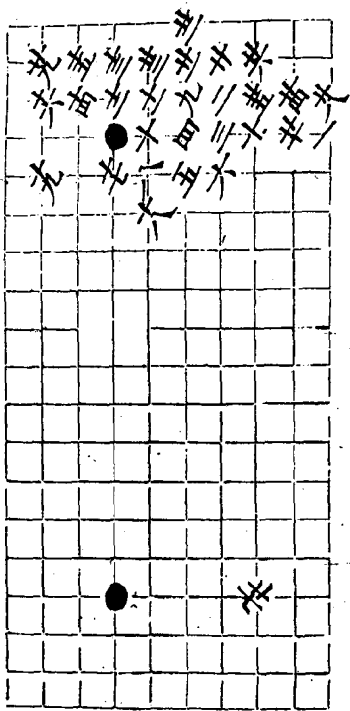
九同土



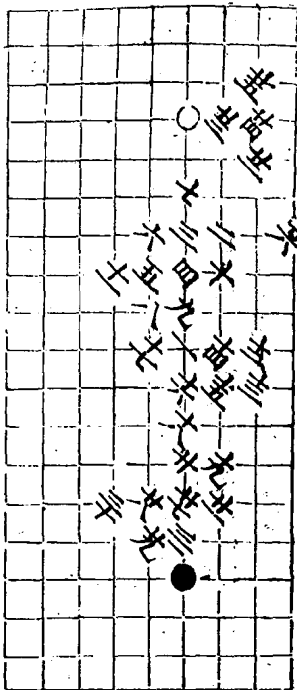
廿變 自取勢二三着



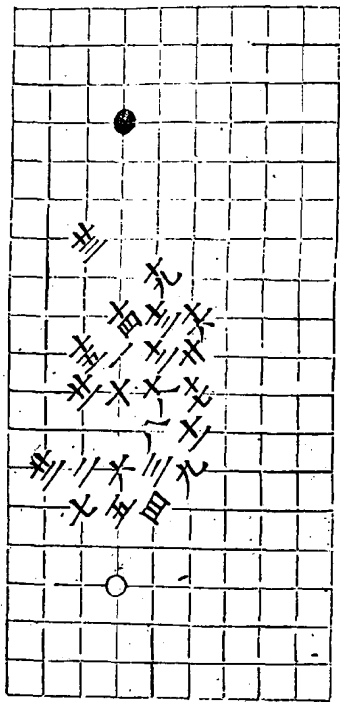
三變又 自勝至九着



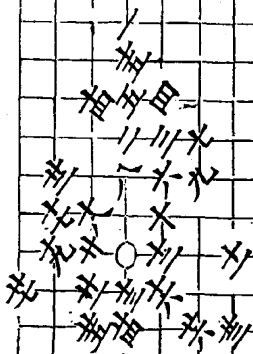
十四變 自取執事三着



廿變 白勝三着



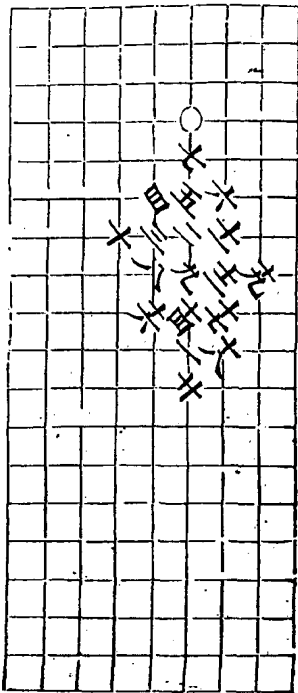
廿七變 兩分二十七着



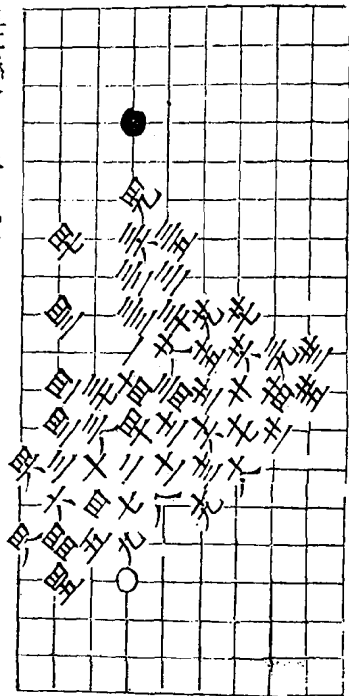
女變

自得勢子着

言三十五同三



三王變 白勝單九着



三三變 白勝四七着

