

秋

仙

遺

譜

秋仙遺譜七卷目錄

要遞 五變

背擊 共二十變

正兵 共二十變

鉄重關 十四變

破鉄角 六變

平角圖 九變

短弩箭

平關斜飛角 十一變

飛關角 四變

定光圖 五變

垂鈎角 二變

葫蘆套 二變

玉屏風 二變

飛捺角 三變

走盤角 二變

玲瓏布置 四變

解連環 三變

劉得顯局圖

王友諒局圖

晋士明局圖 二變

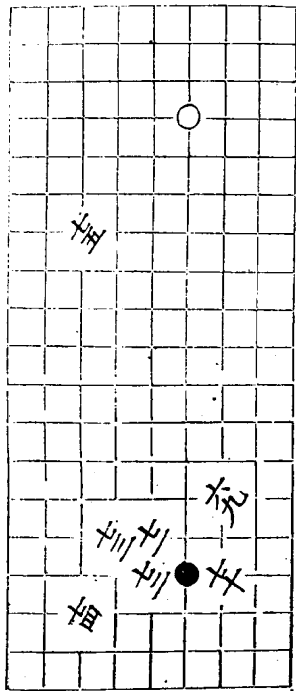
黃保破角圖

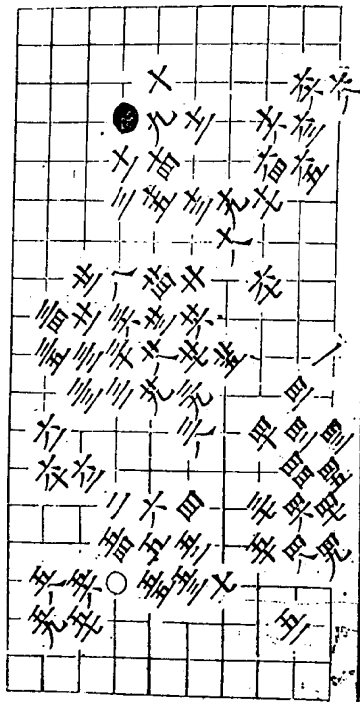
要遮

共五變

第一變

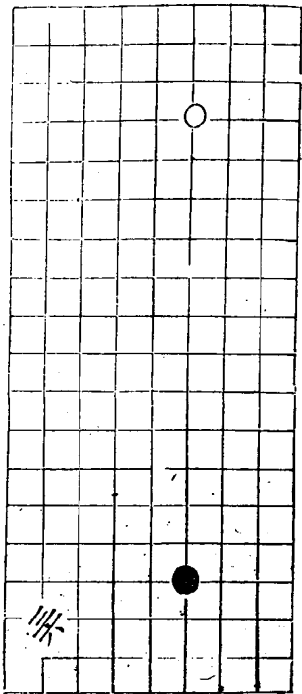
七十五着

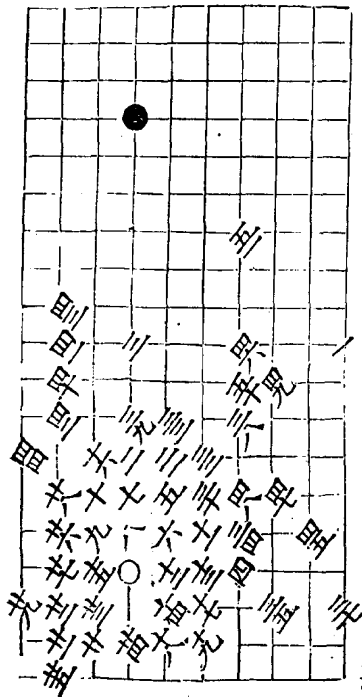




第二局

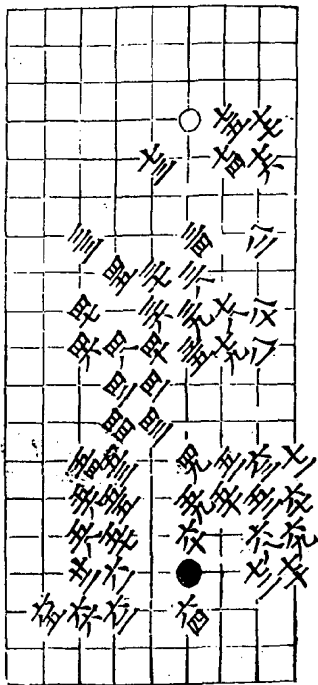
五子著

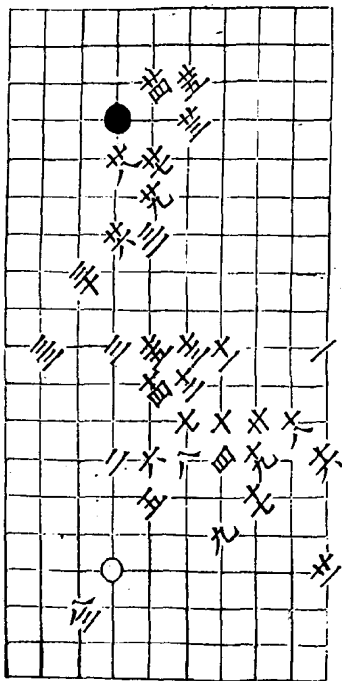


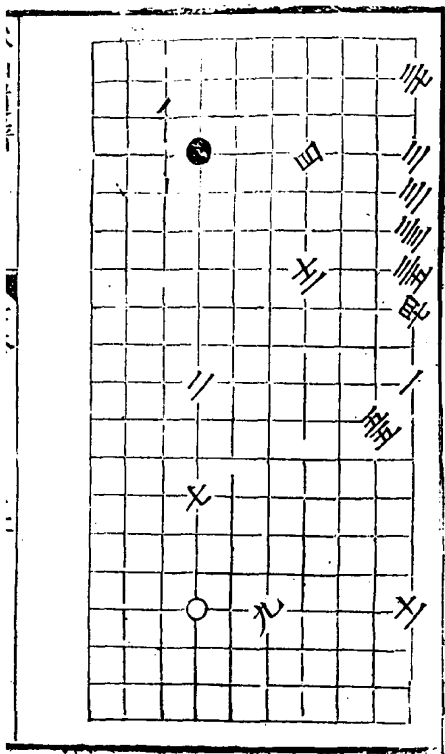


第三局

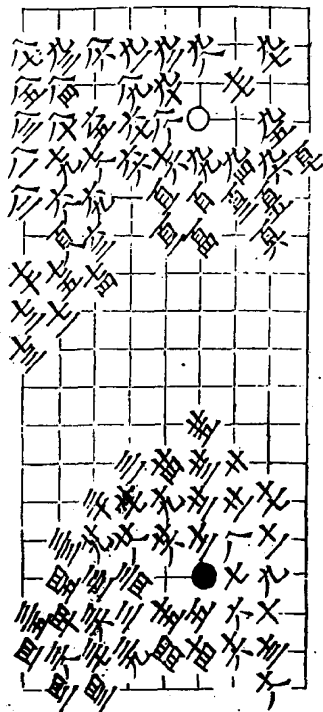
全三着







第五局 一百八舉



梅

荷

○

二

一

兜

六

四

五

四

五

果

○

本

五

五

五

五

五

五

五

五

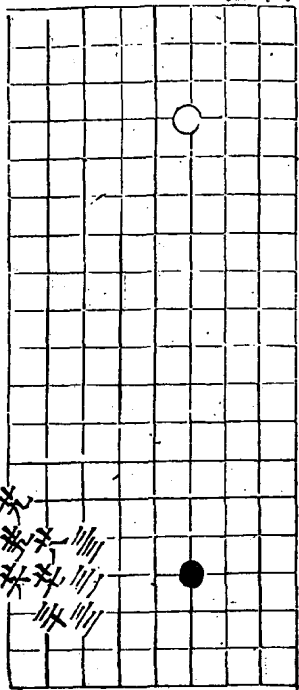
五

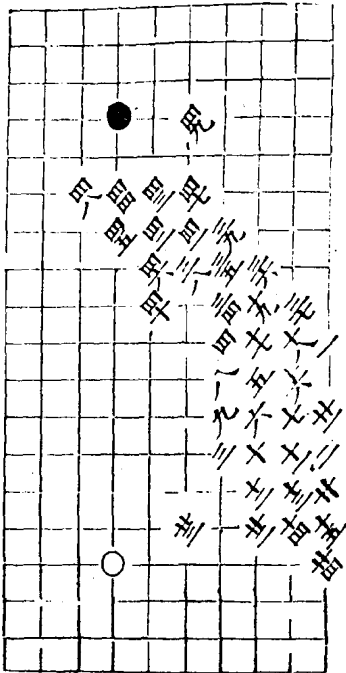
五

五

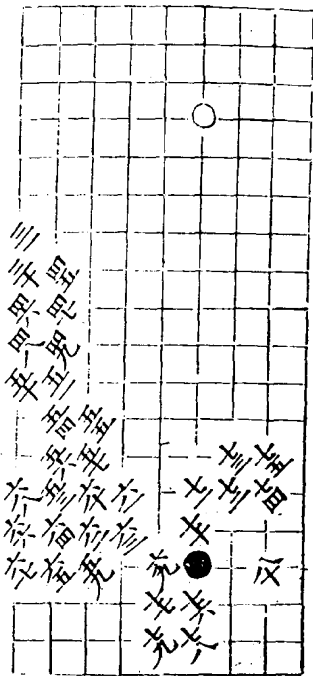
五

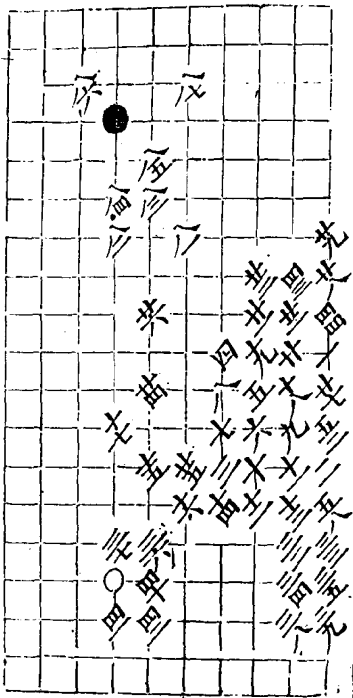
背擊一 莖局第二局 四十九着





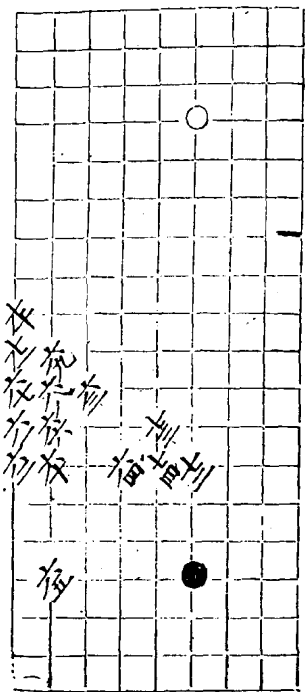
第三變 公七着

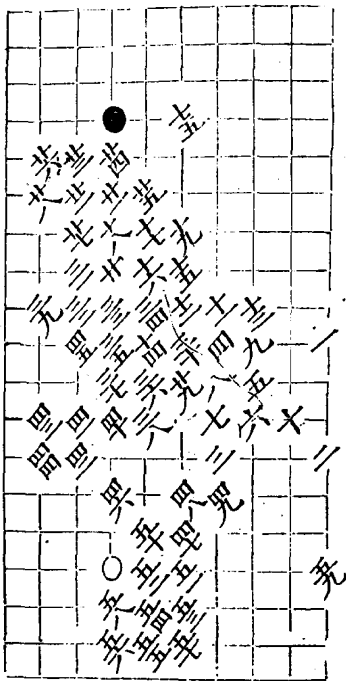




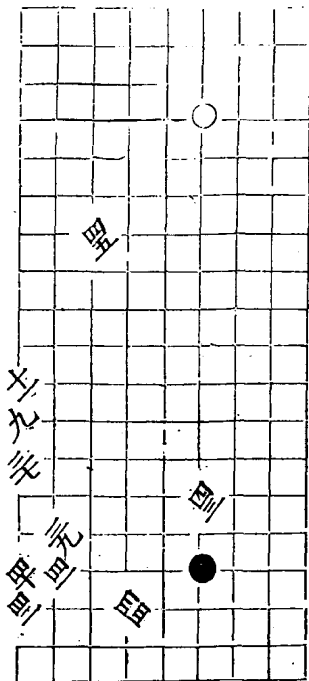
第三局

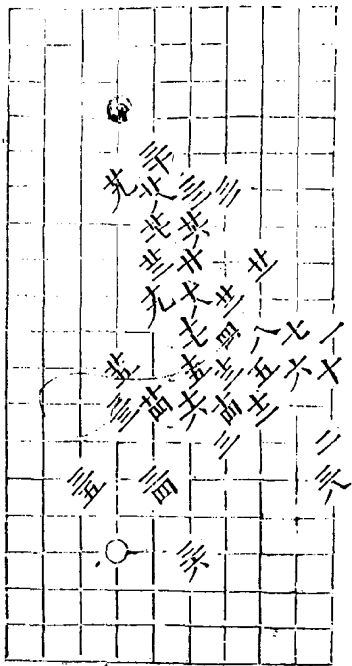
十五着



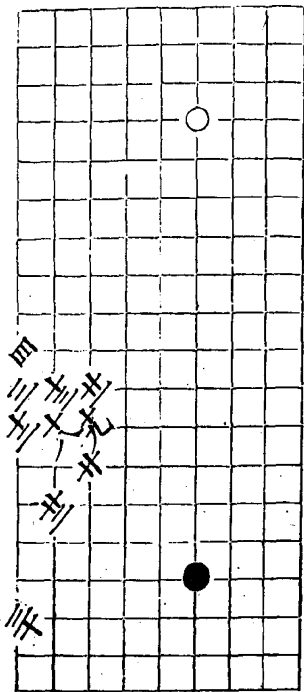


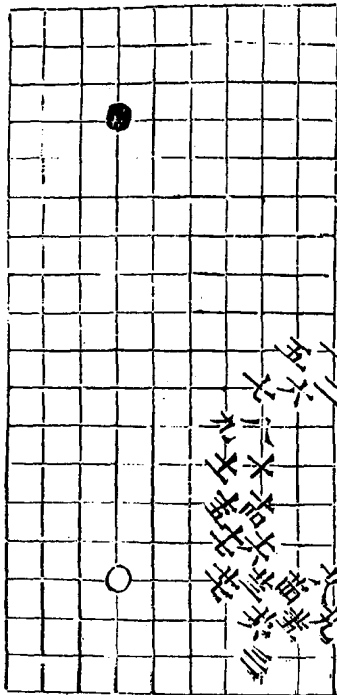
第四變 四五着



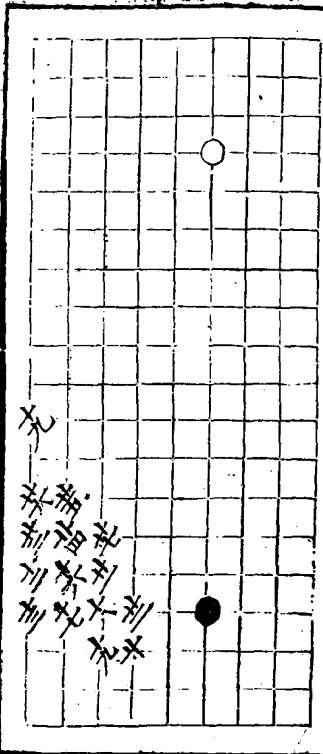


背擊二 共五局 第一局 三子着

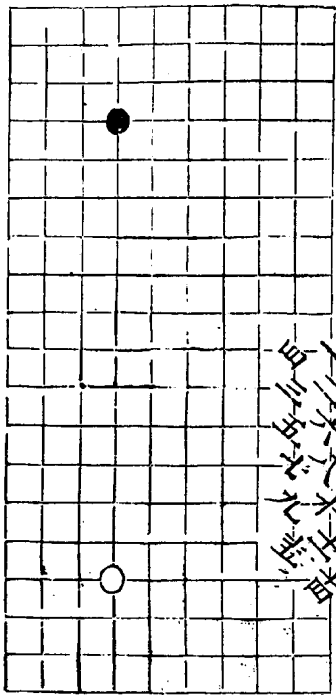




第二變 三五着

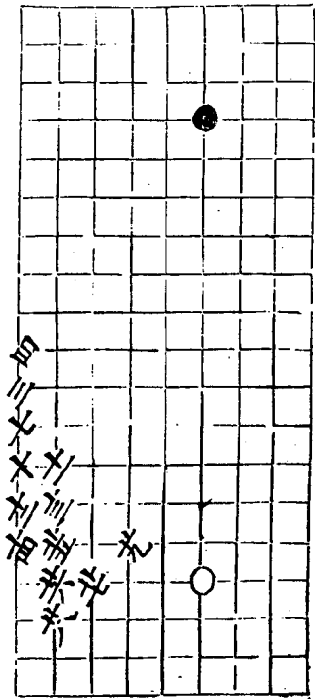


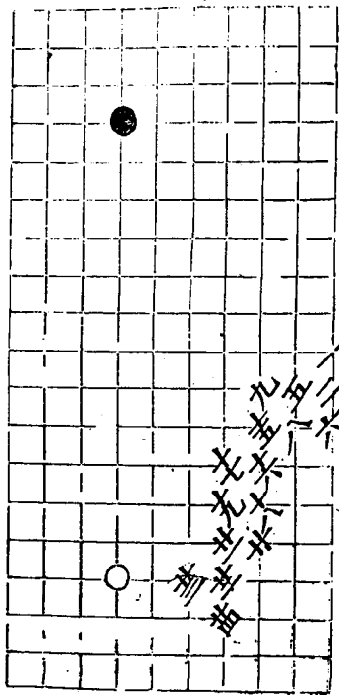
大同三



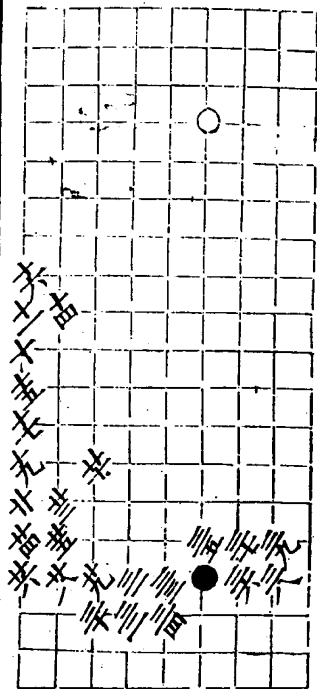
大同三年六月廿三日

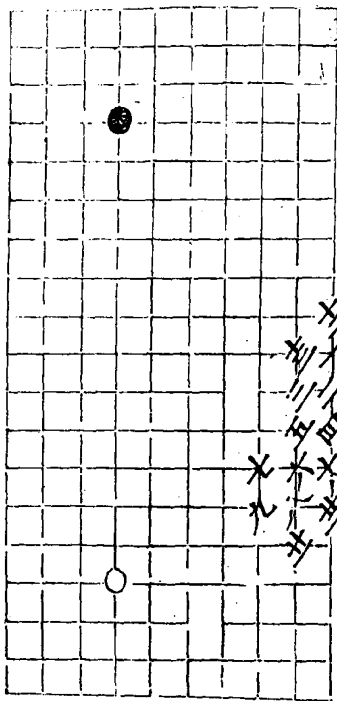
第三變 无着





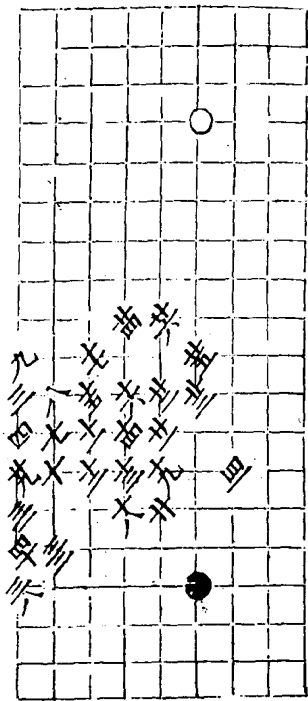
第四局 三九着





五
六
七
八
九
十
十一
十二
十三
十四
十五

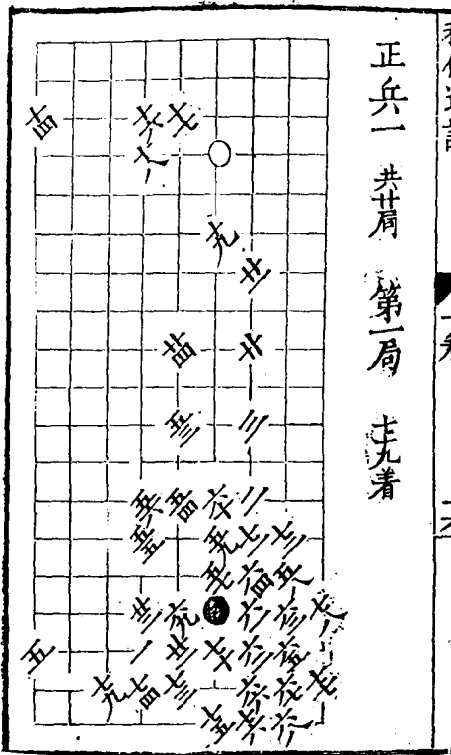
第五局 早七着



A 15x15 grid with a black dot at (2, 10) and a white dot at (13, 10). The grid is used for a mathematical problem involving the calculation of the area of a square with side length 15. The area is calculated as 15 x 15 = 225. The grid is divided into four quadrants by a vertical line at column 7.5 and a horizontal line at row 7.5. The area of each quadrant is 56.25. The area of the four quadrants is 225. The area of the square is 225. The area of the square is 225. The area of the square is 225.

一
二
三
四
五
六
七
八
九
十
十一
十二
十三
十四
十五

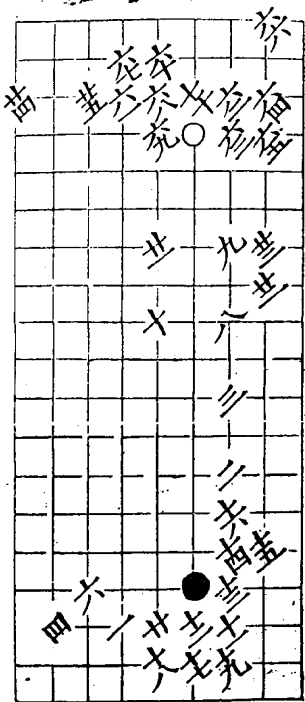
正兵一 共廿局 第一局 正九着

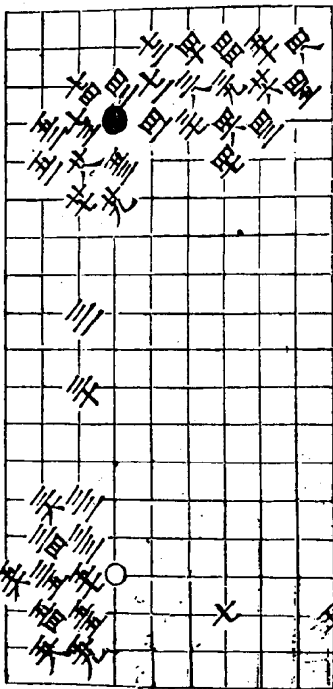


第二局

七十四着

四九同元

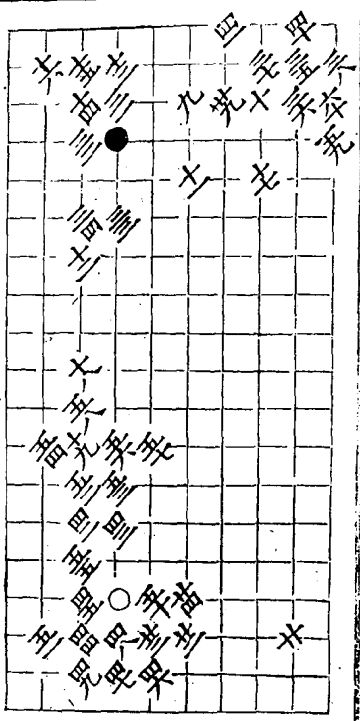




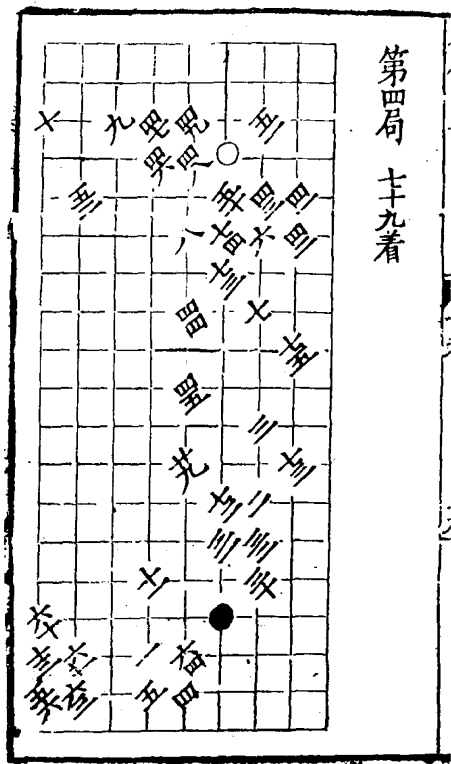
第三局

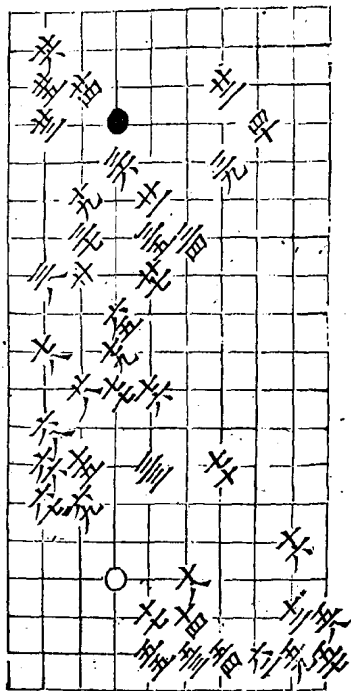
六十九着



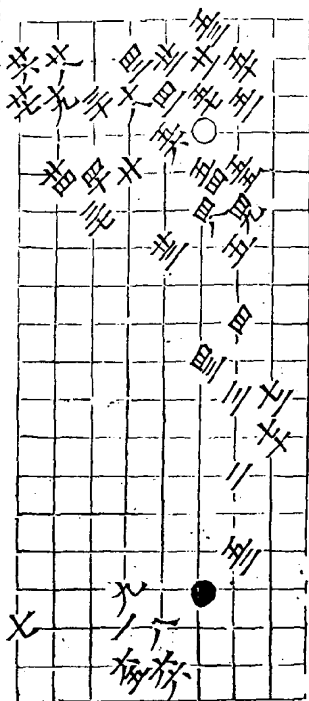


第四局 七九着





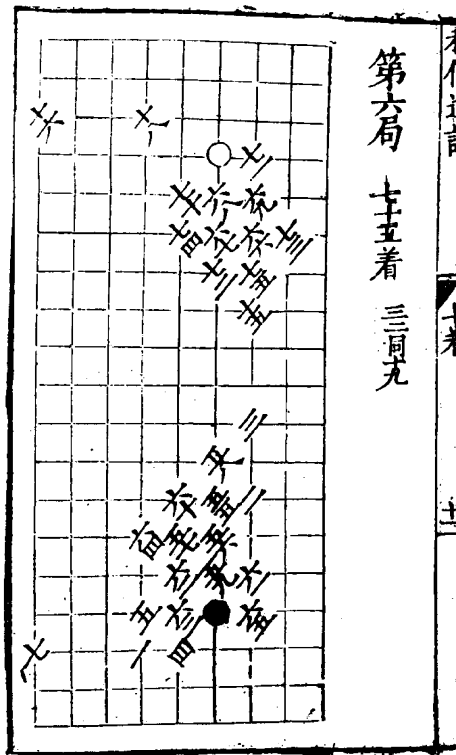
第五局 七十二着

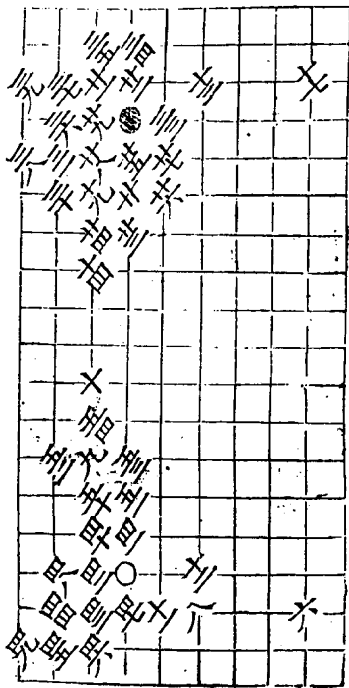


第六局

十五着

三回九



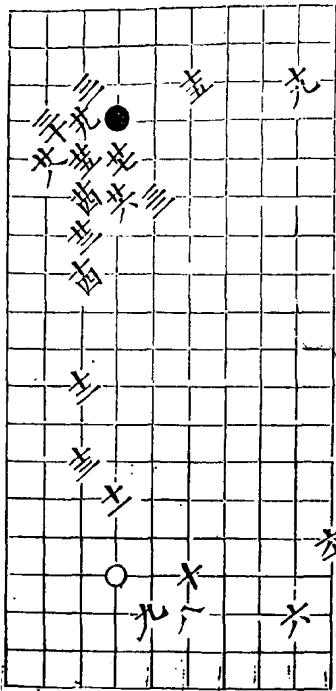


第七局

七七着

五九同五
七六同七

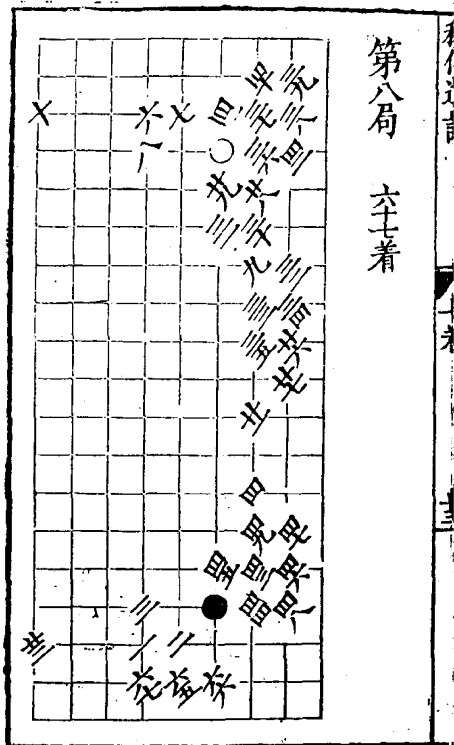


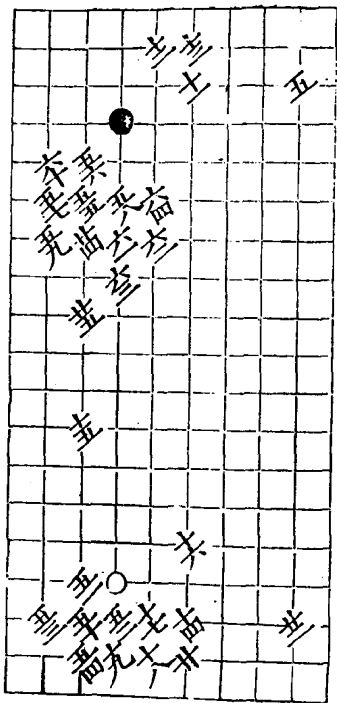


和合言
一
三

第八局

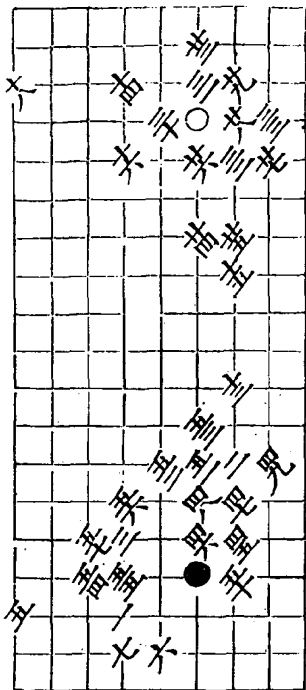
六七着



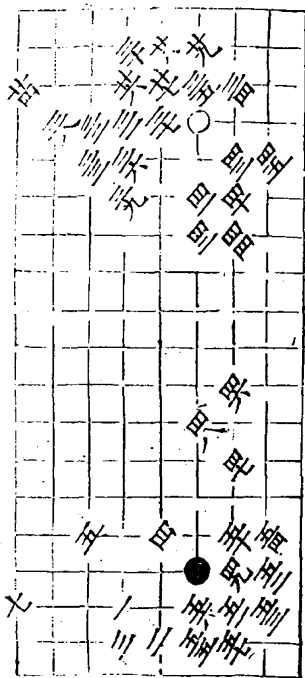


第九局

八十一着



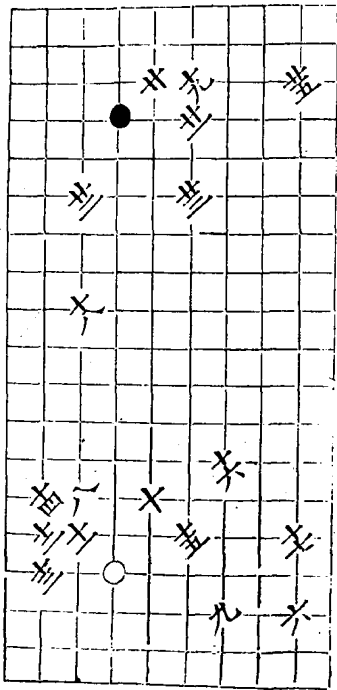
第十局 五七着

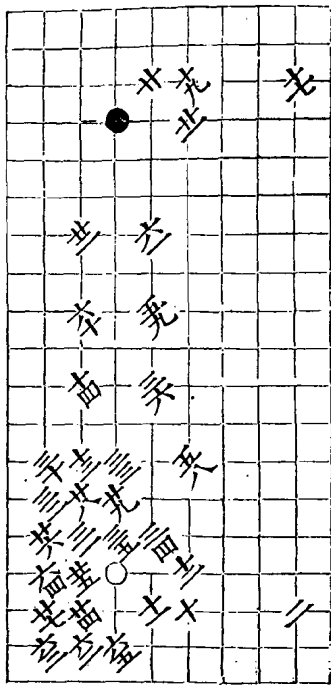


六

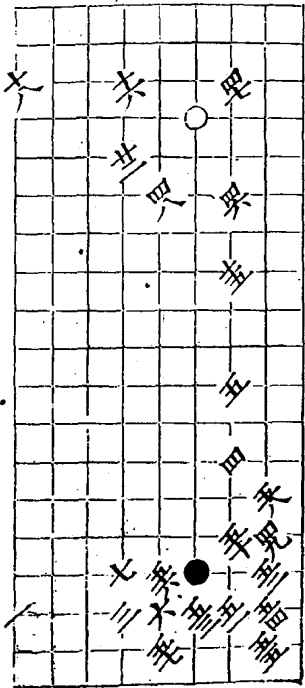
六

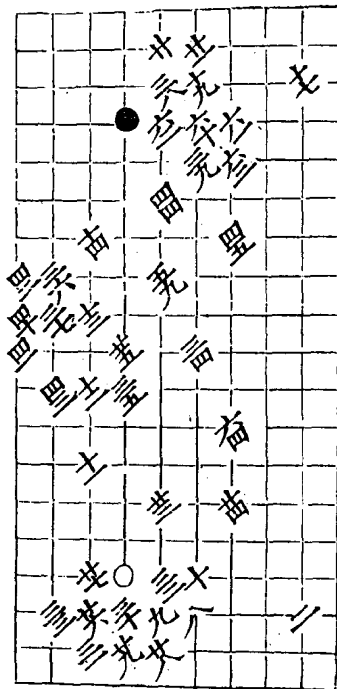
六



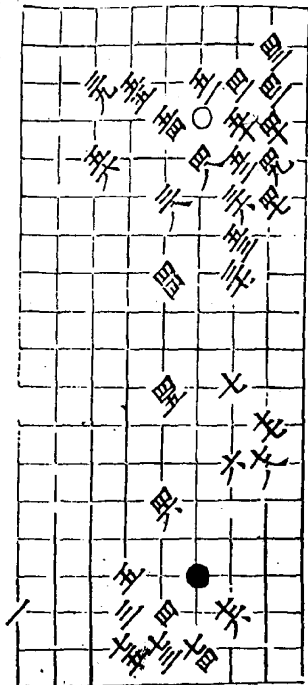


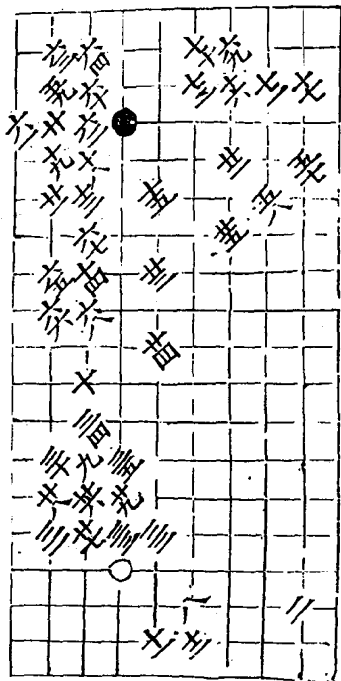
第十二局 六十四着





第四局 七十八着

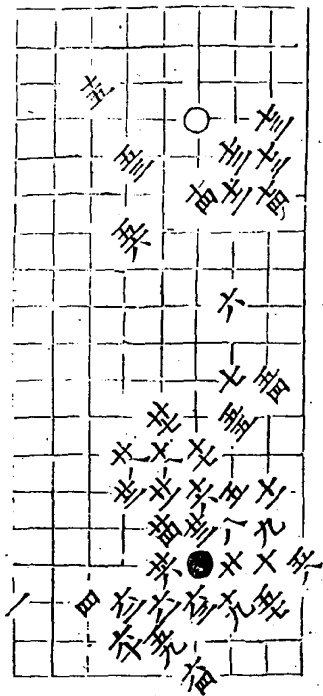




第五局

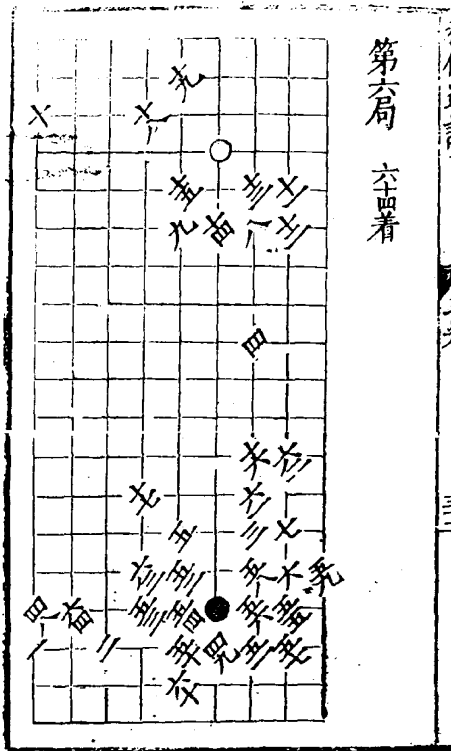
十四着

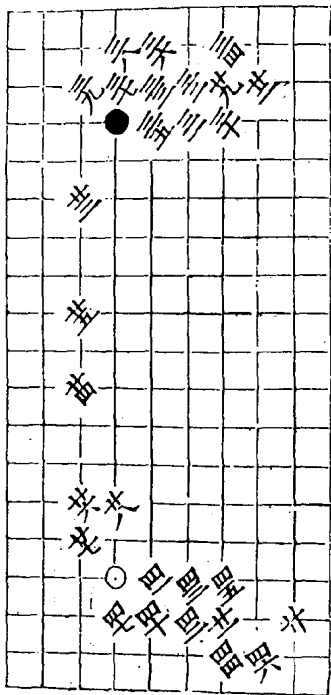
蓋洞六



第六局

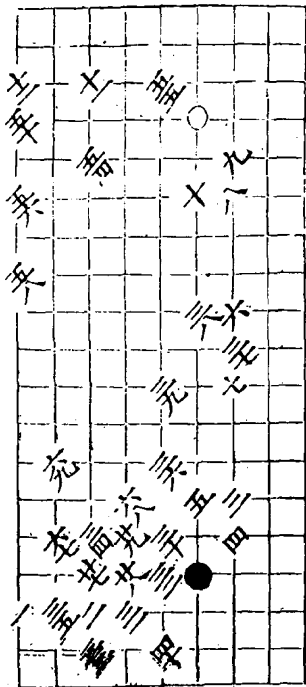
空四着

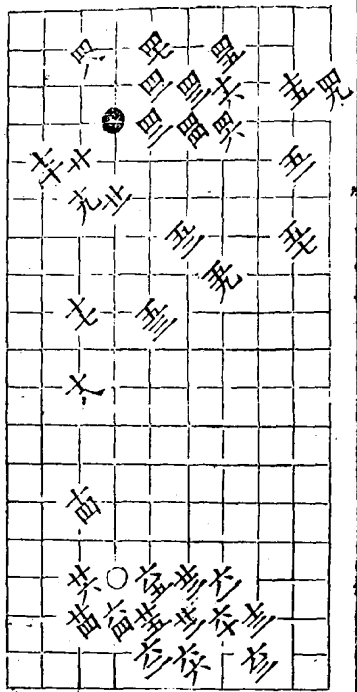




第七局

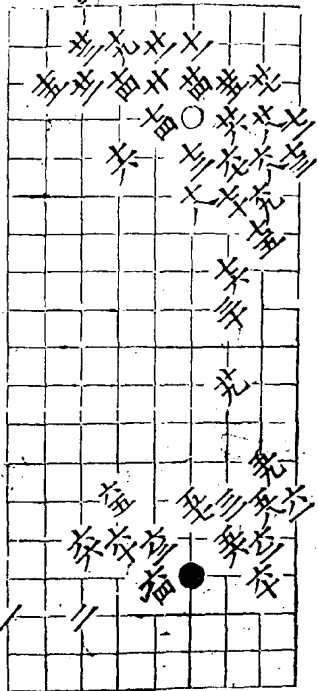
主着

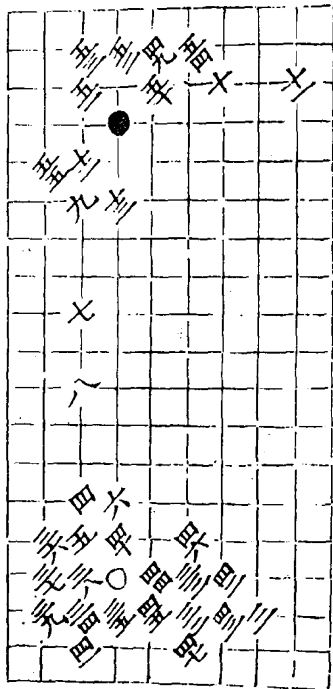




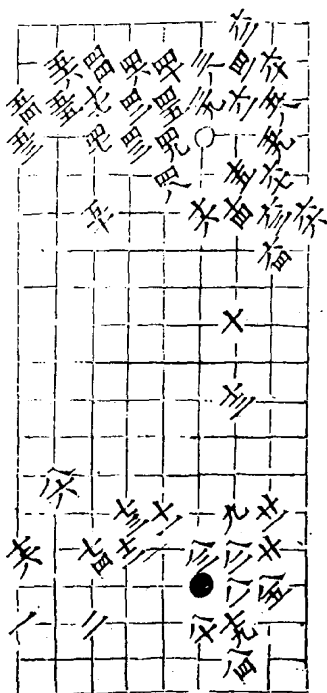
第八局 七五六着

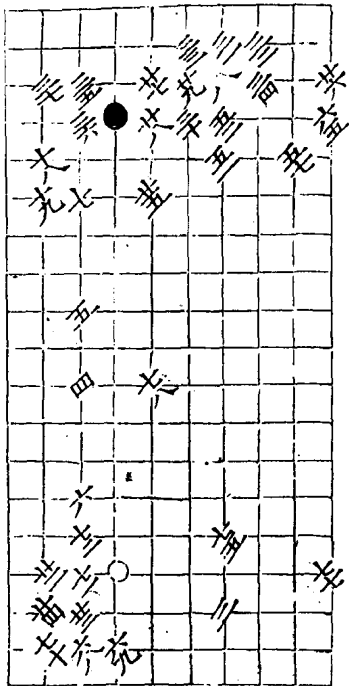
四八三





第九局 八六着



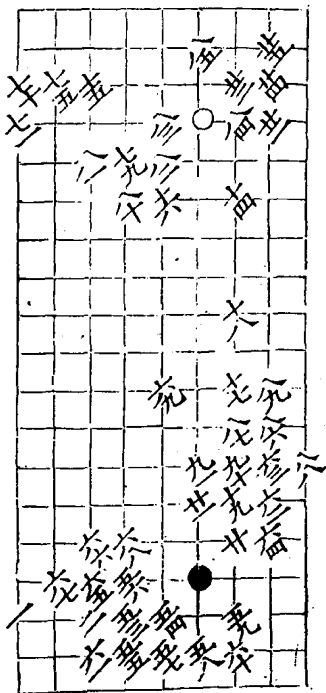


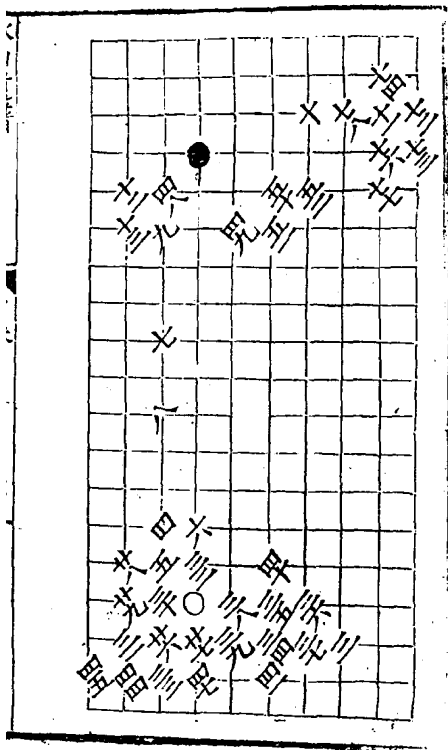
第十局

九十二着

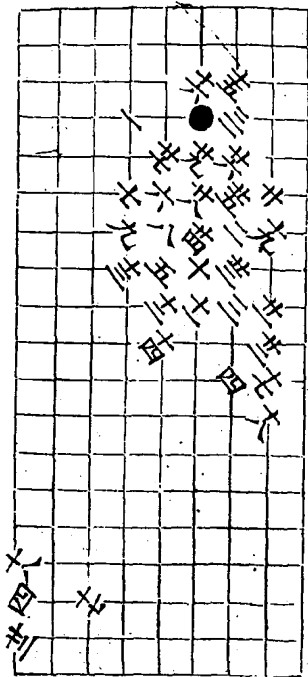
四同五
四同五

四同三五

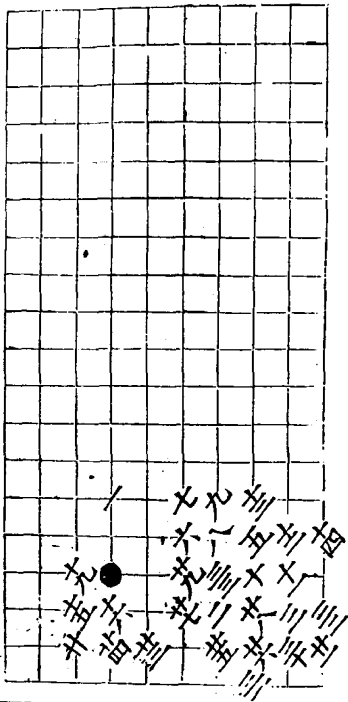




鐵重關 共四變 第一變 自勝三子著 三同廿五

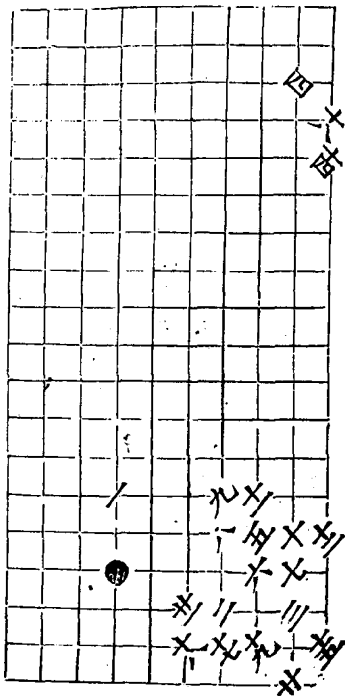


二變 白勝三十三着

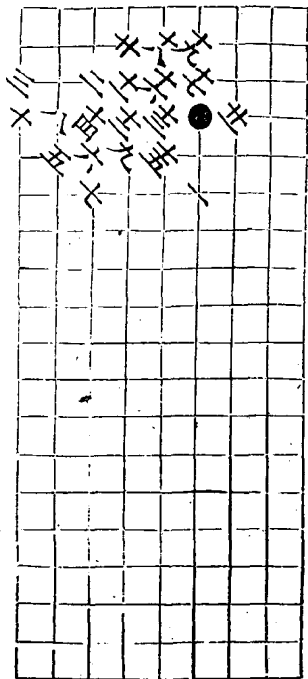


四變 白勝三子着

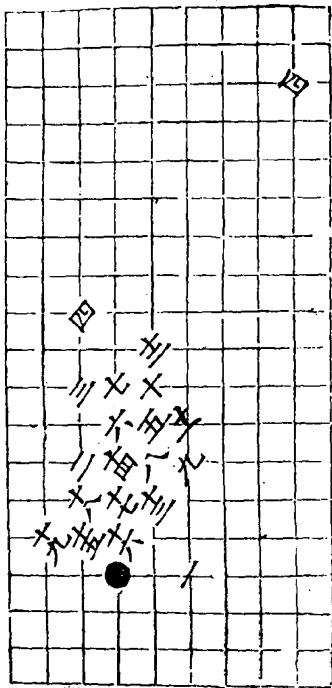
大山貴直目



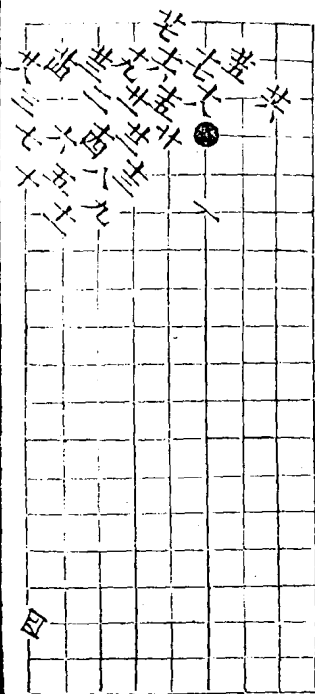
五變 白勝于着



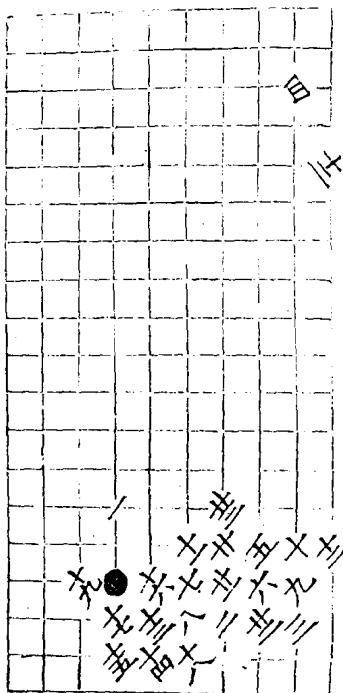
六變 白勝十九着



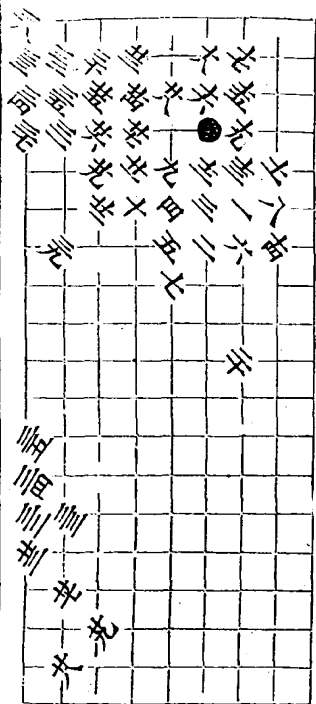
七變 黑勝三八着



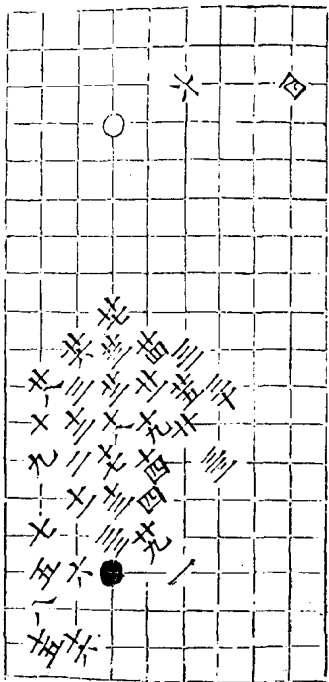
八變 白勝二十四着



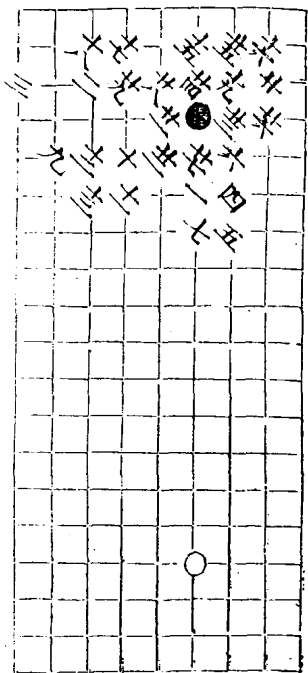
士變 自勝三九着



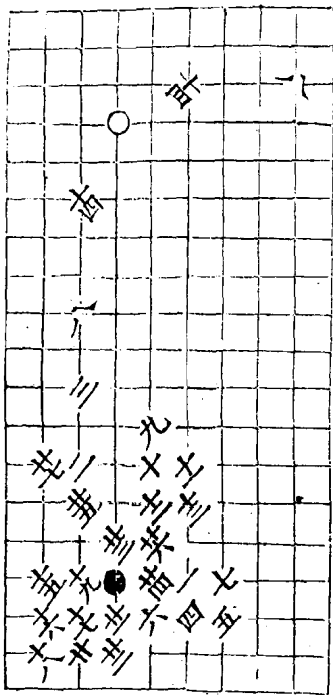
十變白勝三着



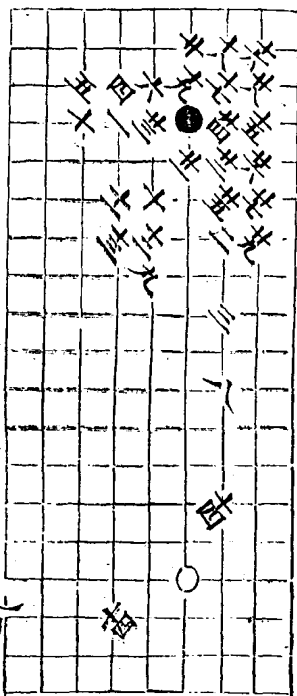
十一變 自勝二十九着



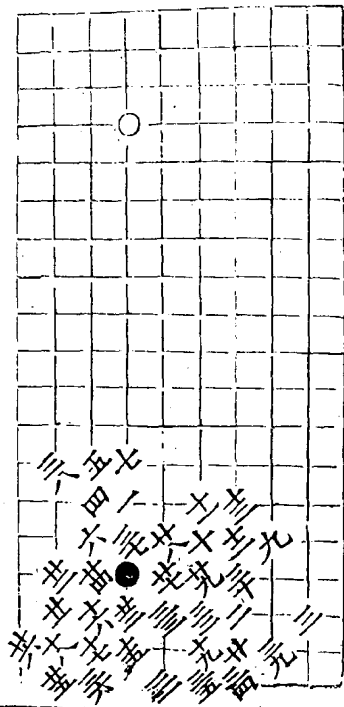
十三變 白勝三七着



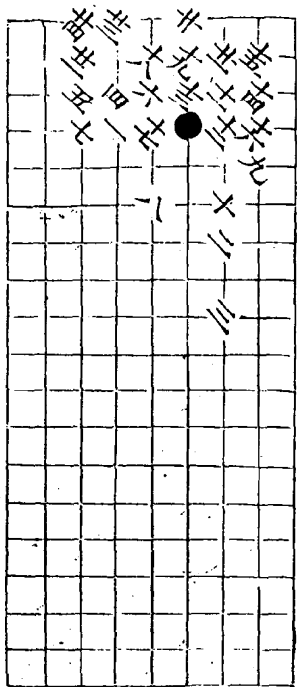
十三變 白勝二九着



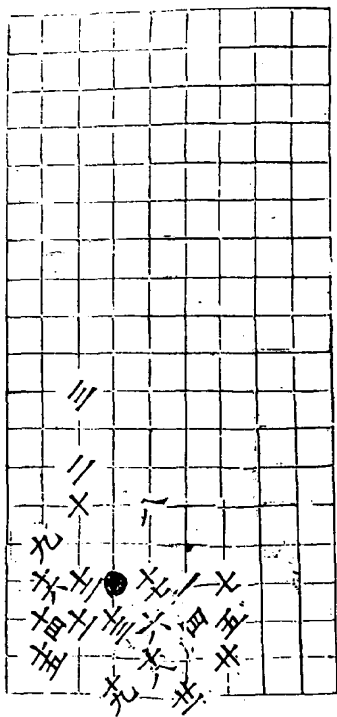
十四變 自得勢三九着



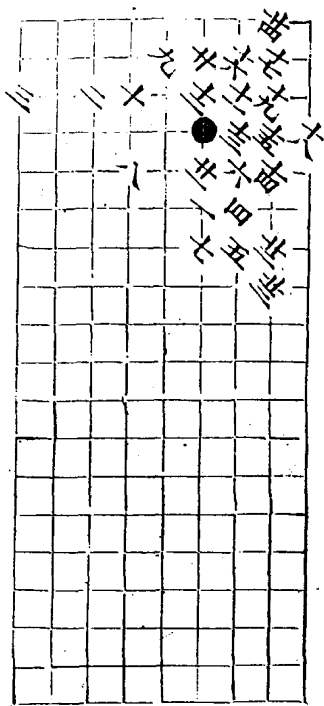
破鐵角 共六變 第一變 黑勝二十四着



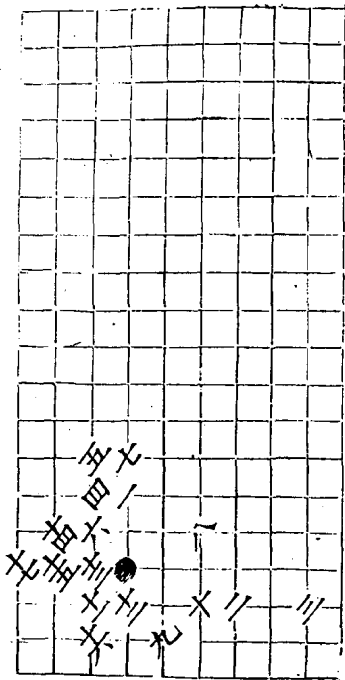
二變 白勝王着



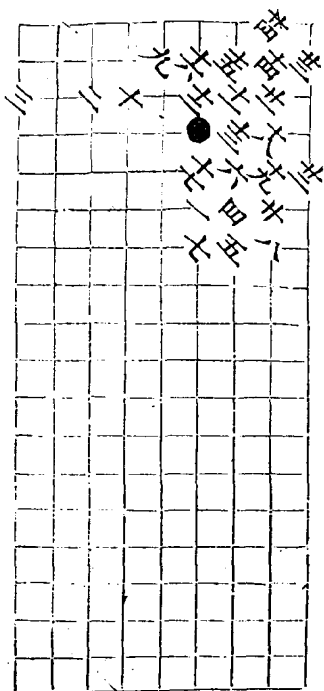
三變 黑勝于四着



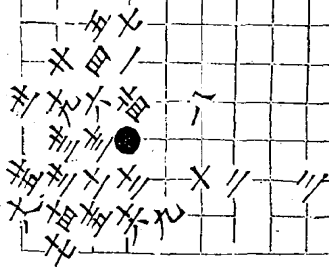
四變
白勝十七着



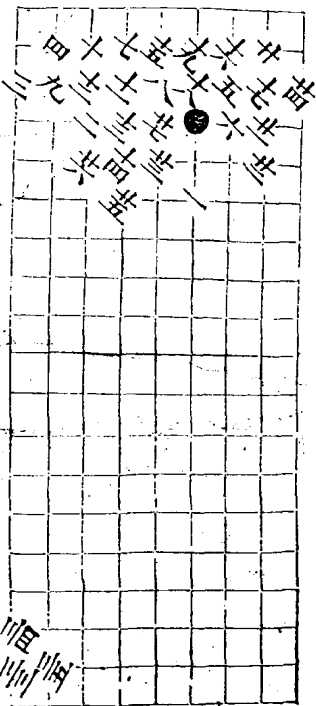
五變 黑勝二十四着



六變 劫勝三五着

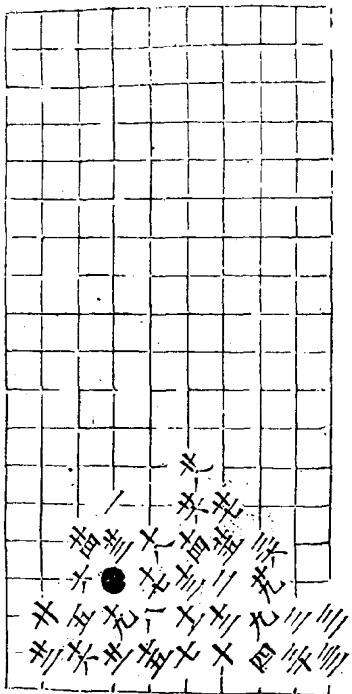


平角圖 共九變 第一變 兩令三七着

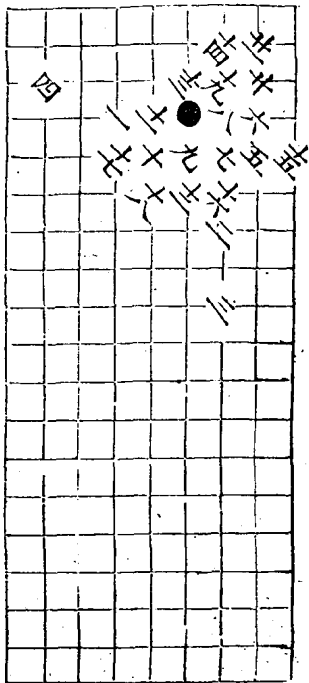


廿九
廿九
廿九

二變 黑勝三十六着

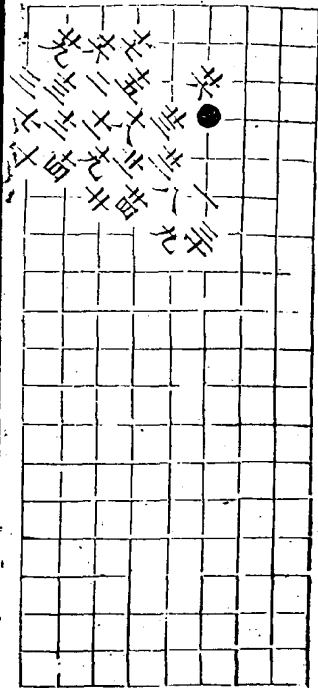


三變 自勝于着

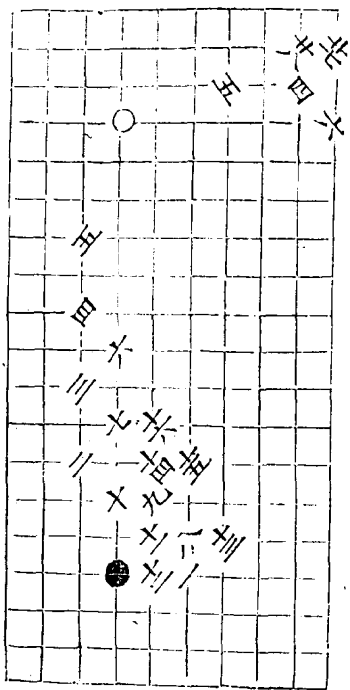


五變 黑勝三子着

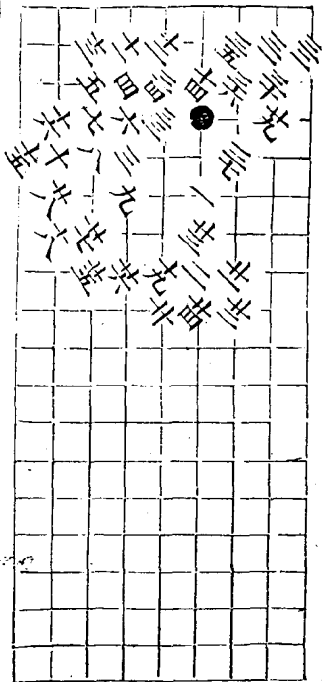
廿五同六



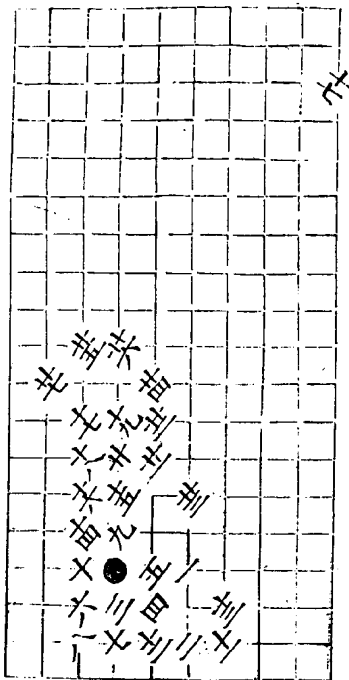
六變 黑勝上六着



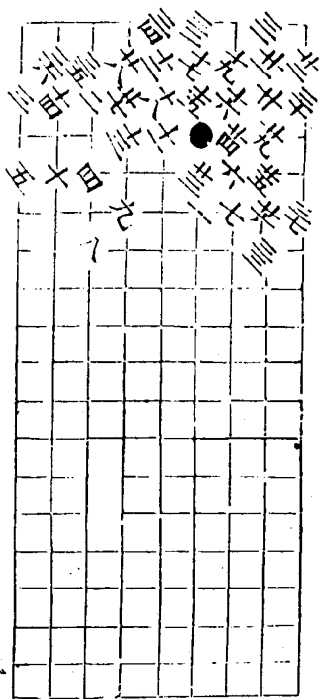
七變 自勝三七着



八變 白勝子七着

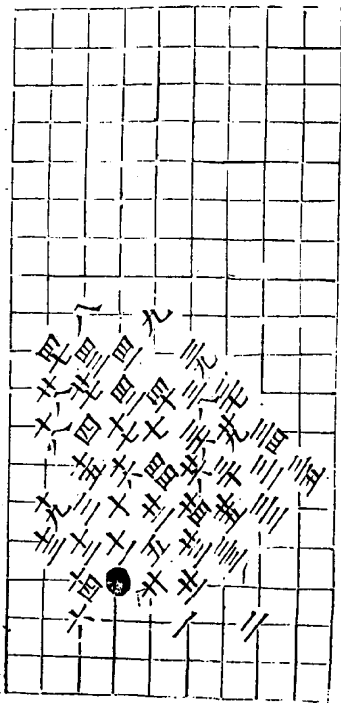


九變 白勝三七着



短弩箭圖 白勝四十七著

四五同七 四六同七



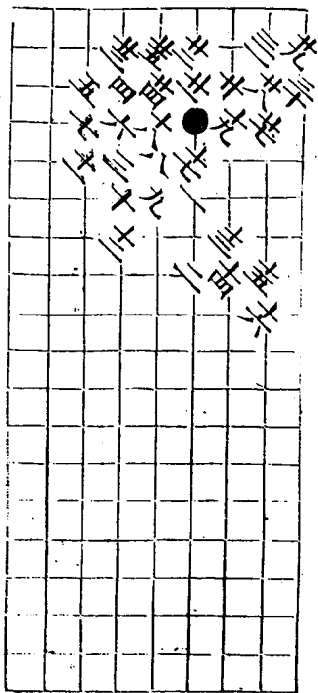
飄雪前
重出

和道譜

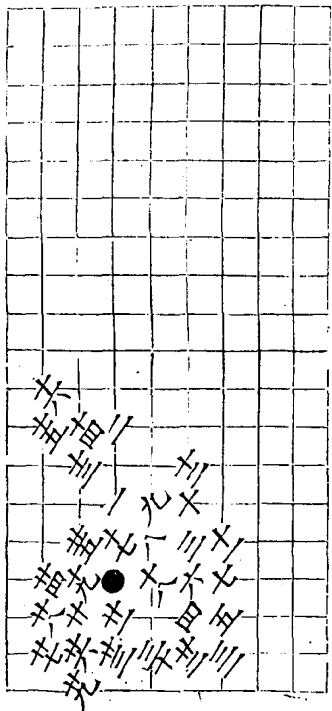
七卷

五

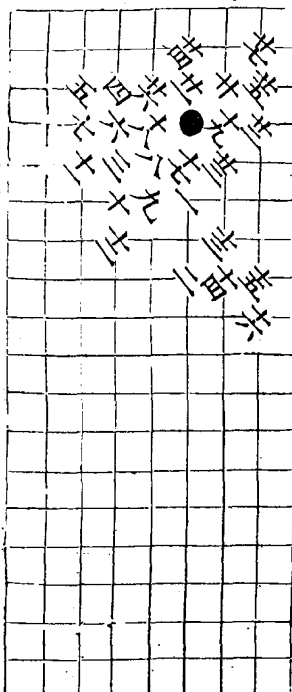
平關斜飛角 共土變 第一變 白勝于着 共回



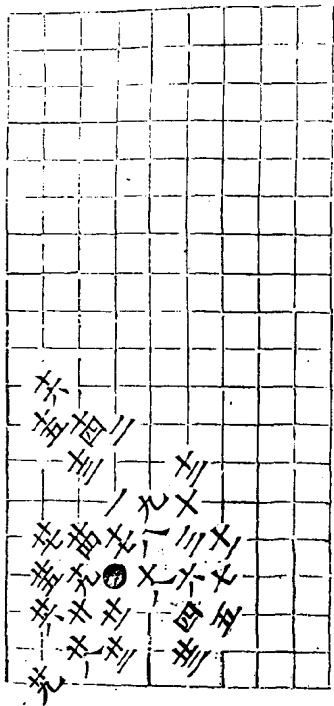
二變 白勝三子着



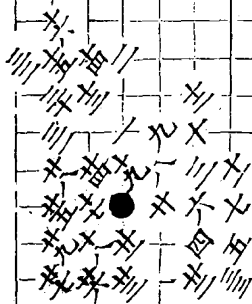
三變 白勝二十七着



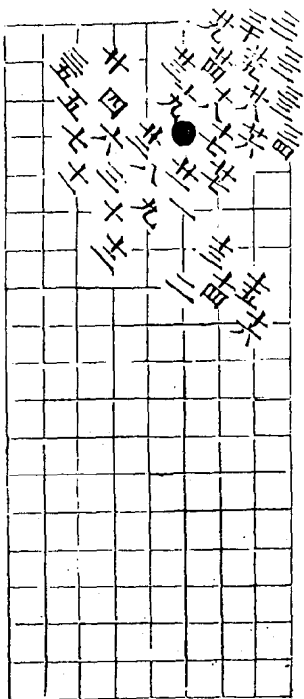
四變 白勝二十九着



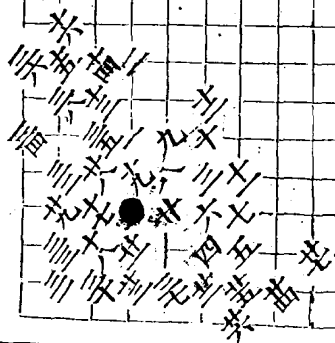
六變白勝三三着



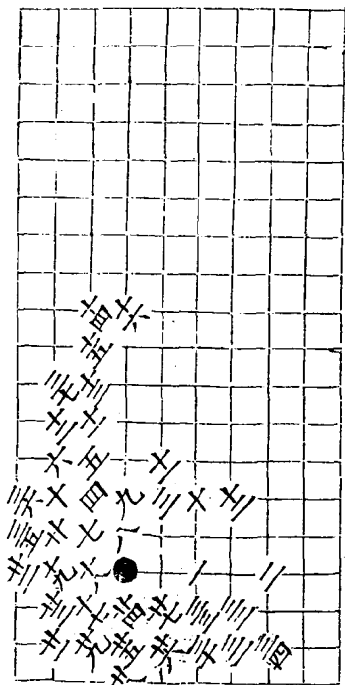
七變 白勝三五着 黑着亦妙



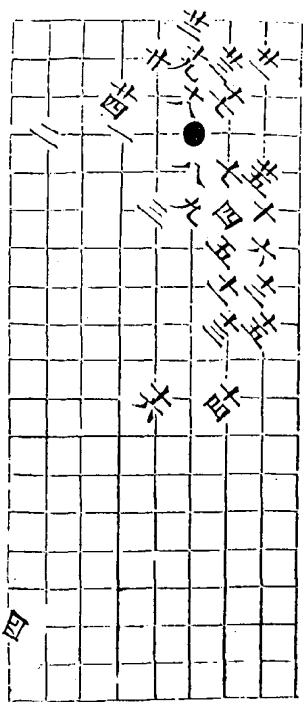
八變 黑勝三十八着



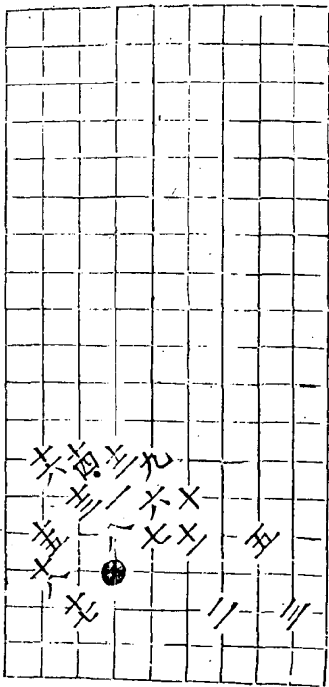
十變 白勝三十七着



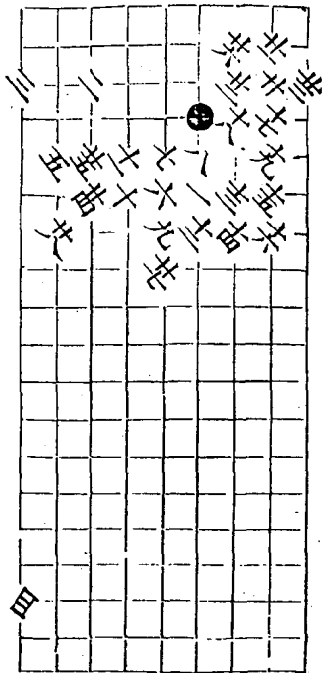
十二變 白勝三五着



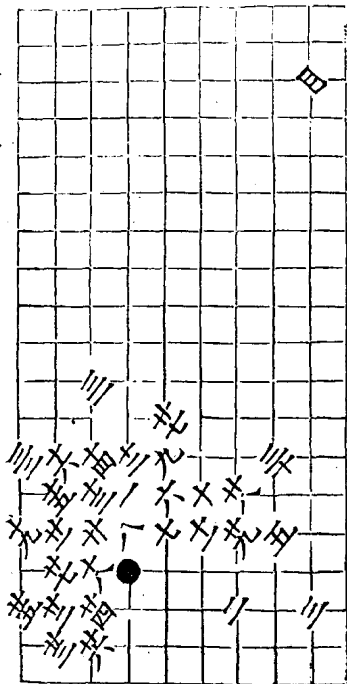
飛關角 四變 第一變 白勝十八着



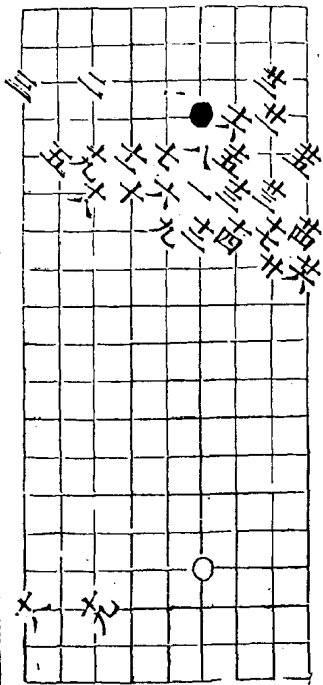
二變 黑勝千八着



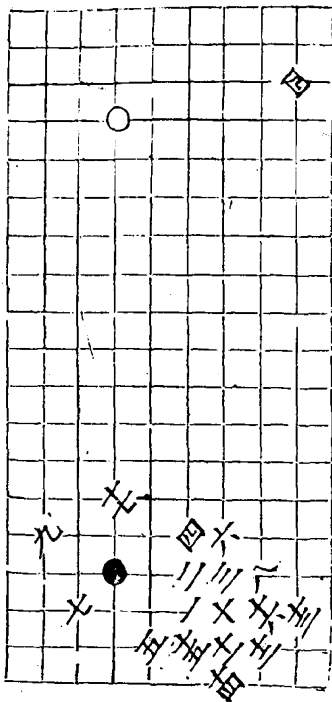
三變 黑勝三三著



四變 黑勝于六着

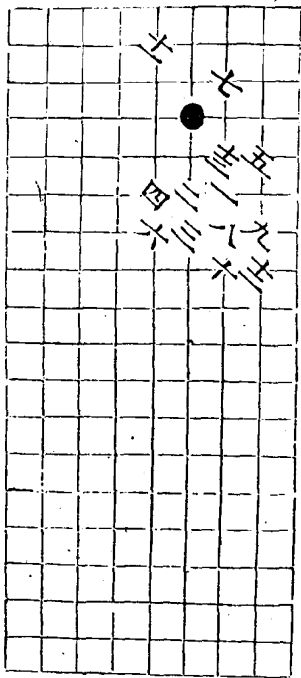


定光圖 共五變 第一變 白取勢十九着

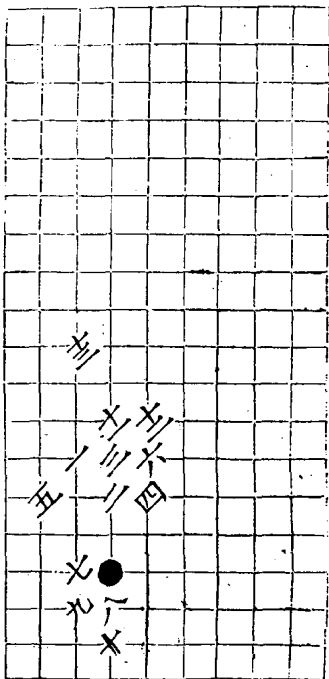


第二變

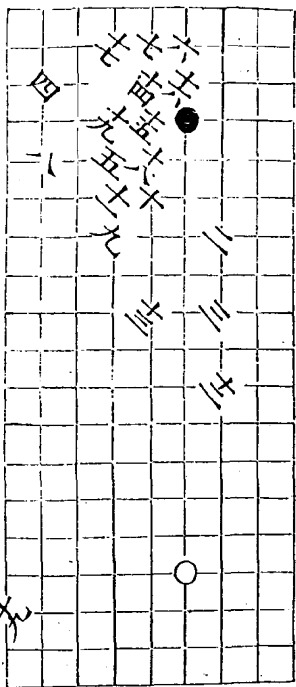
兩分十三着



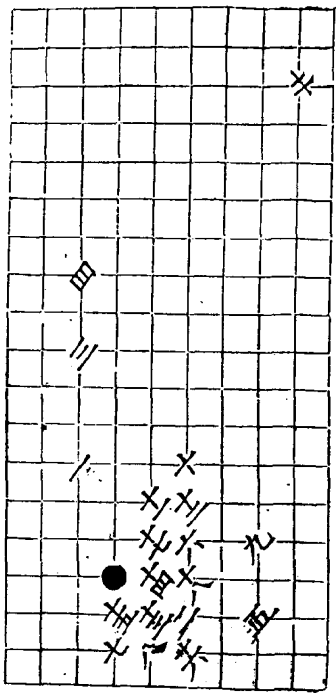
三變 白勝十三着



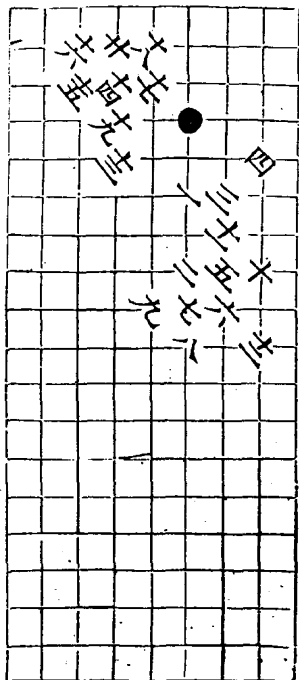
四變 黑取勢于着



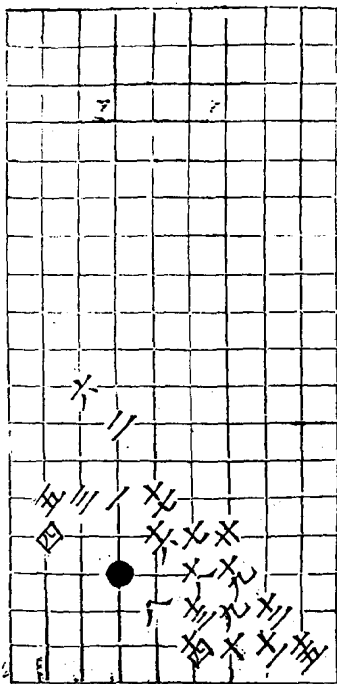
五變 白取勢十九着



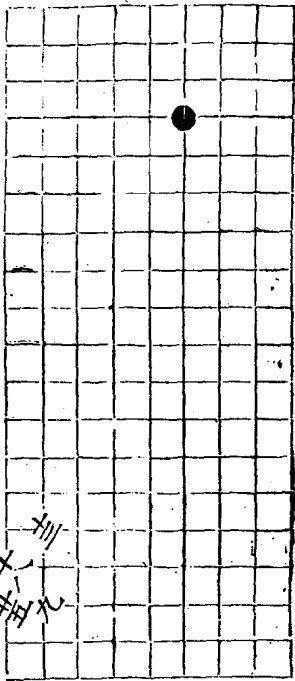
垂鈎角 二變 第一變 黑取勢二十三着



第二變 黑勝二十着

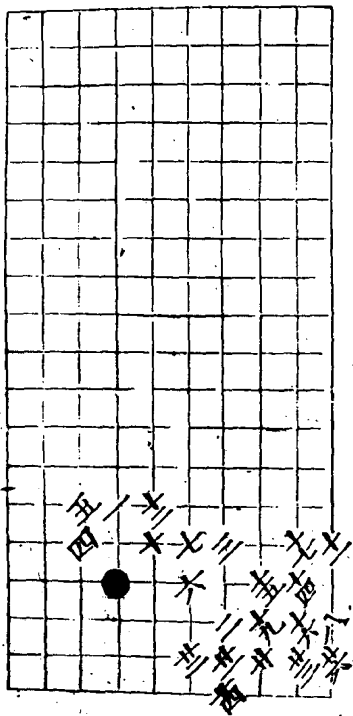


葫蘆套二變 第一變 黑取先立着



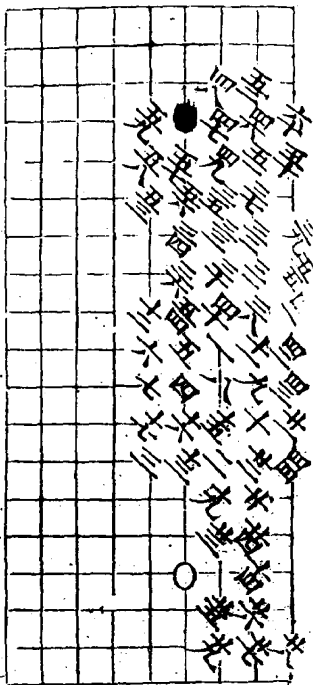
十一
十一
九

二變 自取勢于六着



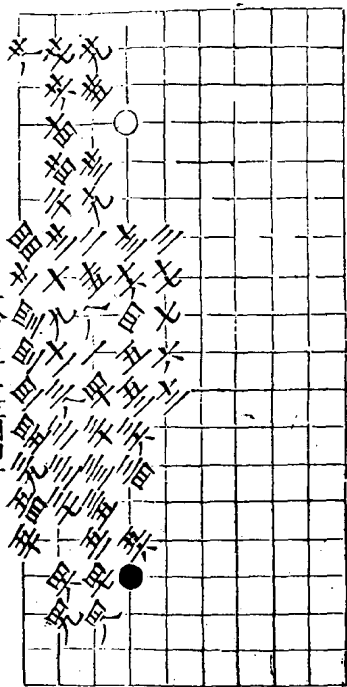
玉屏風二變

第一變 黑勝卒着



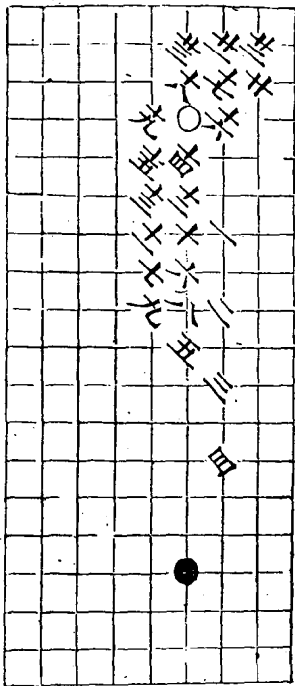
第二變 黑勝五六着

大同五 五三同四二
五三同三下

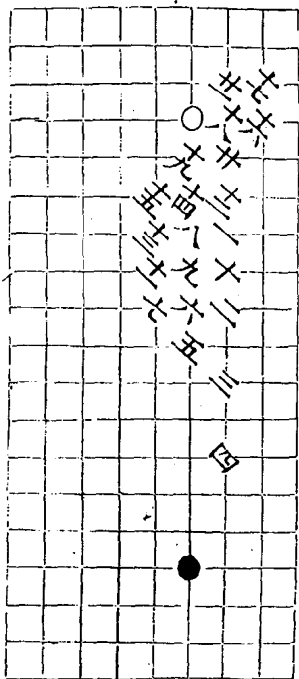


飛捺角六變

一變 自勝二十三着



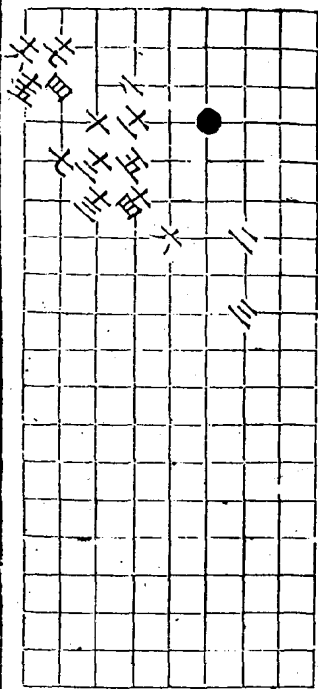
三變自得勢三着



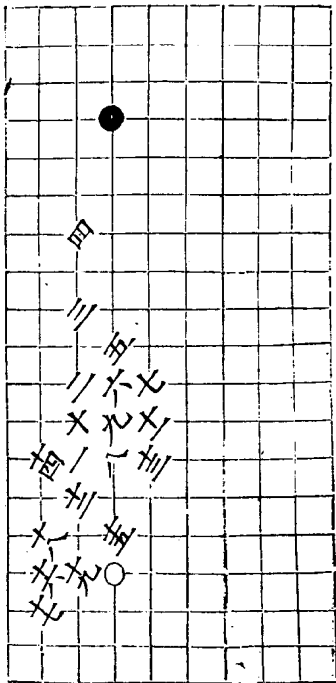
原缺

玲瓏布置 二變

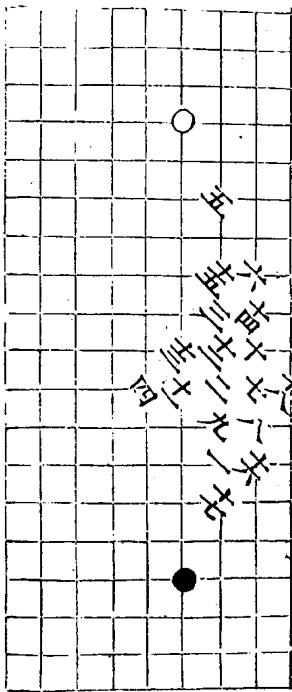
第一變 白勝七着



四變 白取勢十九着

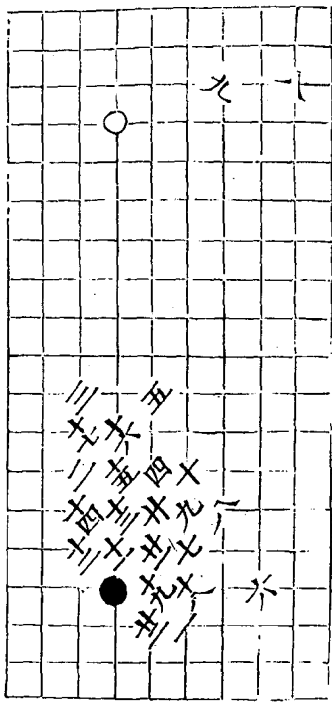


五變 白勝六着

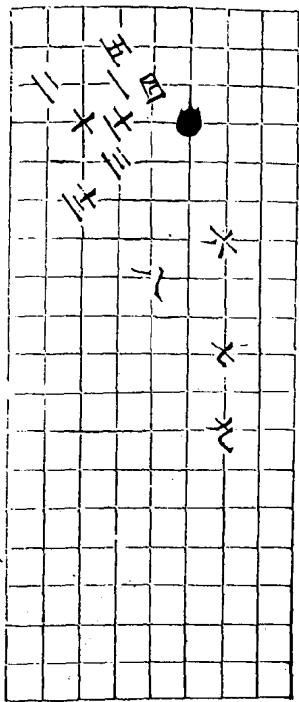


原缺

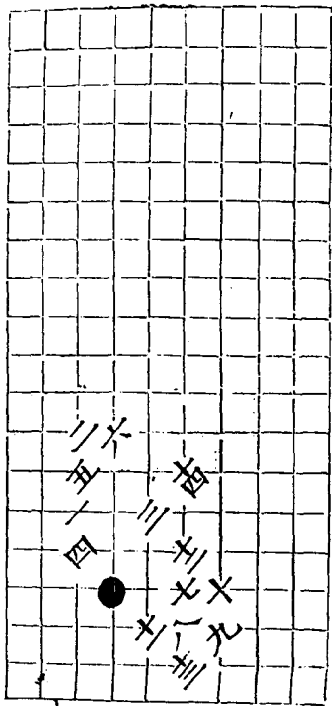
二變 黑勝二十三着



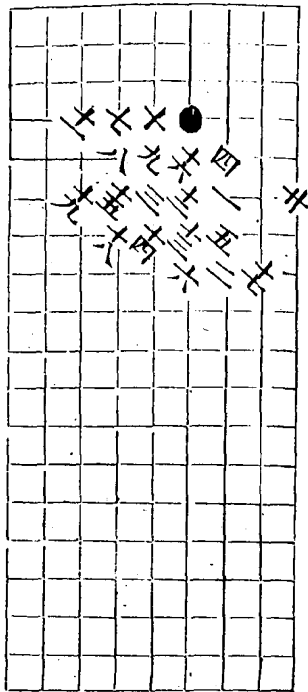
解連環 三變 第一變 黑勝士着



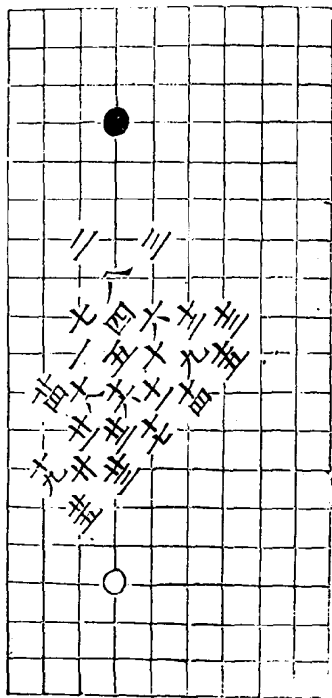
二變 黒勝十四着



三變 黑勝于着

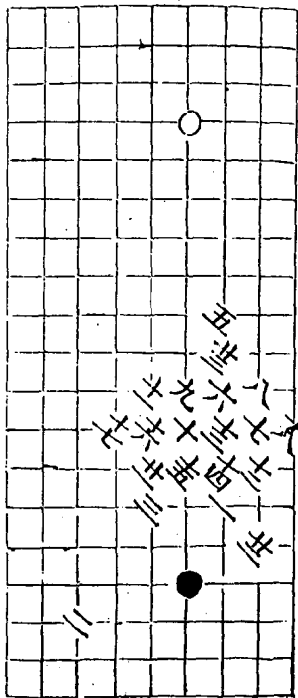


劉得顯局面
白取勢三五着

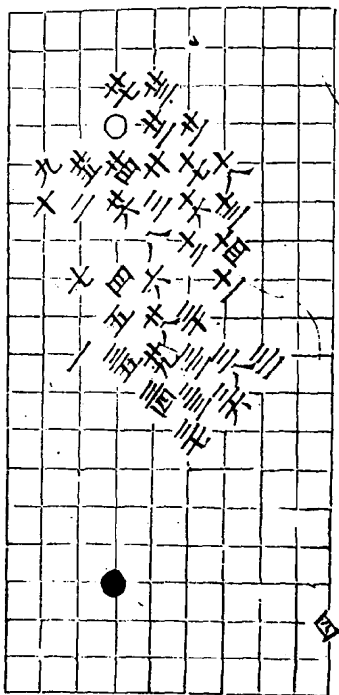


王友諒李碁童對局圖三變第一變

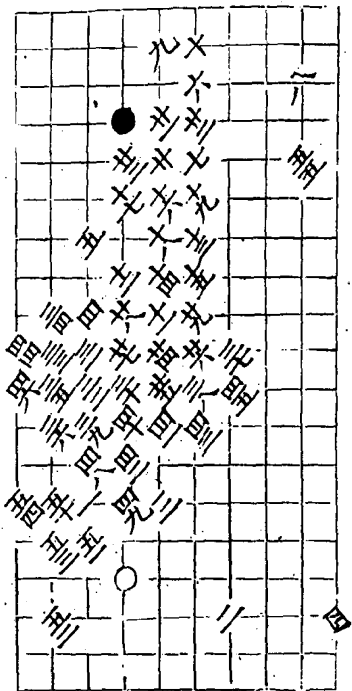
白取勢二千三着
九同二千同七



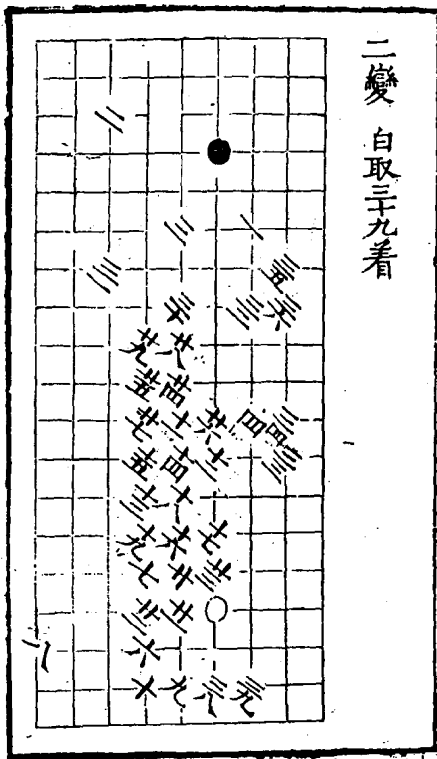
二變



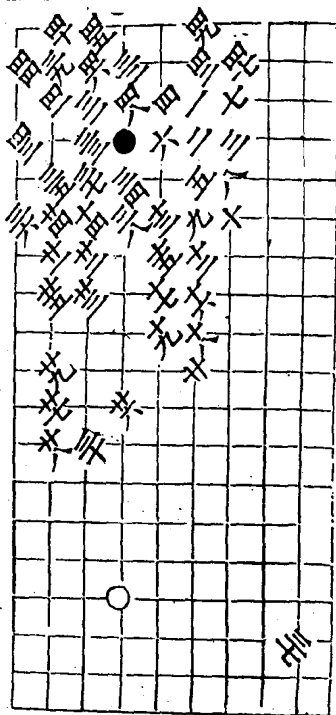
晉士明局圖二變 第一變 自取勢至五着 四七同苗



二變 白取三九着



黃保破角圖 白勝四九着



秋仙遺譜前集七卷

終