

奕

藪

奕藪亨集

海陽

具瞻蘇之軾編



亦可程明宗校評

起手說

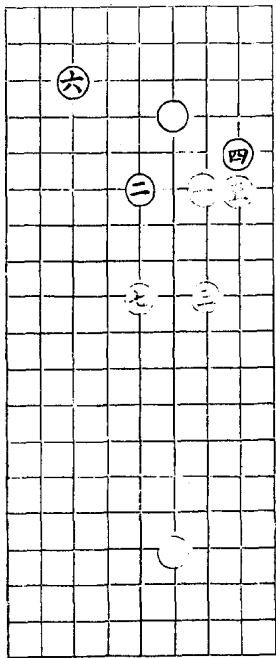
奕之起手猶兵之佈陣也中央四隅聽人下手但一不合拍卽無以啟變化之門須分佈得勢然後竒正縱橫一任後來變幻茲特取七類共一百三十二變固初學入門之第一義也

# 六三類

## 鎮神頭

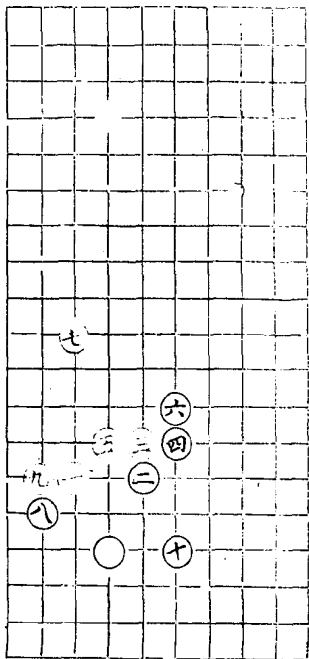
七妙

此略最難非如此善者日積月累不虛言

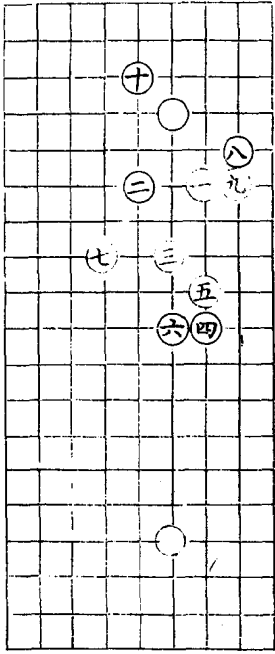


# 一二變

三妙五妙六妙



# 三變

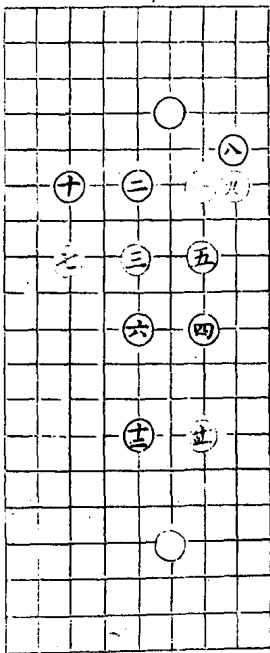


三變之圖



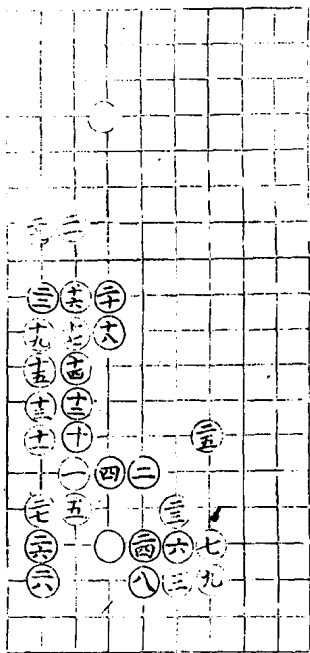
# 五變

六十四卦之變



# 六變

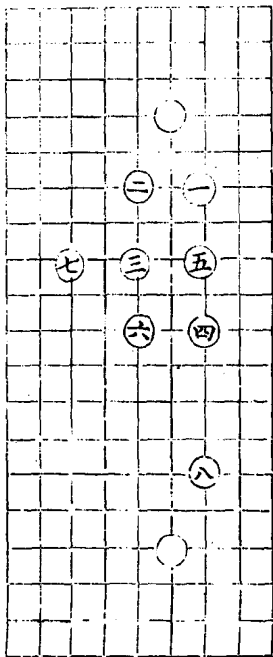
二十九在相顧守





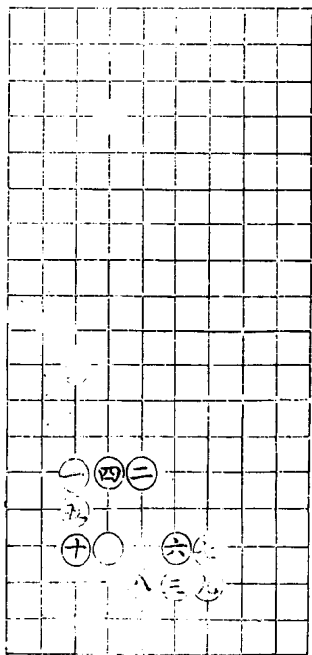
七變

八妙



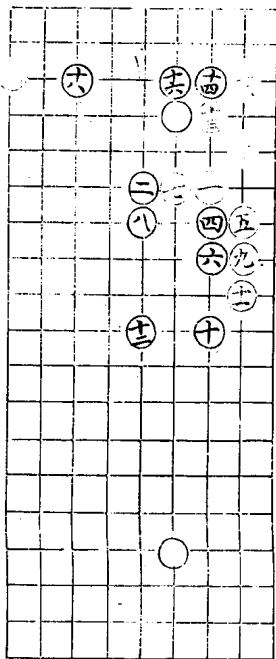
# 八變

十著先自保守以行敵得以堅攻理之法



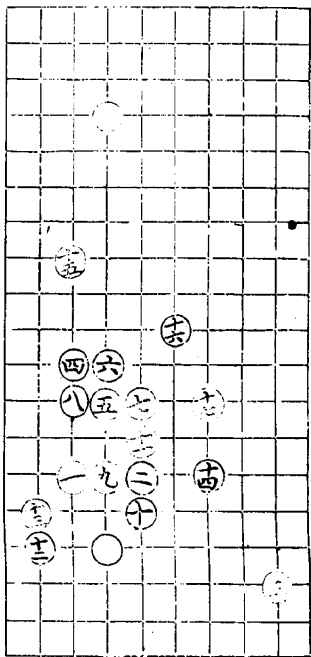
# 九變

以不詳



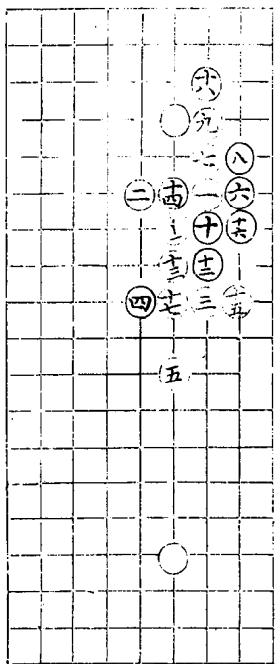
# 十變

三劫四着應單妙



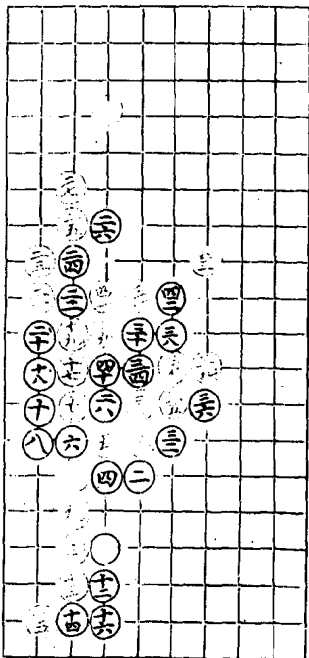
# 十一變

定於此六步



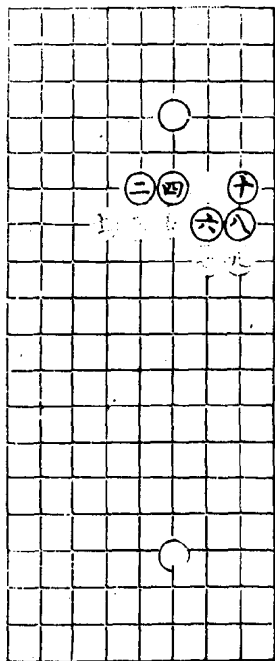
# 十二變

三十妙其局三一子解變注



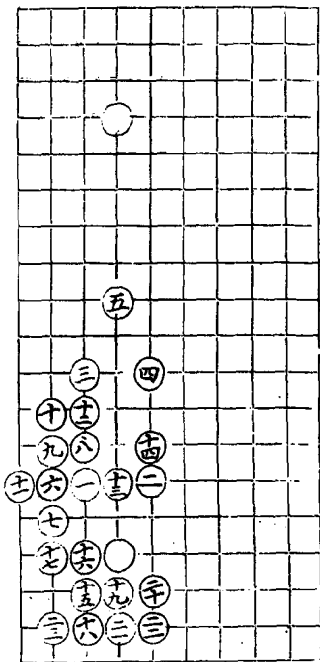
# 十三變

三子之妙法



# 十四變

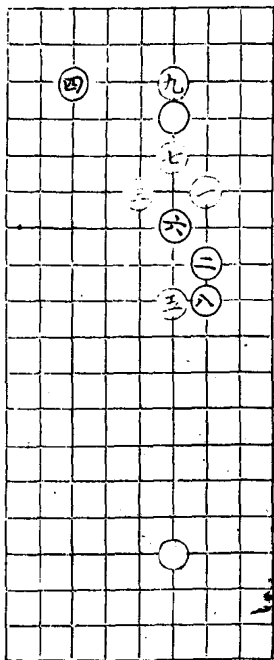
出秋仙十八妙在先收可法





# 捲簾邊

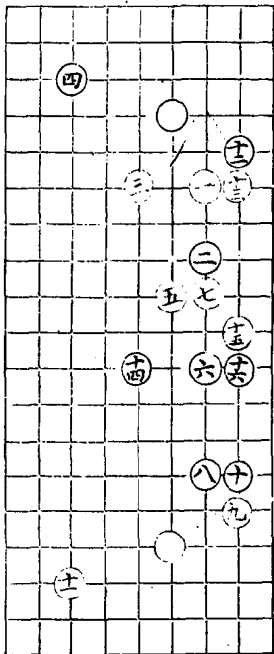
七妙九妙  
捲簾設套之巧不可不知





# 三變

恣無數變年收封勢失皆司二着以落套  
 之故耳凡變無子則勢不失而勝負未分  
 宜詳





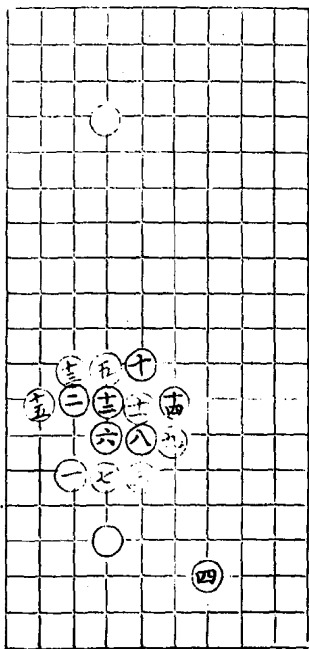
# 五變

一六同二十一  
三十一棄子爭先妙  
三十二同八



# 六變

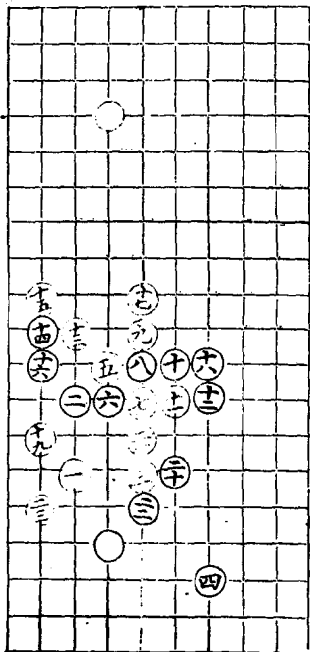
此局最忌





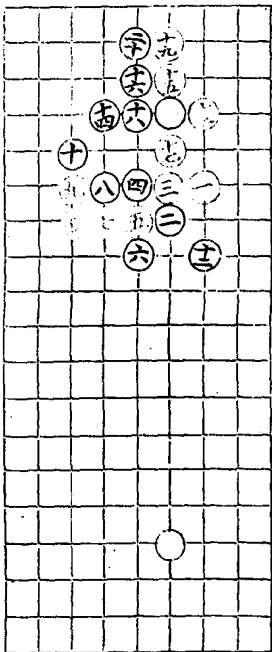
# 八變

一七步二十三步



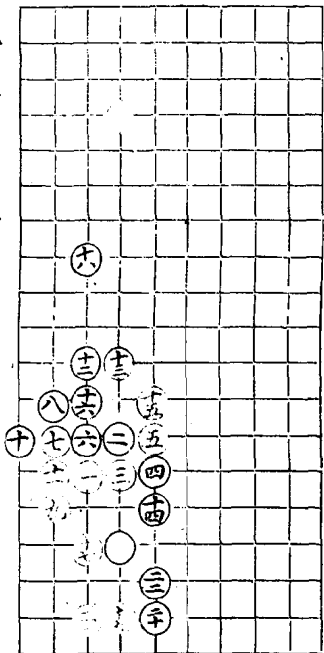


# 倒垂蓮



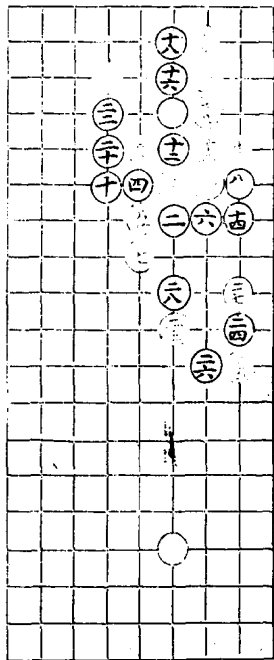
# 二變

十七十九步

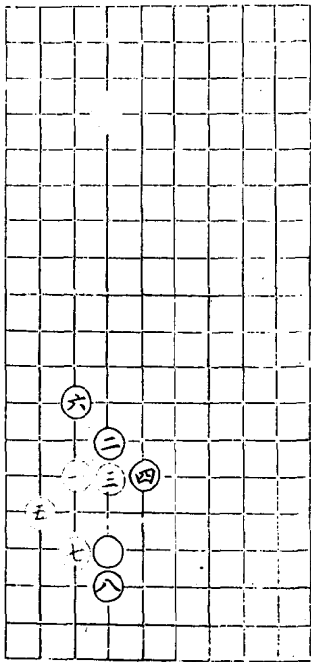


奕  
疾  
起  
手

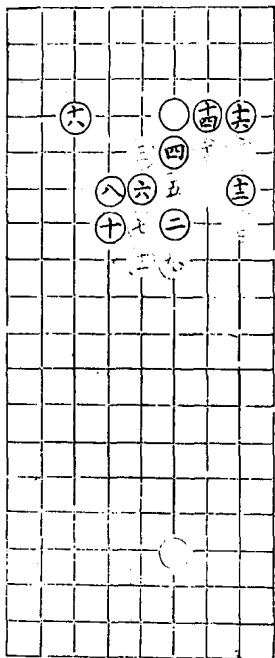
三變



# 四變

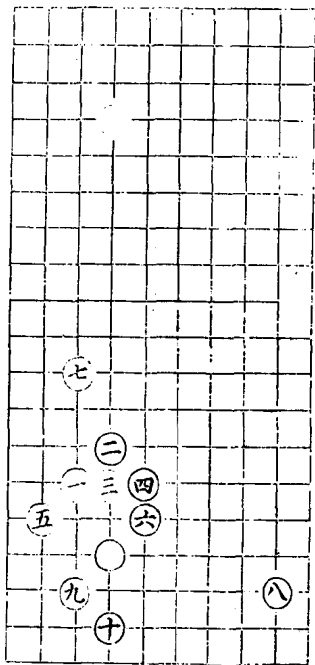


# 五變



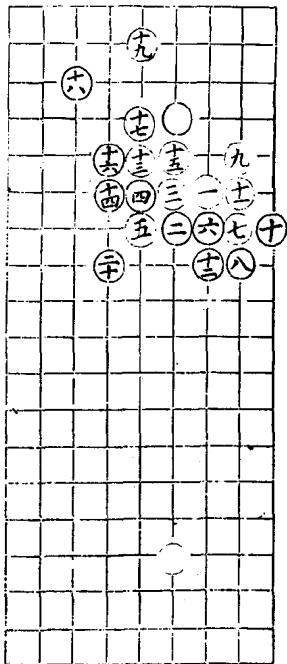
# 六變

五



# 七變

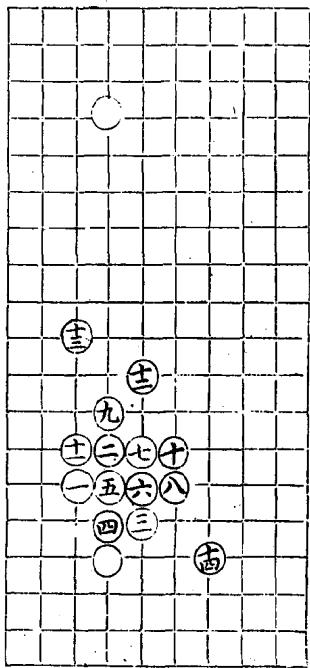
十二實粘得外勢



奕藝 起手

# 八變

兩分

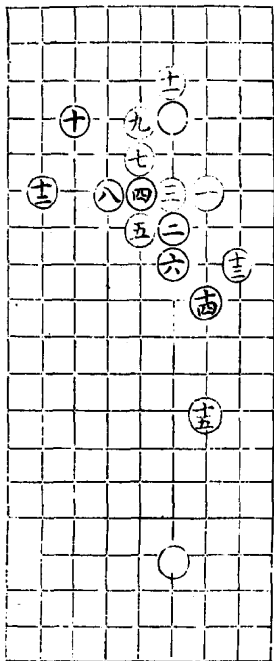


十六



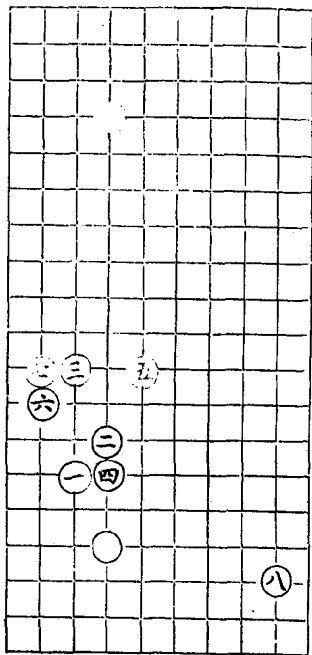
# 九變

六書集解九美巨匠院力



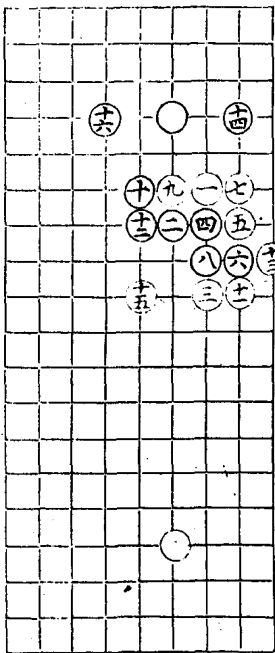
# 十變

三五妙



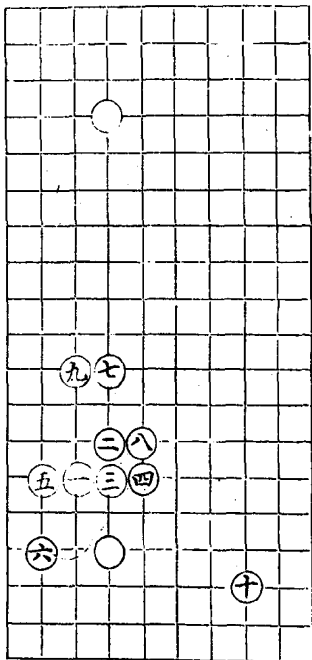
# 十一變

十一カ



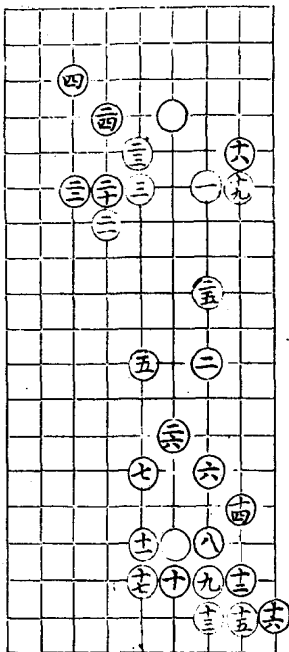
# 十二變

六七步



# 轉換邊

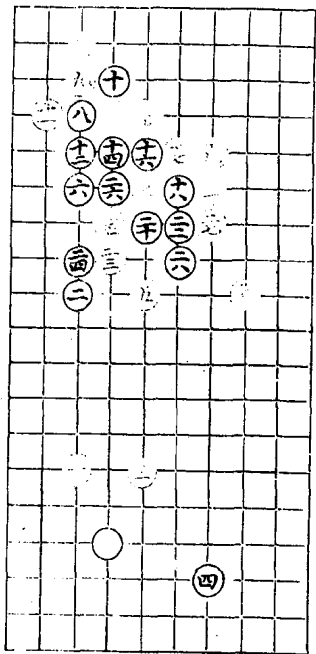
極新巧惟對手者識之



奕敵 起手

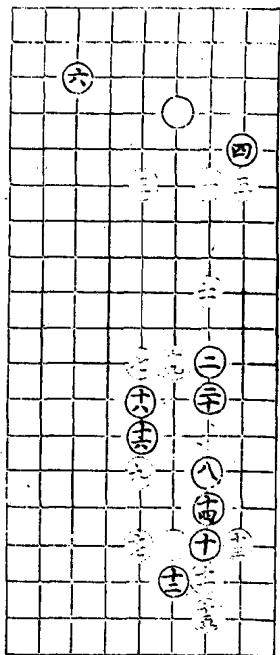
# 二變

一及二十三步  
二十一及九步



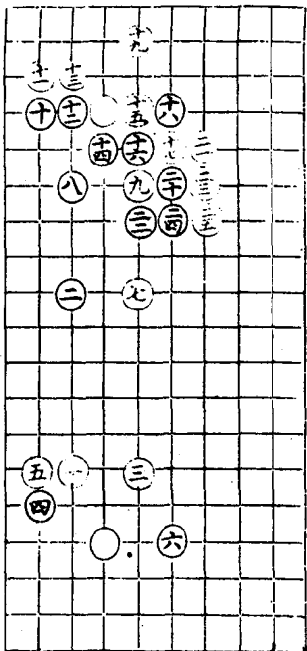
# 三變

六不衝皆先出鈔



# 四變

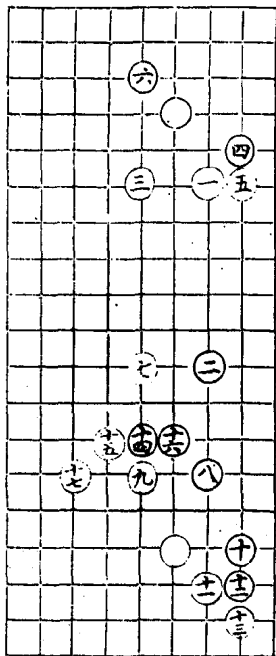
十九二十五





# 五變

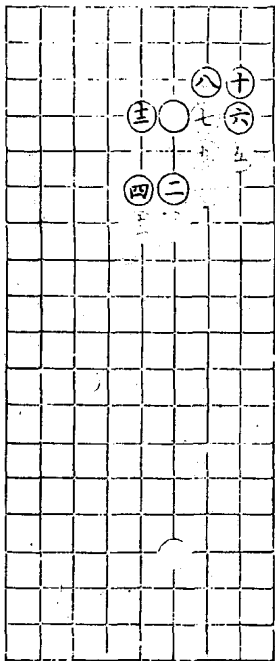
兩分  
十六好





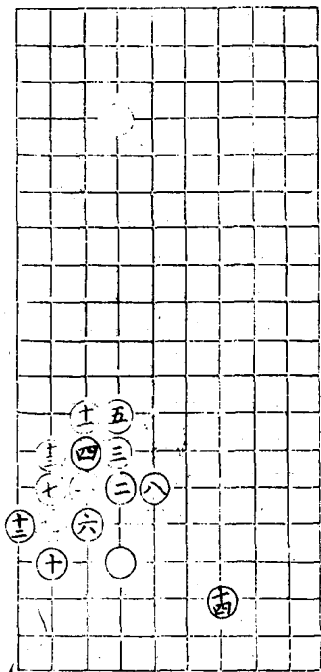
# 簡蓋勢

十二步  
官子受子得力對策不宜拚死逃方向取  
有勢



# 一一變

丘套去八妙  
此勢五着在四五則成溪三子起角

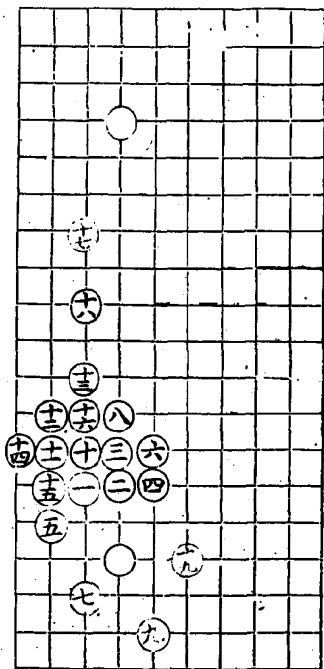




奕菽 起手

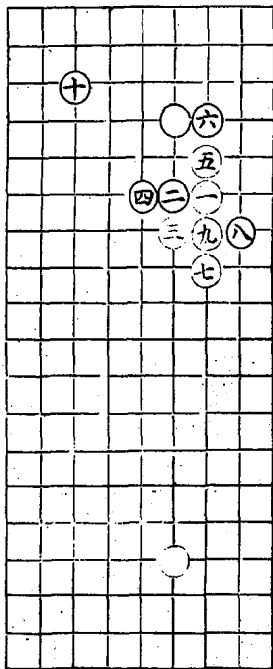
# 四變

印秋仙定光圖



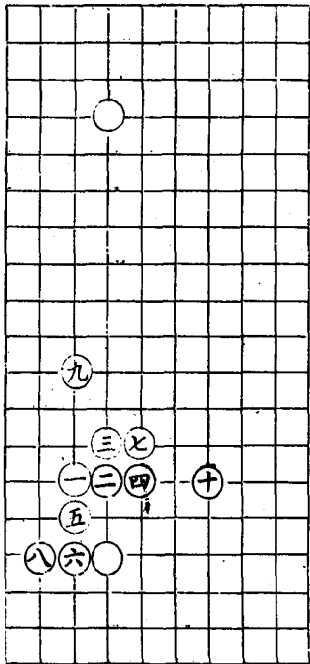
# 五變

八妙



# 六變

八直立妙



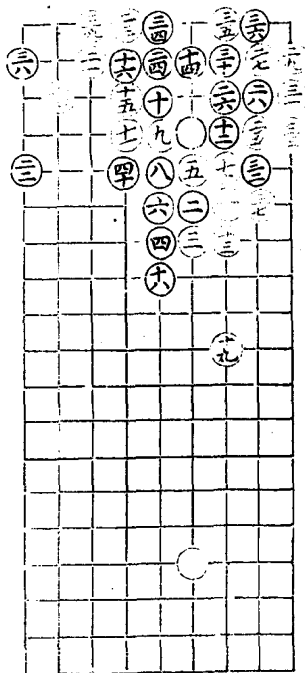






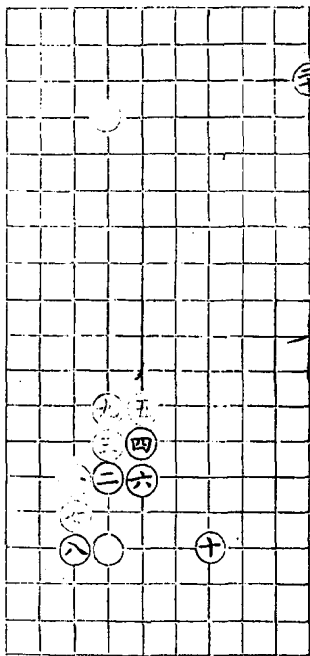
# 三變

諸譜止于二十九定局因其意而演之至于四十着復勝遂增而錄之

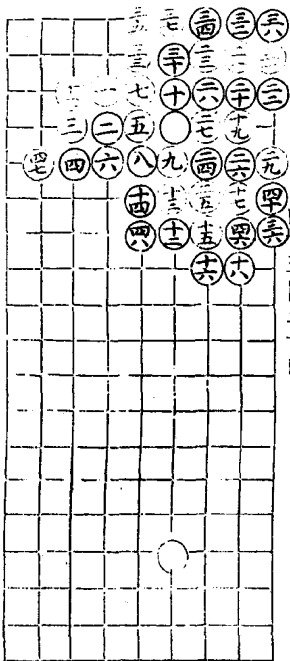


四變

百分



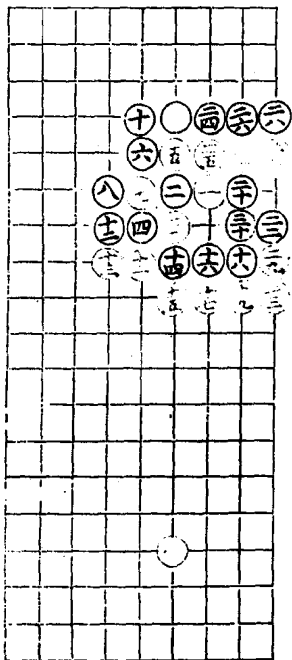
# 五變



出第奕搜玄 十八二十俱好 三十九同二十一  
 四十一同二十三 四十二同三十一  
 四十三同二十三 四十四同二十六  
 四十五同二十四



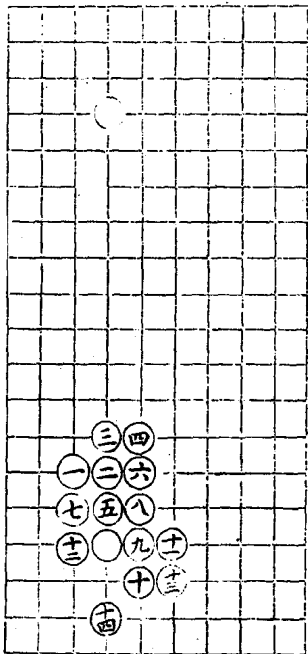
# 七變



七變之變非取則失勢此變二十三石連成兩  
 分沙可也矣

# 八變

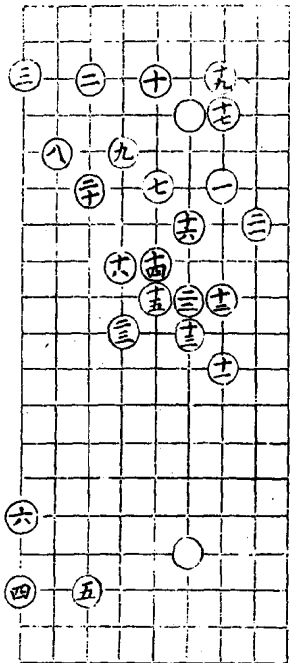
舊譜皆因貪乳擊及失已成之角  
必十四奉則兩分





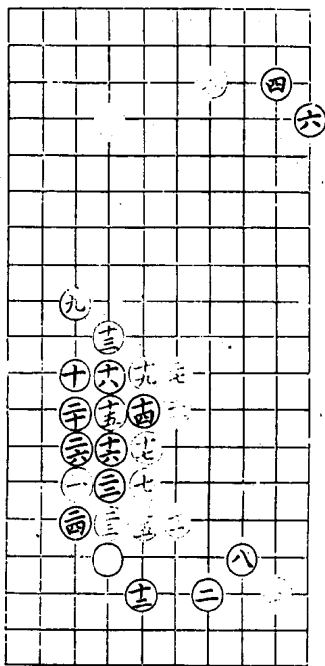
# 守城

十五好  
出奕微



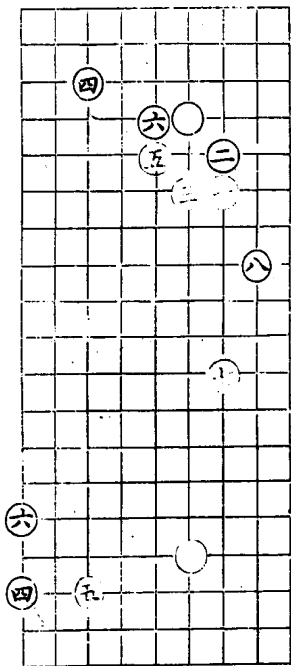
一一變

十六子



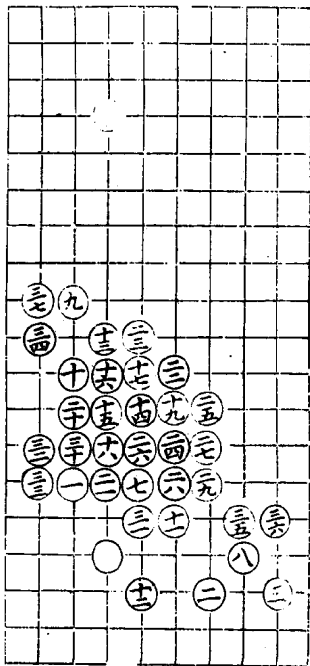
# 三變

五  
六  
研



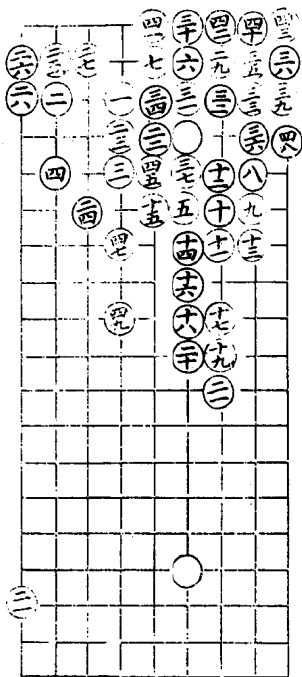
# 四變

三十二好



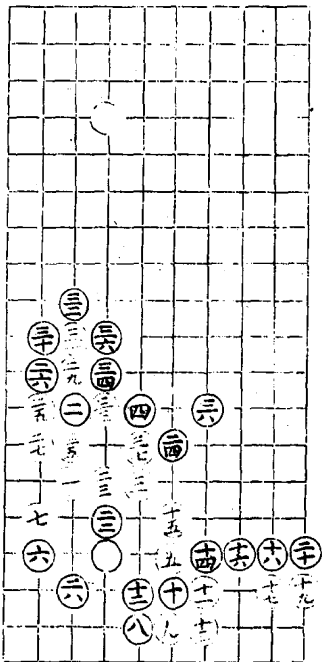
# 起好手

四十四同三十一 四十六同三十八  
 諸譜非失外勢則內受劫蓋緣十三着  
 之總子也



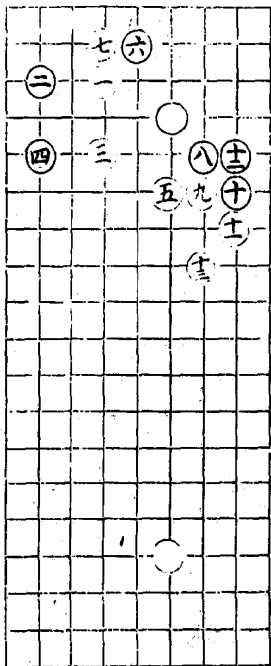
# 二變

二十八着內自守二十着外由州變了二十着



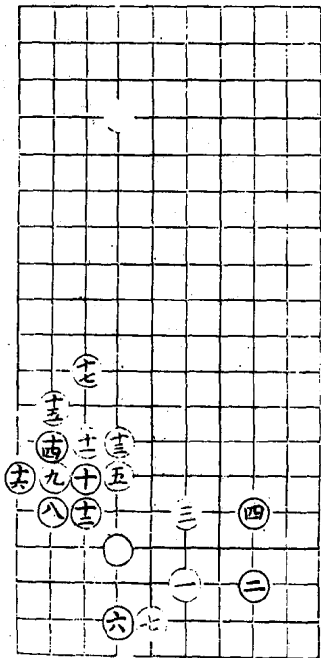
三變

六妙



四變

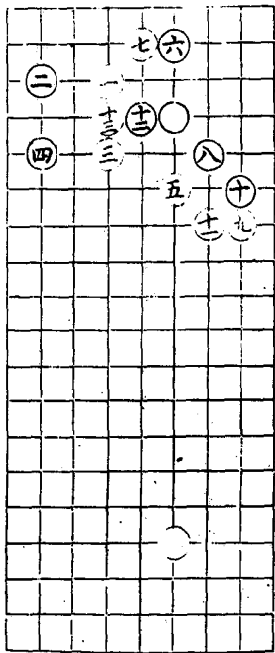
十二





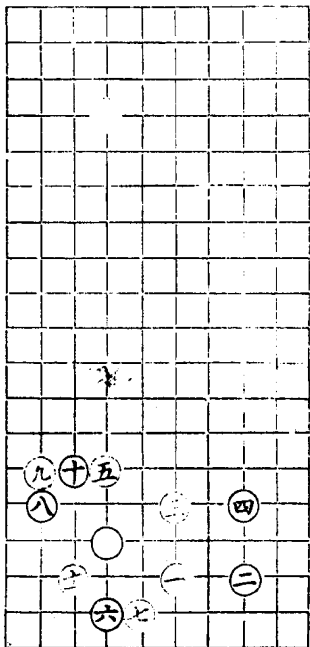
# 五變

六步

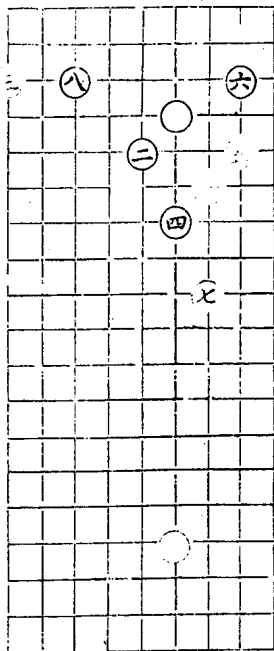


# 六變

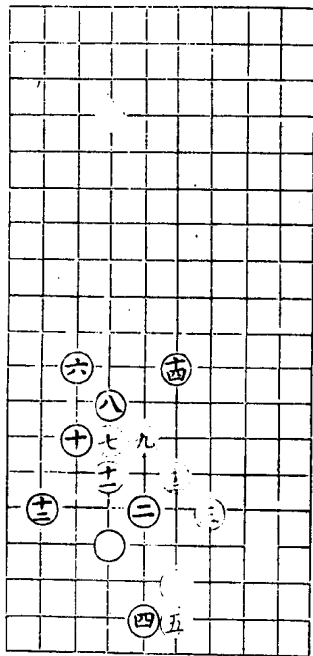
敵起手



# 七變

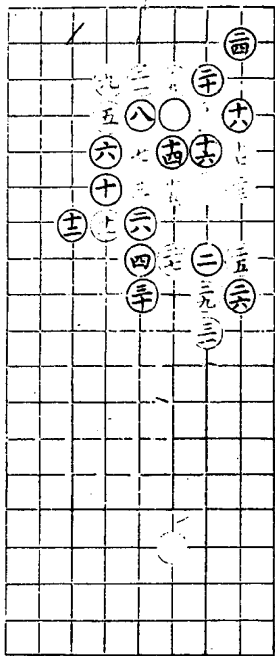


# 八變



奕  
數  
起  
手

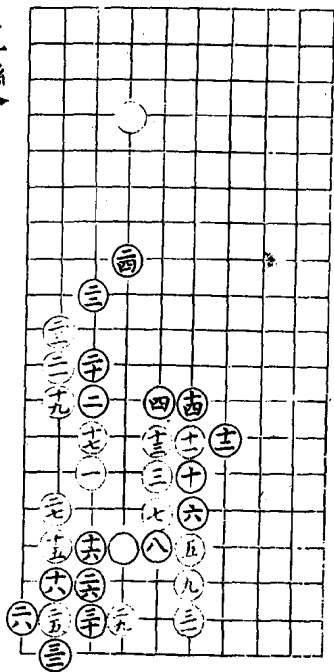
# 大角圖



此圖係由... 二十... 妙... 其... 分... 廣... 百... 四...

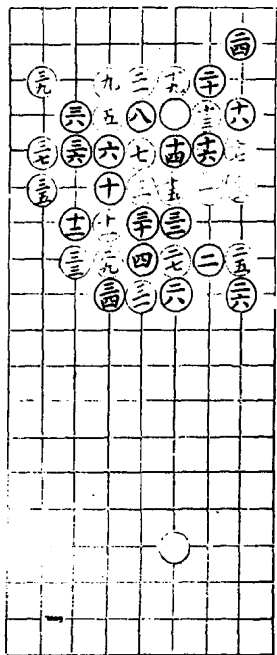
# 一一變

二十五妙

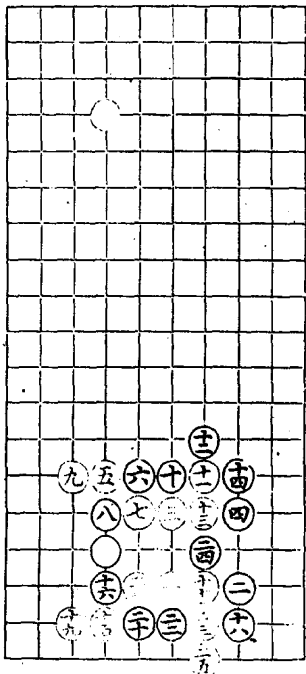


# 三變

此局與前局互看

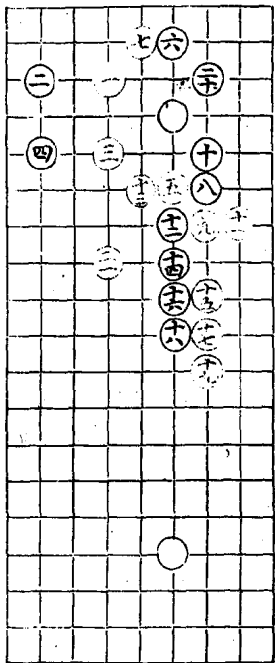


# 四變





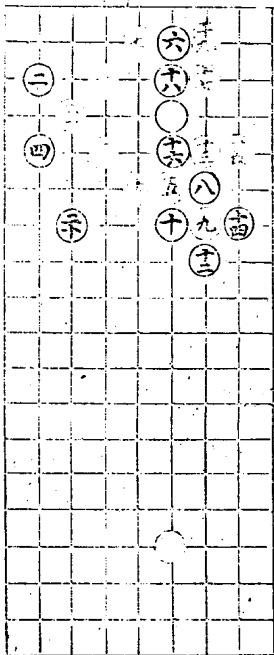
小角圖





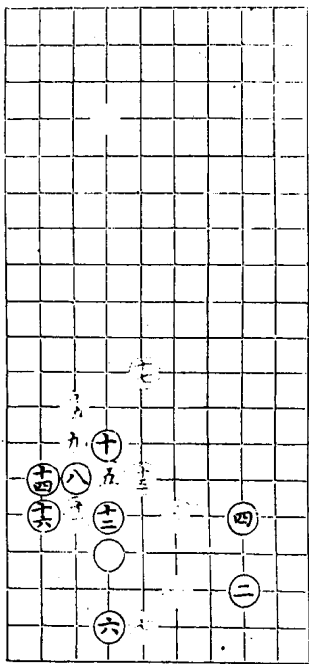
# 三變

十一  
出選清錄



# 四變

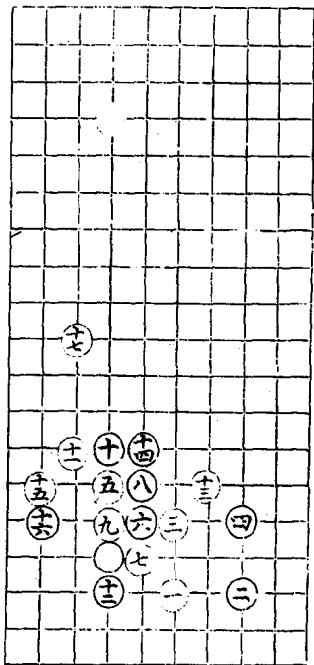
十二步





# 二變

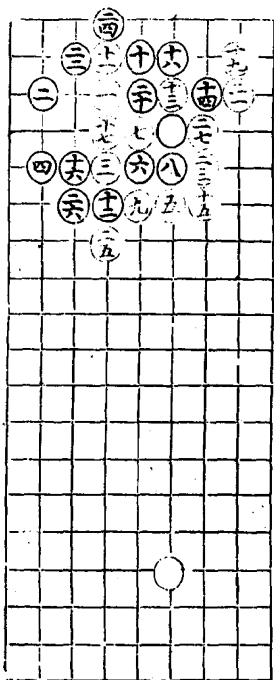
十五步



# 三變

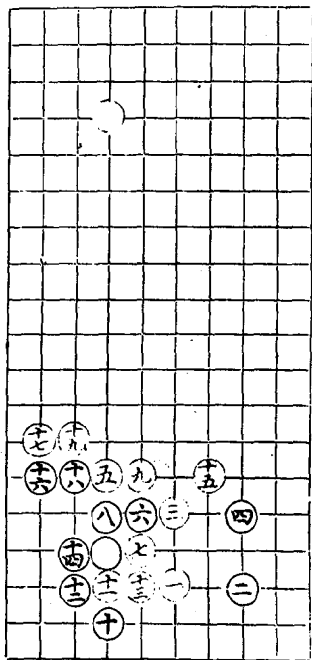
十九妙極

即入神變惟此變至京下法



# 四變

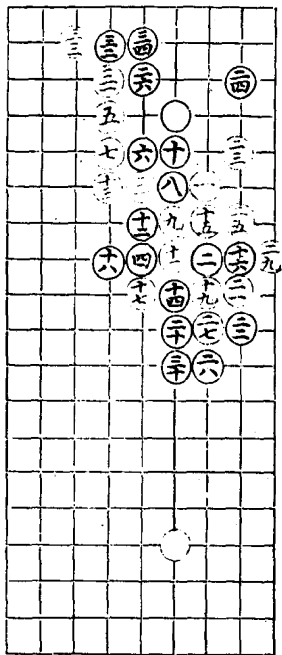
四分





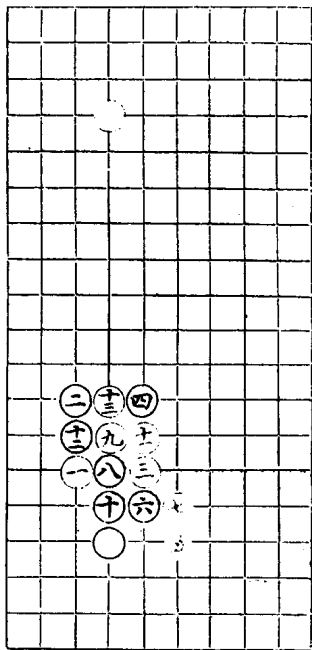
# 立仁角

諸清錄之總不若此變而分此二十四  
退而自守何其遠也

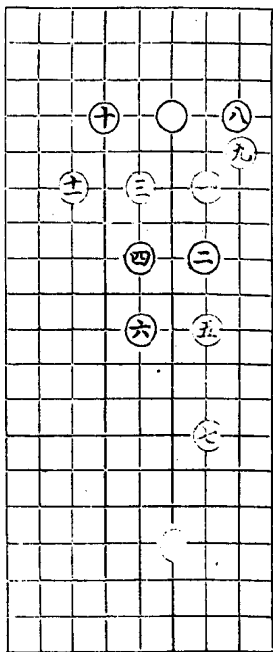


# 二變

若如  
為內取外彼此兩分不必執一

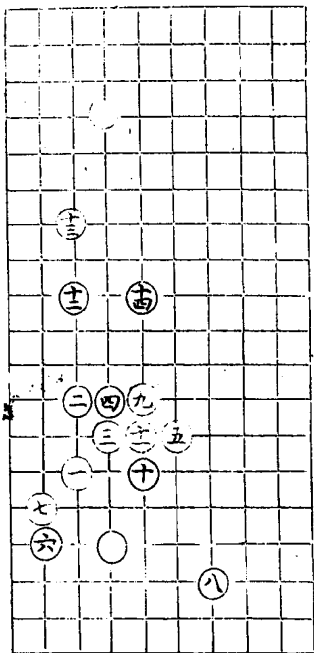


# 三變



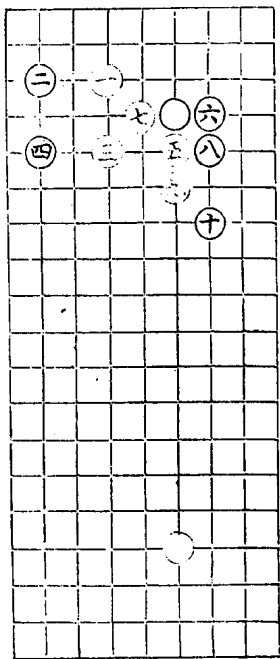
# 四變

三妙

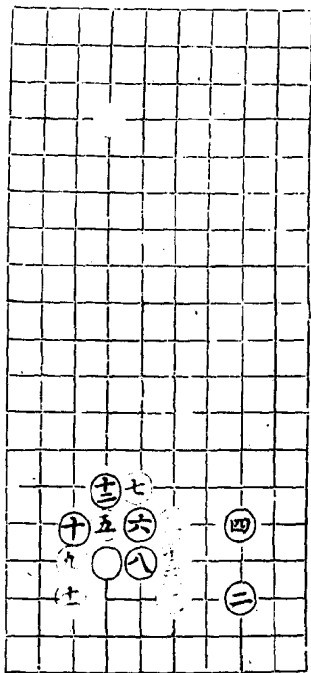


# 金井欄

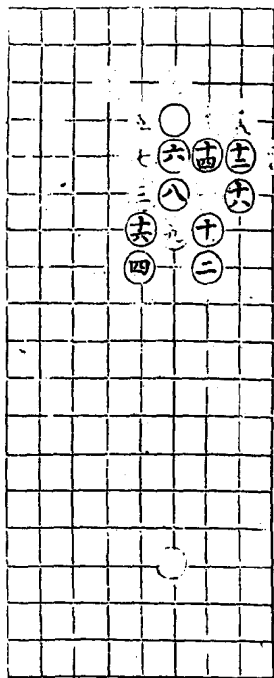
六妙  
兩分可法



# 二變

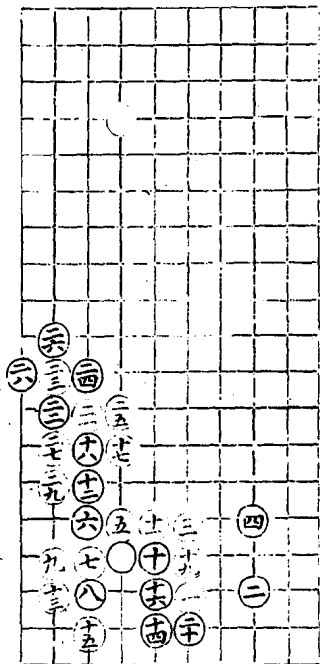


三變



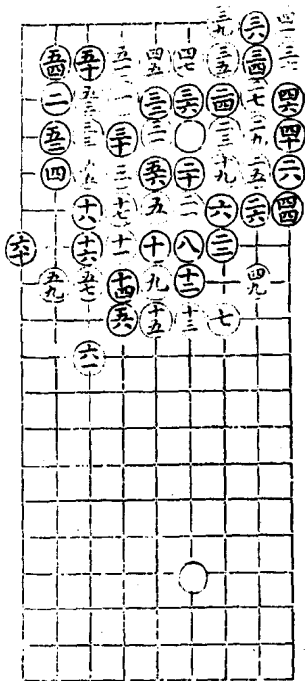
# 四變

此步有存可謂入城





# 釣竿

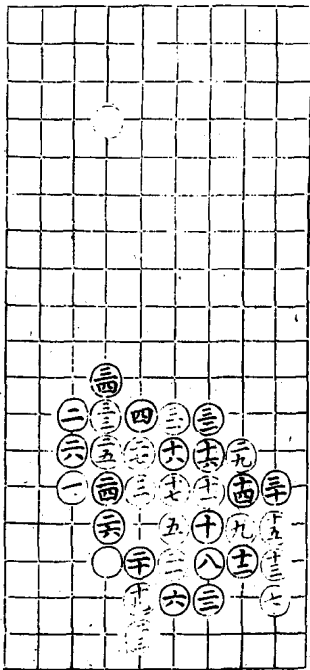


四十二及四十八同三十四 四十三同三十八  
 惟此是錄此變竟正逆出可以開入機致是  
 為妙

奕後 起手

# 一二變

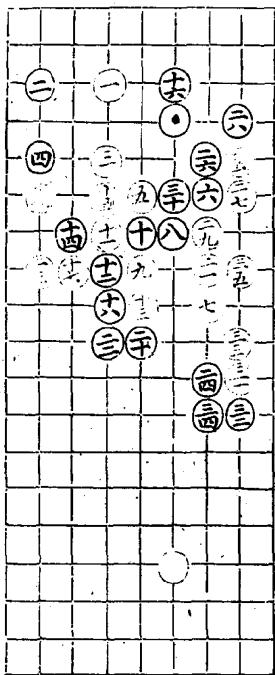
觀此變便識設委



# 三變

二道書錄  
二十六步極

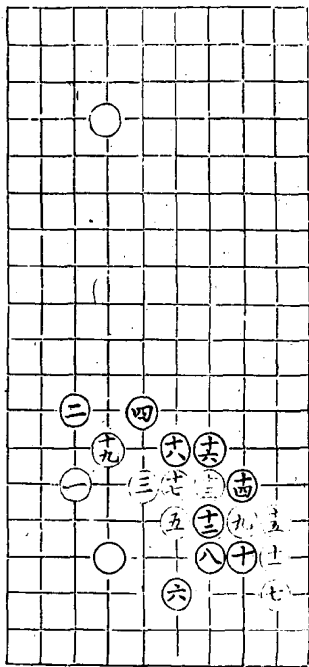
二十五妙



奕數 起手

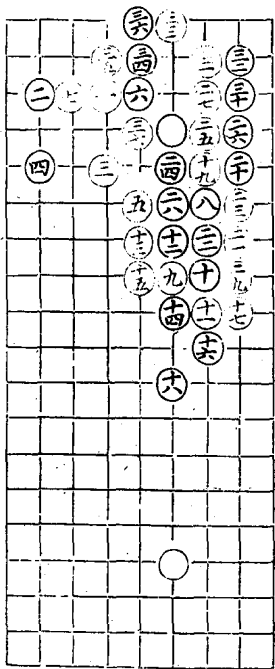
# 四變

一九有戲以爲符勢則黑勢破矣



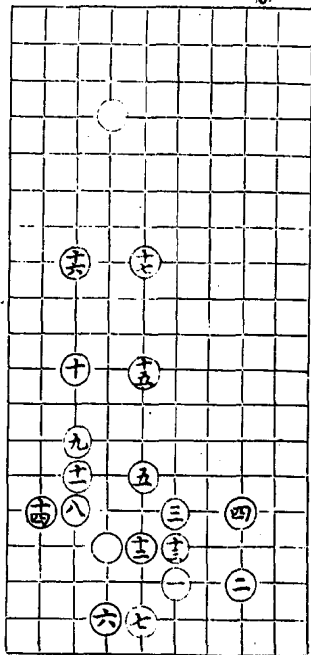
# 五變

此勢十九先行在十二反不能立下以成下  
 行墜取此變便知巧勝當以行為底



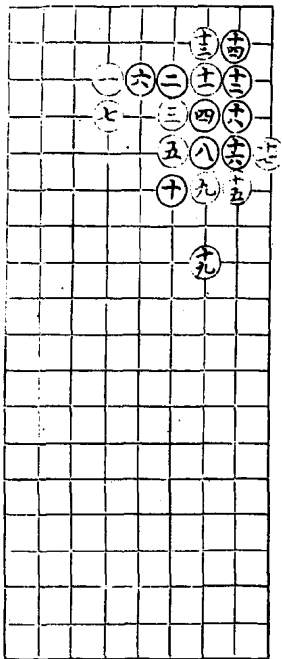
# 六變

八步



# 空花角

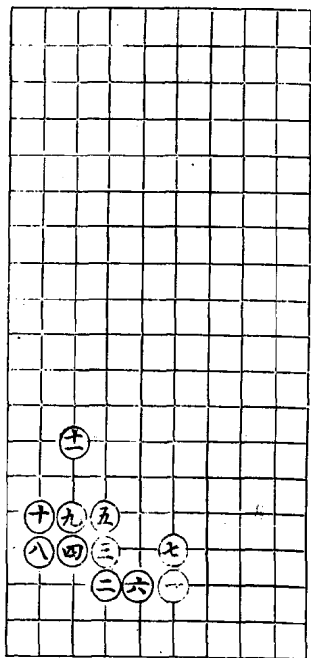
十九好



奕戲 起手

# 一二變

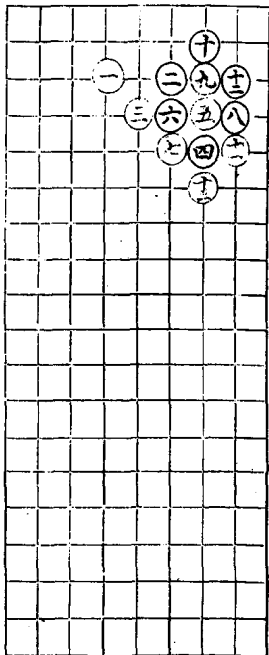
八好 九好



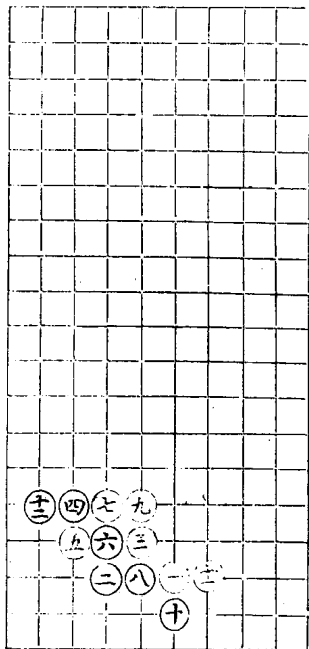


三變

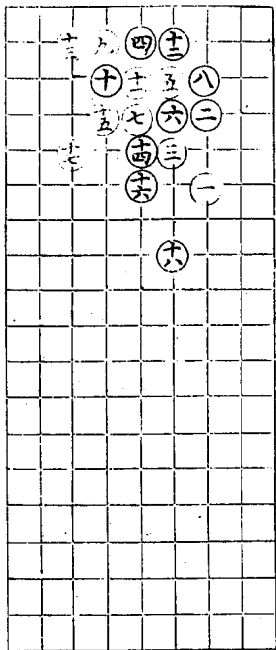
九好



# 四變

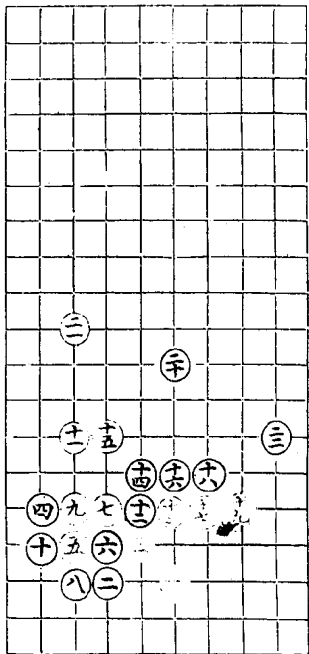


五變



# 六變

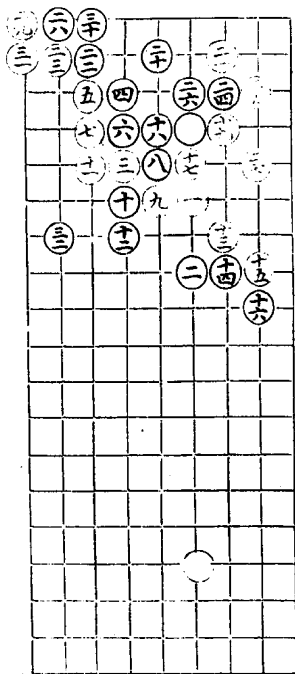
十一好



# 六四類

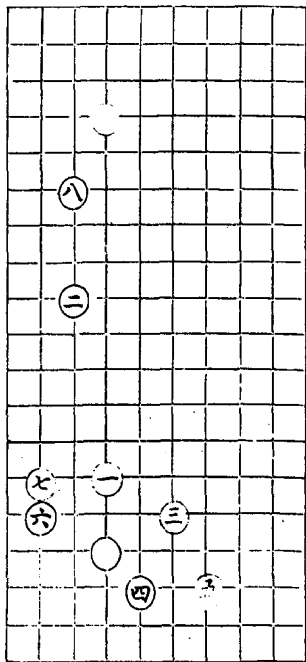
## 平角圖

惟二十首活餘着俱難



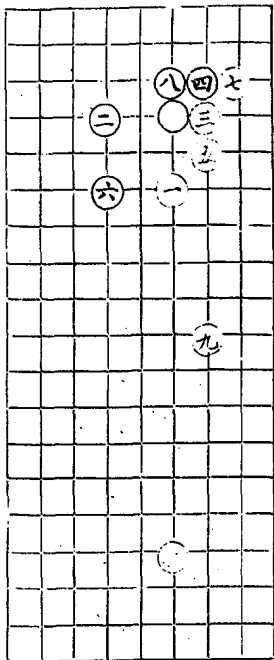
一一變

四妙



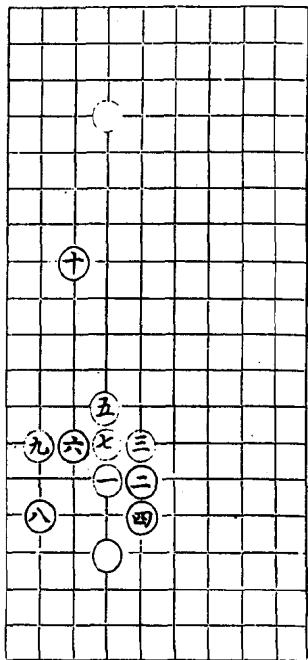
# 三變

六步



# 四變

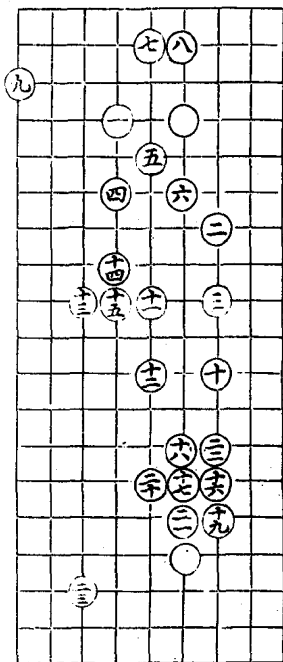
八步





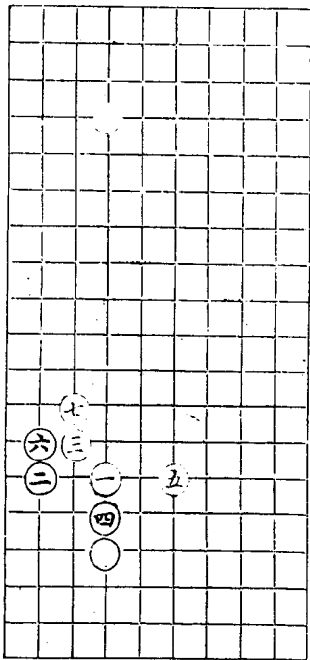
# 飛關角

四



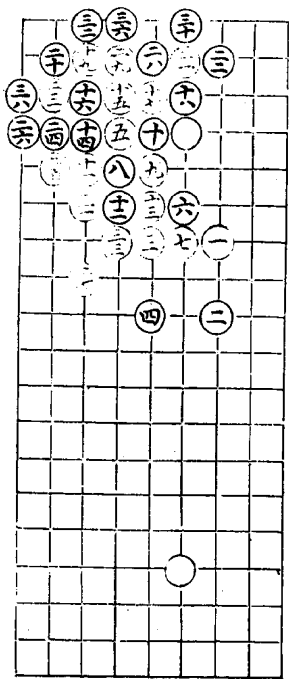
# 破象眼

漢魏起手



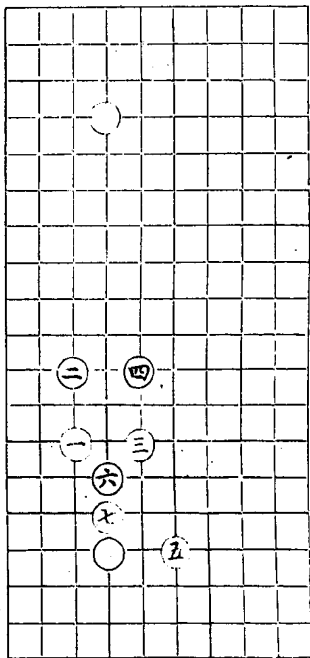
七三類

斜飛



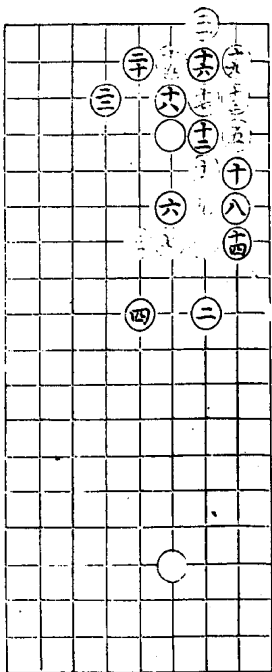
三十七期八・三十五期十二

# 二變



出城に着手

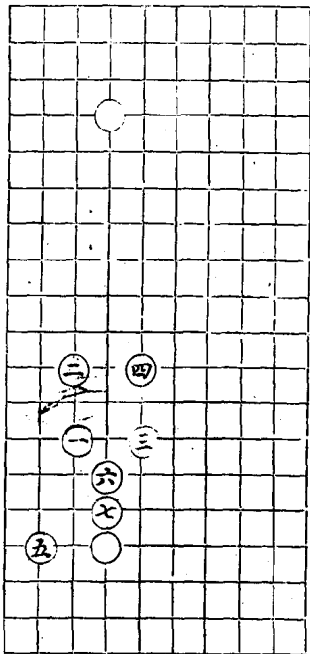
# 三變



奕數 起手

# 四變

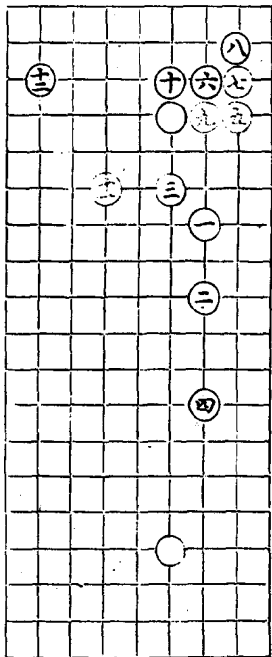
七



五十五

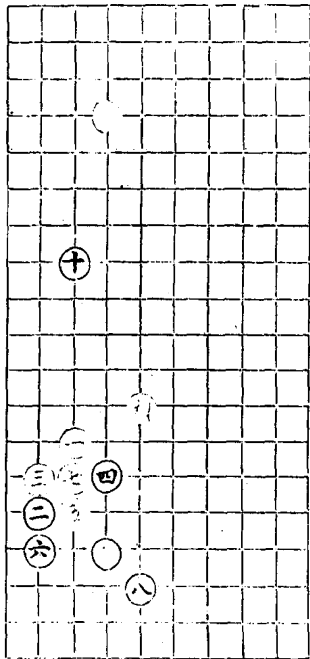
# 五變

三妙



# 六變

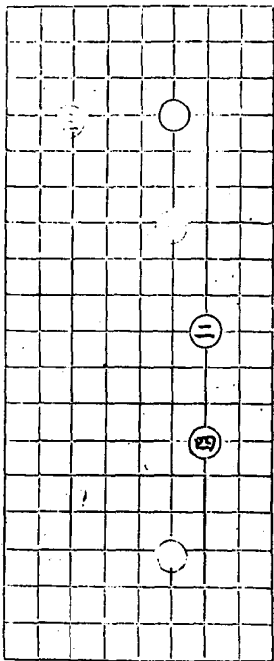
白





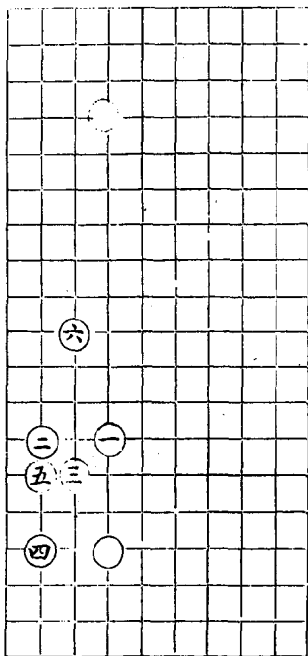
七四類

拆二



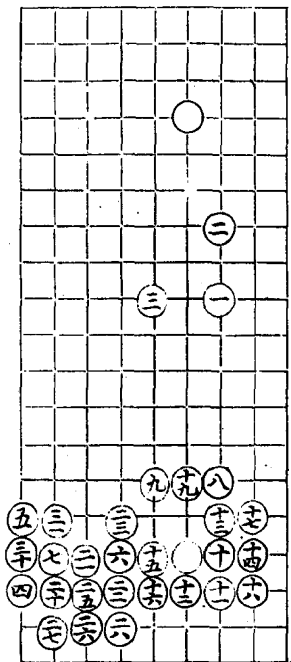
# 二變

二妙



# 九三類

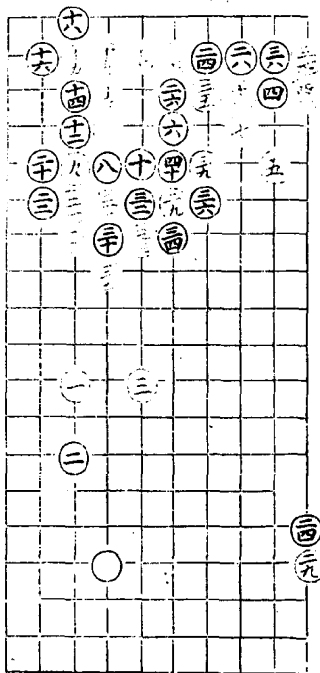
## 取勝邊



出奕教  
 四變着者精奇各有妙境至轉換處益見咽喉  
 非長善奕者不能其奧妙可知三五七奇思八  
 九健有力三十一先屈後伸之妙

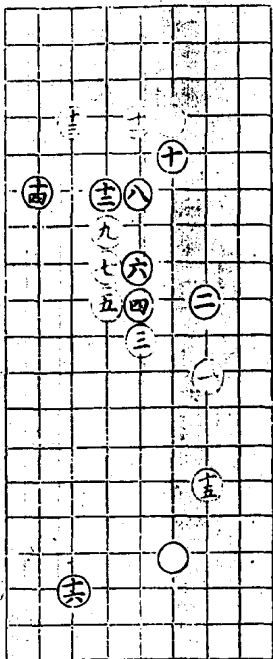
# 一一變

三五七有方量十一妙二十四好  
十九至四十二有心思



# 三變

出奕玄  
三飛妙九不入而外氣有意思

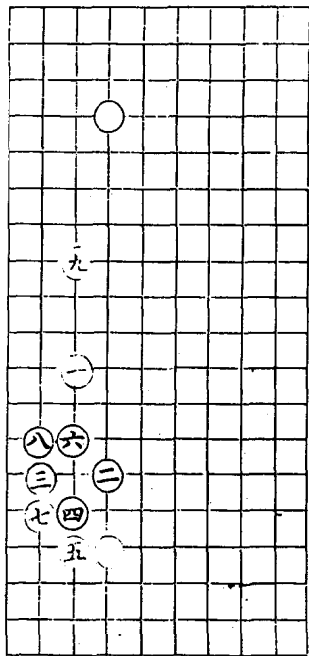


六  
十





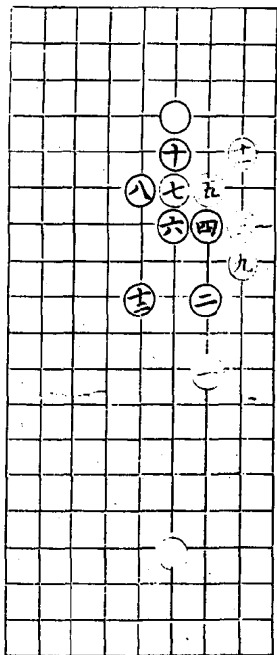
一二變



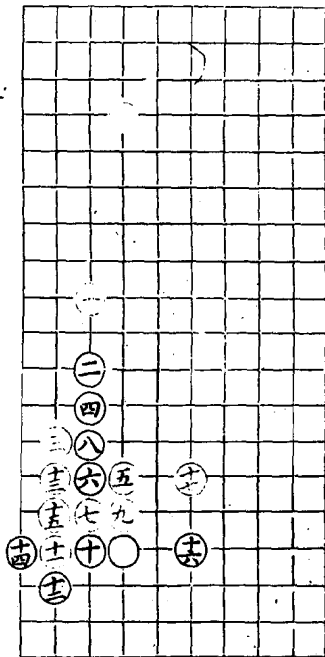


# 挑戰

三劫

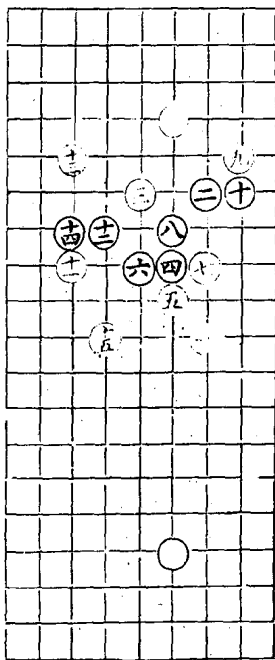


二變



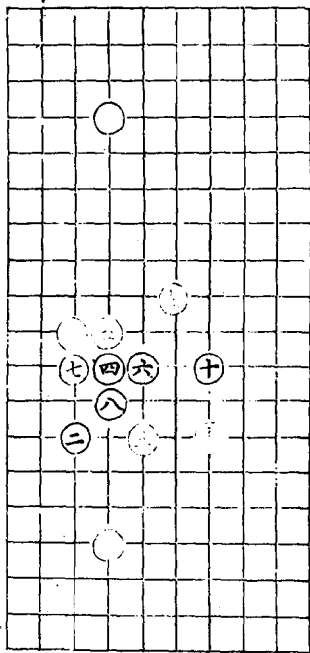
# 十三類

## 一變



子入於本基第對局要因投早失勢  
今改之虛單使其中促宜法

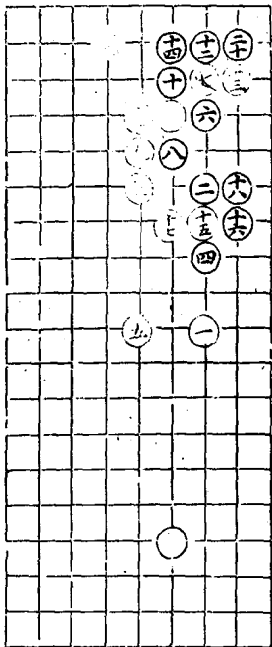
# 二變



此圖對棋局意于收法其尖宜共  
本外可及置取勢也

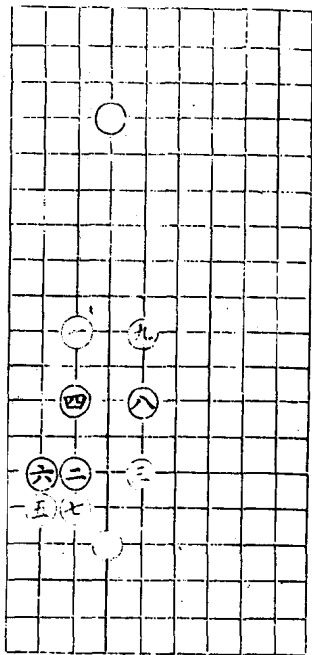
三變

十五妙

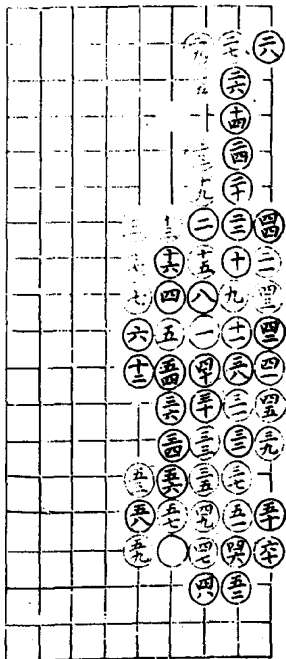


# 四變

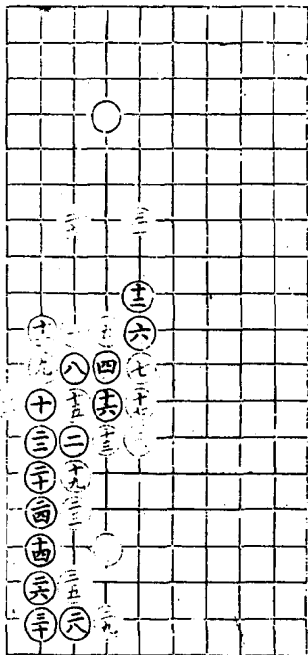
七



# 玉屏風



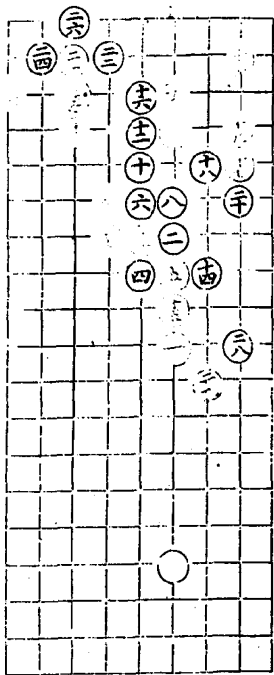
# 二變





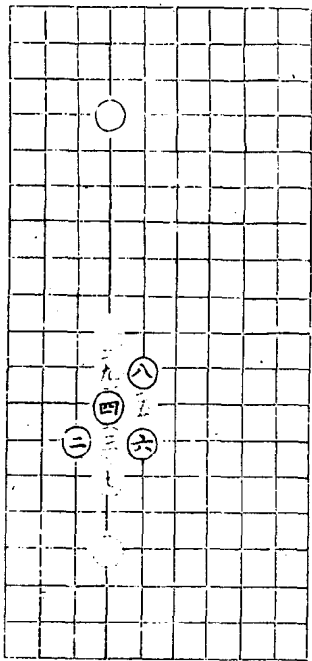
# 十四類

## 玉欄杆



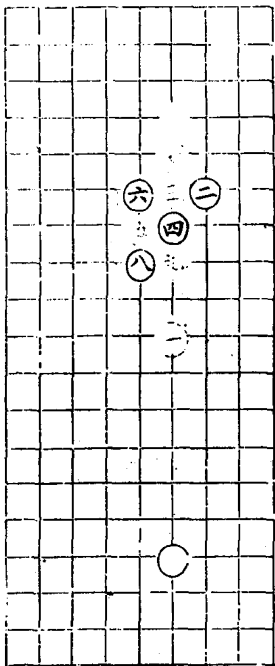
奕鼓 起手

一一變

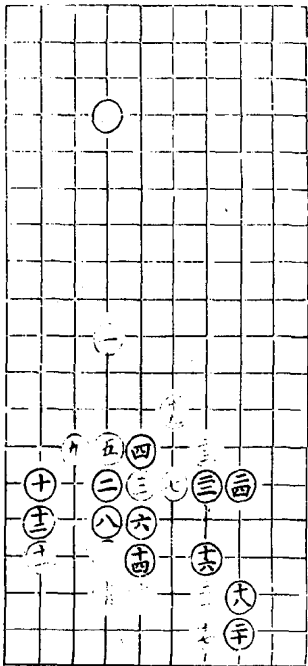


六十五

三變



四變

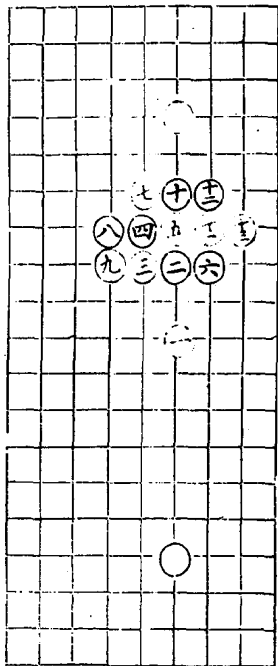


奕藪起手

六六

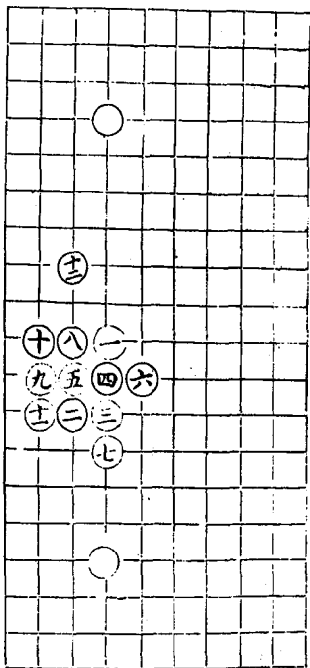
# 五變

九



# 六變

七妙



奕  
韋  
起  
手

六  
二  
七